



Honorable Bill Cervenik, Mayor
Ex-Officio Director of Public Safety
City of Euclid, Ohio

President and Members of Council
City of Euclid, Ohio

It is my pleasure to forward herewith
the monthly report of the Police Department for
AUGUST 2015

Respectfully submitted,

A handwritten signature in blue ink that reads 'Thomas M. Brickman'. The signature is written in a cursive style.

Thomas Brickman
Chief of Police

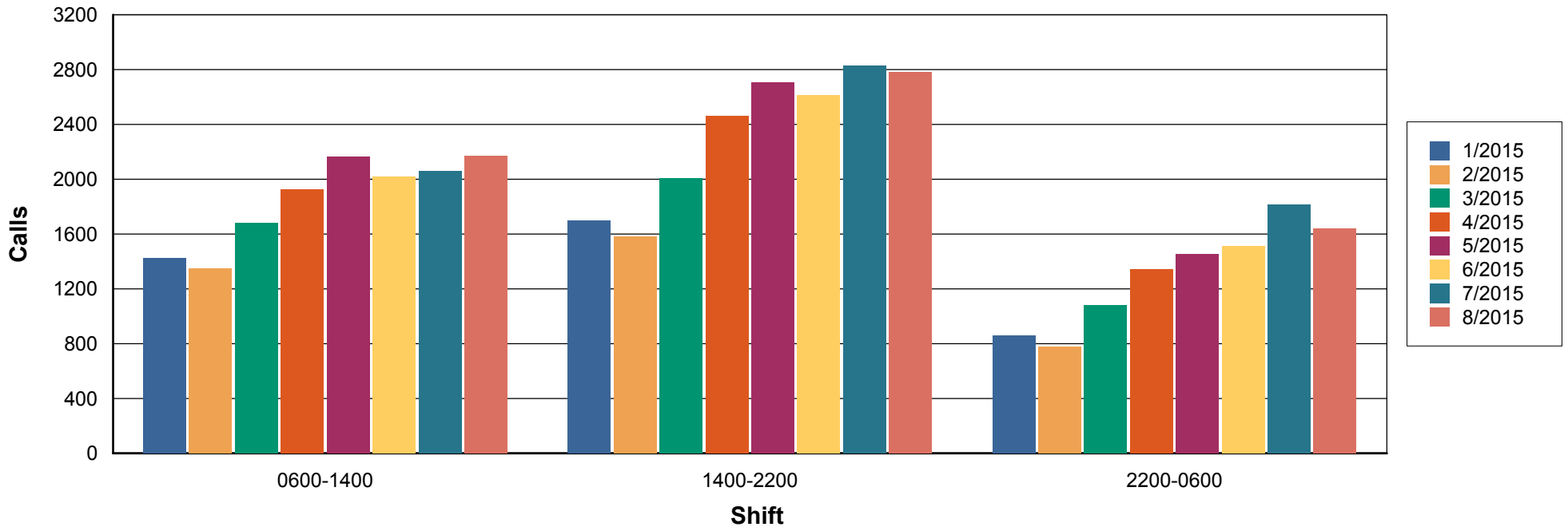
CHAGRIN VALLEY DISPATCH

Euclid Police Department CALLS RECEIVED SUMMARY *by Shift / Month / Year*

Query Dates: 1/1/2015 and 8/31/2015

Calls Received by Month and Shift

For 2015



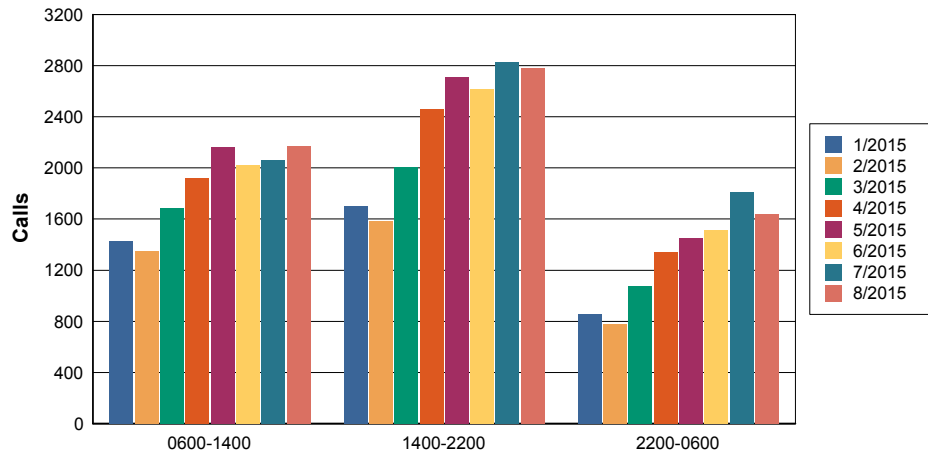
Calls Received by Month and Shift

| | Total | | 0600-1400 | | 1400-2200 | | 2200-0600 | |
|---------------|--------|------|-----------|-----|-----------|-----|-----------|-----|
| Total | 43,948 | 100% | 14,795 | 34% | 18,680 | 43% | 10,473 | 24% |
| 1/2015 | 3,984 | 100% | 1,425 | 36% | 1,699 | 43% | 860 | 22% |
| 2/2015 | 3,709 | 100% | 1,349 | 36% | 1,582 | 43% | 778 | 21% |

| | Total | | 0600-1400 | | 1400-2200 | | 2200-0600 | |
|---------------|--------------|------|------------------|-----|------------------|-----|------------------|-----|
| 3/2015 | 4,770 | 100% | 1,684 | 35% | 2,008 | 42% | 1,078 | 23% |
| 4/2015 | 5,726 | 100% | 1,923 | 34% | 2,463 | 43% | 1,340 | 23% |
| 5/2015 | 6,325 | 100% | 2,163 | 34% | 2,709 | 43% | 1,453 | 23% |
| 6/2015 | 6,147 | 100% | 2,019 | 33% | 2,614 | 43% | 1,514 | 25% |
| 7/2015 | 6,699 | 100% | 2,061 | 31% | 2,826 | 42% | 1,812 | 27% |
| 8/2015 | 6,588 | 100% | 2,171 | 33% | 2,779 | 42% | 1,638 | 25% |

Calls Received by Day of the Week and Shift

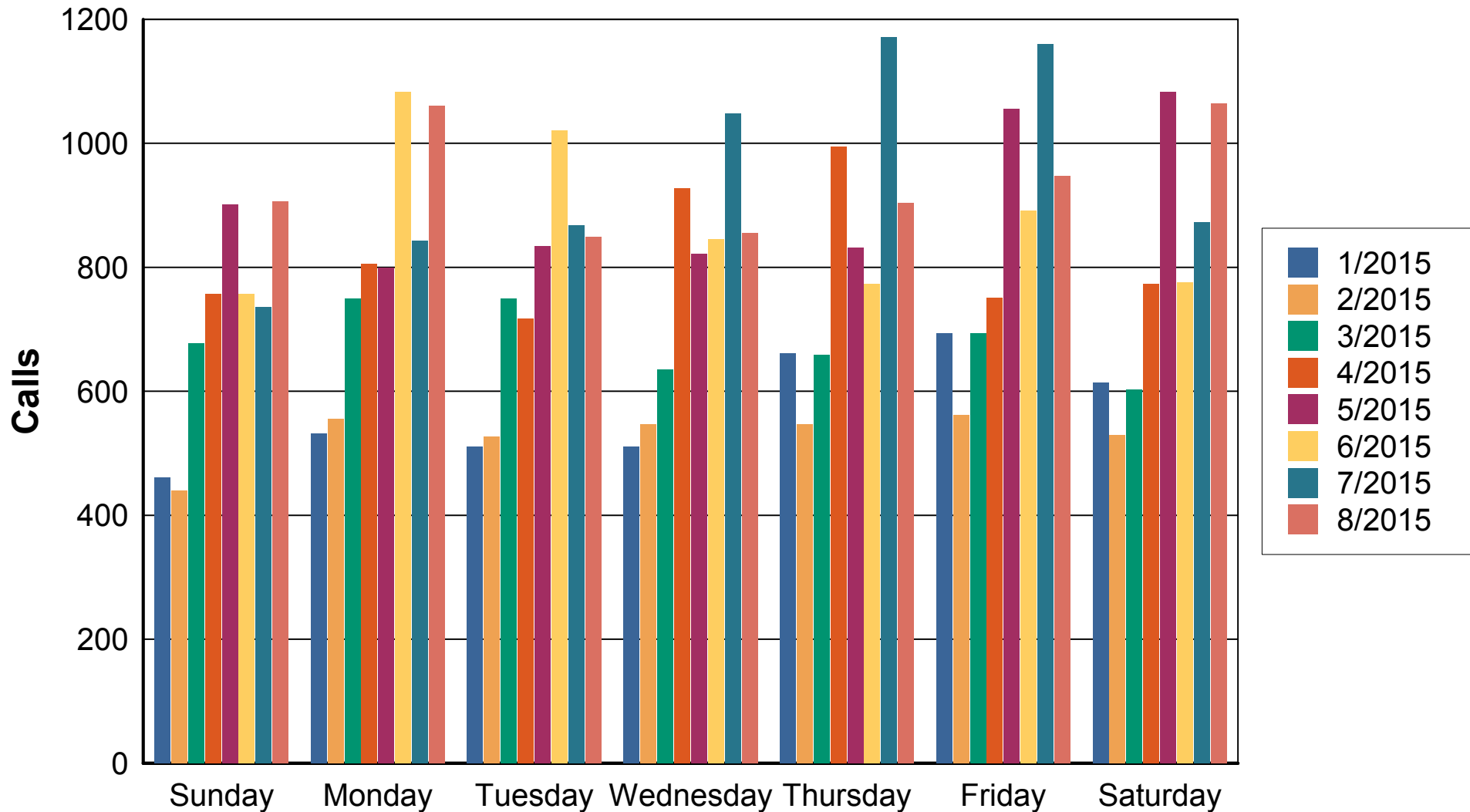
For 2015



Calls Received by Day of the Week and Shift

| | Total | | 0600-1400 | | 1400-2200 | | 2200-0600 | |
|---------------|-------|------|-----------|------|-----------|------|-----------|------|
| 1/2015 | 3,984 | 100% | 1,425 | 100% | 1,699 | 100% | 860 | 100% |
| 2/2015 | 3,709 | 100% | 1,349 | 100% | 1,582 | 100% | 778 | 100% |
| 3/2015 | 4,770 | 100% | 1,684 | 100% | 2,008 | 100% | 1,078 | 100% |
| 4/2015 | 5,726 | 100% | 1,923 | 100% | 2,463 | 100% | 1,340 | 100% |
| 5/2015 | 6,325 | 100% | 2,163 | 100% | 2,709 | 100% | 1,453 | 100% |
| 6/2015 | 6,147 | 100% | 2,019 | 100% | 2,614 | 100% | 1,514 | 100% |
| 7/2015 | 6,699 | 100% | 2,061 | 100% | 2,826 | 100% | 1,812 | 100% |
| 8/2015 | 6,588 | 100% | 2,171 | 100% | 2,779 | 100% | 1,638 | 100% |

Calls Received by Day of Week and Month



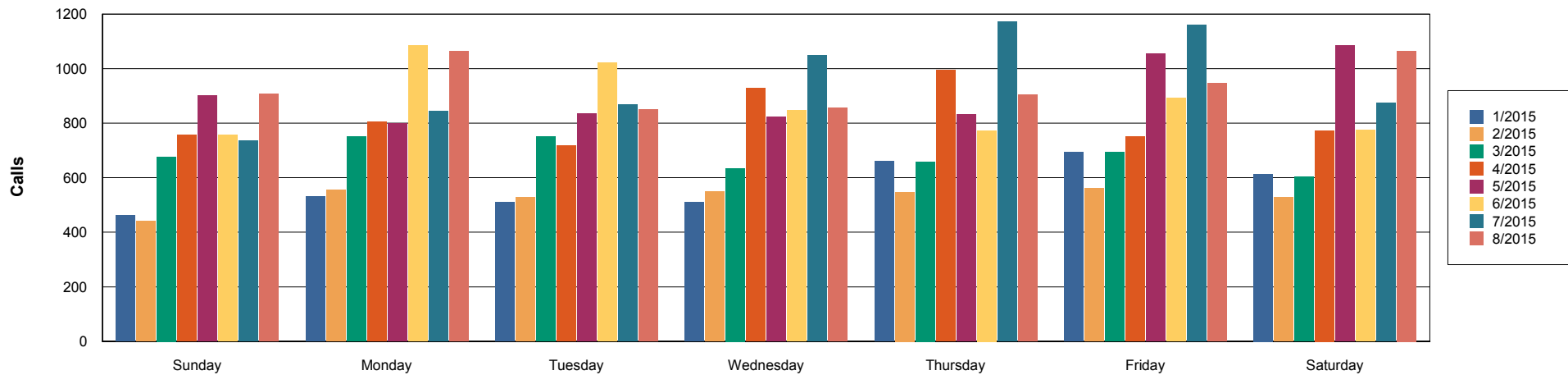
Calls Received by Month, Shift, and Day of Week

| | | Total | | Sunday | | Monday | | Tuesday | | Wednesday | | Thursday | | Friday | | Saturday | |
|---------------|------------------|--------|------|--------|-----|--------|-----|---------|-----|-----------|-----|----------|-----|--------|-----|----------|-----|
| Total | | 43,931 | 100% | 5,634 | 13% | 6,427 | 15% | 6,076 | 14% | 6,190 | 14% | 6,540 | 15% | 6,752 | 15% | 6,313 | 14% |
| 1/2015 | Total | 3,982 | 100% | 461 | 12% | 532 | 13% | 511 | 13% | 510 | 13% | 661 | 17% | 693 | 17% | 614 | 15% |
| | 0600-1400 | 1,424 | 100% | 155 | 11% | 197 | 14% | 198 | 14% | 190 | 13% | 245 | 17% | 235 | 17% | 204 | 14% |
| | 1400-2200 | 1,699 | 100% | 182 | 11% | 224 | 13% | 226 | 13% | 218 | 13% | 275 | 16% | 317 | 19% | 257 | 15% |
| | 2200-0600 | 859 | 100% | 124 | 14% | 111 | 13% | 87 | 10% | 102 | 12% | 141 | 16% | 141 | 16% | 153 | 18% |
| 2/2015 | Total | 3,707 | 100% | 440 | 12% | 555 | 15% | 527 | 14% | 547 | 15% | 547 | 15% | 562 | 15% | 529 | 14% |
| | 0600-1400 | 1,348 | 100% | 138 | 10% | 229 | 17% | 199 | 15% | 197 | 15% | 198 | 15% | 209 | 16% | 178 | 13% |
| | 1400-2200 | 1,582 | 100% | 167 | 11% | 241 | 15% | 212 | 13% | 246 | 16% | 236 | 15% | 242 | 15% | 238 | 15% |
| | 2200-0600 | 777 | 100% | 135 | 17% | 85 | 11% | 116 | 15% | 104 | 13% | 113 | 15% | 111 | 14% | 113 | 15% |
| 3/2015 | Total | 4,764 | 100% | 677 | 14% | 749 | 16% | 750 | 16% | 635 | 13% | 659 | 14% | 693 | 15% | 602 | 13% |
| | 0600-1400 | 1,682 | 100% | 203 | 12% | 295 | 18% | 270 | 16% | 219 | 13% | 235 | 14% | 268 | 16% | 193 | 11% |
| | 1400-2200 | 2,005 | 100% | 308 | 15% | 325 | 16% | 324 | 16% | 271 | 14% | 271 | 14% | 278 | 14% | 228 | 11% |
| | 2200-0600 | 1,077 | 100% | 166 | 15% | 129 | 12% | 156 | 14% | 145 | 13% | 153 | 14% | 147 | 14% | 181 | 17% |
| 4/2015 | Total | 5,725 | 100% | 757 | 13% | 805 | 14% | 717 | 13% | 928 | 16% | 994 | 17% | 751 | 13% | 773 | 14% |
| | 0600-1400 | 1,922 | 100% | 216 | 11% | 274 | 14% | 269 | 14% | 333 | 17% | 347 | 18% | 244 | 13% | 239 | 12% |
| | 1400-2200 | 2,463 | 100% | 298 | 12% | 362 | 15% | 303 | 12% | 407 | 17% | 434 | 18% | 331 | 13% | 328 | 13% |
| | 2200-0600 | 1,340 | 100% | 243 | 18% | 169 | 13% | 145 | 11% | 188 | 14% | 213 | 16% | 176 | 13% | 206 | 15% |
| 5/2015 | Total | 6,325 | 100% | 901 | 14% | 799 | 13% | 834 | 13% | 822 | 13% | 831 | 13% | 1,055 | 17% | 1,083 | 17% |
| | 0600-1400 | 2,163 | 100% | 256 | 12% | 275 | 13% | 318 | 15% | 311 | 14% | 305 | 14% | 344 | 16% | 354 | 16% |
| | 1400-2200 | 2,709 | 100% | 372 | 14% | 330 | 12% | 330 | 12% | 379 | 14% | 359 | 13% | 473 | 17% | 466 | 17% |
| | 2200-0600 | 1,453 | 100% | 273 | 19% | 194 | 13% | 186 | 13% | 132 | 9% | 167 | 11% | 238 | 16% | 263 | 18% |
| 6/2015 | Total | 6,144 | 100% | 757 | 12% | 1,083 | 18% | 1,020 | 17% | 845 | 14% | 773 | 13% | 891 | 14% | 775 | 13% |

| | | Total | | Sunday | | Monday | | Tuesday | | Wednesday | | Thursday | | Friday | | Saturday | |
|---------------|------------------|--------------|------|---------------|-----|---------------|-----|----------------|-----|------------------|-----|-----------------|-----|---------------|-----|-----------------|-----|
| 6/2015 | 0600-1400 | 2,017 | 100% | 216 | 11% | 372 | 18% | 349 | 17% | 294 | 15% | 254 | 13% | 308 | 15% | 224 | 11% |
| | 1400-2200 | 2,613 | 100% | 284 | 11% | 491 | 19% | 427 | 16% | 368 | 14% | 349 | 13% | 357 | 14% | 337 | 13% |
| | 2200-0600 | 1,514 | 100% | 257 | 17% | 220 | 15% | 244 | 16% | 183 | 12% | 170 | 11% | 226 | 15% | 214 | 14% |
| 7/2015 | Total | 6,698 | 100% | 735 | 11% | 843 | 13% | 868 | 13% | 1,048 | 16% | 1,171 | 17% | 1,160 | 17% | 873 | 13% |
| | 0600-1400 | 2,061 | 100% | 180 | 9% | 289 | 14% | 282 | 14% | 358 | 17% | 355 | 17% | 368 | 18% | 229 | 11% |
| | 1400-2200 | 2,826 | 100% | 299 | 11% | 375 | 13% | 375 | 13% | 438 | 15% | 511 | 18% | 478 | 17% | 350 | 12% |
| | 2200-0600 | 1,811 | 100% | 256 | 14% | 179 | 10% | 211 | 12% | 252 | 14% | 305 | 17% | 314 | 17% | 294 | 16% |
| 8/2015 | Total | 6,586 | 100% | 906 | 14% | 1,061 | 16% | 849 | 13% | 855 | 13% | 904 | 14% | 947 | 14% | 1,064 | 16% |
| | 0600-1400 | 2,171 | 100% | 243 | 11% | 360 | 17% | 340 | 16% | 306 | 14% | 307 | 14% | 302 | 14% | 313 | 14% |
| | 1400-2200 | 2,778 | 100% | 368 | 13% | 482 | 17% | 337 | 12% | 370 | 13% | 398 | 14% | 414 | 15% | 409 | 15% |
| | 2200-0600 | 1,637 | 100% | 295 | 18% | 219 | 13% | 172 | 11% | 179 | 11% | 199 | 12% | 231 | 14% | 342 | 21% |

Calls Received by Day of Week

For 2015



Calls Received by Year, Hour, and Day of Week

| | | Total | Sunday | Monday | Tuesday | Wednesday | Thursday | Friday | Saturday |
|---------------|--------------|------------|---------|---------|---------|-----------|----------|---------|----------|
| 1/2015 | Total | 3,984 100% | 462 12% | 532 13% | 511 13% | 511 13% | 661 17% | 693 17% | 614 15% |
| | 0000 | 120 100% | 22 18% | 15 13% | 11 9% | 11 9% | 31 26% | 14 12% | 16 13% |
| | 0100 | 110 100% | 21 19% | 16 15% | 5 5% | 12 11% | 19 17% | 15 14% | 22 20% |
| | 0200 | 122 100% | 24 20% | 9 7% | 12 10% | 14 11% | 16 13% | 23 19% | 24 20% |
| | 0300 | 91 100% | 13 14% | 8 9% | 6 7% | 8 9% | 22 24% | 19 21% | 15 16% |
| | 0400 | 83 100% | 10 12% | 11 13% | 11 13% | 8 10% | 14 17% | 17 20% | 12 14% |
| | 0500 | 70 100% | 7 10% | 10 14% | 8 11% | 10 14% | 9 13% | 14 20% | 12 17% |
| | 0600 | 64 100% | 6 9% | 12 19% | 13 20% | 4 6% | 12 19% | 9 14% | 8 13% |
| | 0700 | 91 100% | 7 8% | 16 18% | 21 23% | 19 21% | 11 12% | 10 11% | 7 8% |
| | 0800 | 174 100% | 16 9% | 24 14% | 26 15% | 30 17% | 24 14% | 35 20% | 19 11% |
| | 0900 | 223 100% | 23 10% | 21 9% | 24 11% | 33 15% | 38 17% | 50 22% | 34 15% |
| | 1000 | 203 100% | 24 12% | 26 13% | 26 13% | 23 11% | 44 22% | 25 12% | 35 17% |
| | 1100 | 209 100% | 23 11% | 36 17% | 25 12% | 24 11% | 31 15% | 33 16% | 37 18% |
| | 1200 | 237 100% | 22 9% | 36 15% | 44 19% | 26 11% | 36 15% | 39 16% | 34 14% |
| | 1300 | 223 100% | 34 15% | 26 12% | 19 9% | 31 14% | 49 22% | 34 15% | 30 13% |
| | 1400 | 214 100% | 14 7% | 31 14% | 24 11% | 32 15% | 36 17% | 46 21% | 31 14% |
| | 1500 | 216 100% | 22 10% | 27 13% | 34 16% | 21 10% | 39 18% | 37 17% | 36 17% |
| | 1600 | 218 100% | 19 9% | 39 18% | 35 16% | 22 10% | 34 16% | 37 17% | 32 15% |
| | 1700 | 250 100% | 34 14% | 38 15% | 27 11% | 29 12% | 38 15% | 44 18% | 40 16% |
| | 1800 | 232 100% | 26 11% | 23 10% | 38 16% | 28 12% | 41 18% | 39 17% | 37 16% |
| 1900 | 182 100% | 17 9% | 20 11% | 21 12% | 29 16% | 33 18% | 38 21% | 24 13% | |
| 2000 | 196 100% | 31 16% | 23 12% | 21 11% | 34 17% | 21 11% | 41 21% | 25 13% | |
| 2100 | 191 100% | 19 10% | 23 12% | 26 14% | 23 12% | 33 17% | 35 19% | 32 17% | |

| | | Total | Sunday | Monday | Tuesday | Wednesday | Thursday | Friday | Saturday |
|---------------|--------------|------------|---------|---------|---------|-----------|----------|---------|----------|
| 1/2015 | 2200 | 142 100% | 18 13% | 25 18% | 18 13% | 21 15% | 13 9% | 25 18% | 22 15% |
| | 2300 | 123 100% | 10 8% | 17 14% | 16 13% | 19 15% | 17 14% | 14 11% | 30 24% |
| 2/2015 | Total | 3,708 100% | 440 12% | 555 15% | 527 14% | 548 15% | 547 15% | 562 15% | 529 14% |
| | 0000 | 121 100% | 19 16% | 20 17% | 16 13% | 22 18% | 21 17% | 11 9% | 12 10% |
| | 0100 | 92 100% | 11 12% | 11 12% | 10 11% | 15 16% | 11 12% | 14 15% | 20 22% |
| | 0200 | 94 100% | 25 27% | 10 11% | 12 13% | 10 11% | 13 14% | 10 11% | 14 15% |
| | 0300 | 93 100% | 17 18% | 8 9% | 17 18% | 12 13% | 11 12% | 17 18% | 11 12% |
| | 0400 | 73 100% | 19 26% | 9 12% | 12 16% | 8 11% | 7 10% | 6 8% | 12 16% |
| | 0500 | 60 100% | 5 8% | 11 18% | 6 10% | 8 13% | 15 25% | 10 17% | 5 8% |
| | 0600 | 61 100% | 2 3% | 12 20% | 12 20% | 12 20% | 7 11% | 9 15% | 7 11% |
| | 0700 | 126 100% | 8 6% | 28 22% | 21 17% | 15 12% | 23 18% | 14 11% | 17 13% |
| | 0800 | 175 100% | 16 9% | 28 16% | 24 14% | 30 17% | 21 12% | 34 19% | 22 13% |
| | 0900 | 192 100% | 19 10% | 38 20% | 28 15% | 23 12% | 37 19% | 34 18% | 13 7% |
| | 1000 | 194 100% | 29 15% | 23 12% | 37 19% | 28 14% | 34 18% | 26 13% | 17 9% |
| | 1100 | 206 100% | 24 12% | 27 13% | 36 17% | 34 17% | 23 11% | 22 11% | 40 19% |
| | 1200 | 203 100% | 18 9% | 37 18% | 26 13% | 22 11% | 35 17% | 36 18% | 29 14% |
| | 1300 | 191 100% | 22 12% | 36 19% | 15 8% | 33 17% | 18 9% | 34 18% | 33 17% |
| | 1400 | 192 100% | 23 12% | 35 18% | 19 10% | 31 16% | 24 13% | 31 16% | 29 15% |
| | 1500 | 182 100% | 11 6% | 31 17% | 26 14% | 32 18% | 30 16% | 26 14% | 26 14% |
| | 1600 | 218 100% | 25 11% | 24 11% | 34 16% | 40 18% | 40 18% | 24 11% | 31 14% |
| | 1700 | 202 100% | 18 9% | 28 14% | 26 13% | 32 16% | 31 15% | 32 16% | 35 17% |
| | 1800 | 218 100% | 29 13% | 36 17% | 36 17% | 33 15% | 25 11% | 34 16% | 25 11% |
| 1900 | 204 100% | 24 12% | 38 19% | 20 10% | 29 14% | 28 14% | 30 15% | 35 17% | |
| 2000 | 177 100% | 20 11% | 18 10% | 23 13% | 25 14% | 28 16% | 35 20% | 28 16% | |

| | | Total | Sunday | Monday | Tuesday | Wednesday | Thursday | Friday | Saturday |
|---------------|--------------|------------|---------|---------|---------|-----------|----------|---------|----------|
| 2/2015 | 2100 | 189 100% | 17 9% | 31 16% | 28 15% | 24 13% | 30 16% | 30 16% | 29 15% |
| | 2200 | 140 100% | 23 16% | 9 6% | 22 16% | 17 12% | 19 14% | 27 19% | 23 16% |
| | 2300 | 105 100% | 16 15% | 7 7% | 21 20% | 13 12% | 16 15% | 16 15% | 16 15% |
| 3/2015 | Total | 4,765 100% | 677 14% | 750 16% | 750 16% | 635 13% | 659 14% | 693 15% | 602 13% |
| | 0000 | 140 100% | 29 21% | 18 13% | 18 13% | 14 10% | 15 11% | 13 9% | 33 24% |
| | 0100 | 147 100% | 24 16% | 12 8% | 19 13% | 24 16% | 29 20% | 11 7% | 28 19% |
| | 0200 | 133 100% | 17 13% | 15 11% | 21 16% | 19 14% | 20 15% | 22 17% | 19 14% |
| | 0300 | 109 100% | 22 20% | 11 10% | 16 15% | 10 9% | 8 7% | 16 15% | 26 24% |
| | 0400 | 117 100% | 14 12% | 12 10% | 22 19% | 16 14% | 13 11% | 18 15% | 22 19% |
| | 0500 | 87 100% | 15 17% | 12 14% | 7 8% | 11 13% | 19 22% | 13 15% | 10 11% |
| | 0600 | 56 100% | 5 9% | 9 16% | 15 27% | 4 7% | 9 16% | 7 13% | 7 13% |
| | 0700 | 144 100% | 14 10% | 28 19% | 31 22% | 13 9% | 25 17% | 22 15% | 11 8% |
| | 0800 | 200 100% | 18 9% | 32 16% | 31 16% | 28 14% | 31 16% | 36 18% | 24 12% |
| | 0900 | 227 100% | 27 12% | 41 18% | 30 13% | 29 13% | 30 13% | 40 18% | 30 13% |
| | 1000 | 278 100% | 33 12% | 47 17% | 44 16% | 35 13% | 40 14% | 54 19% | 26 9% |
| | 1100 | 256 100% | 35 14% | 43 17% | 42 16% | 31 12% | 34 13% | 37 14% | 34 13% |
| | 1200 | 237 100% | 28 12% | 41 17% | 34 14% | 35 15% | 36 15% | 35 15% | 28 12% |
| | 1300 | 284 100% | 43 15% | 54 19% | 43 15% | 44 15% | 30 11% | 37 13% | 33 12% |
| | 1400 | 249 100% | 29 12% | 45 18% | 41 16% | 39 16% | 36 14% | 36 14% | 23 9% |
| | 1500 | 272 100% | 37 14% | 40 15% | 54 20% | 39 14% | 32 12% | 40 15% | 30 11% |
| | 1600 | 261 100% | 41 16% | 52 20% | 38 15% | 34 13% | 36 14% | 38 15% | 22 8% |
| | 1700 | 255 100% | 40 16% | 43 17% | 40 16% | 27 11% | 34 13% | 36 14% | 35 14% |
| 1800 | 246 100% | 45 18% | 42 17% | 40 16% | 30 12% | 33 13% | 32 13% | 24 10% | |
| 1900 | 253 100% | 32 13% | 38 15% | 43 17% | 38 15% | 35 14% | 36 14% | 31 12% | |

| | | Total | Sunday | Monday | Tuesday | Wednesday | Thursday | Friday | Saturday |
|---------------|--------------|------------|---------|---------|---------|-----------|----------|---------|----------|
| 3/2015 | 2000 | 229 100% | 45 20% | 28 12% | 33 14% | 34 15% | 30 13% | 25 11% | 34 15% |
| | 2100 | 240 100% | 39 16% | 37 15% | 35 15% | 30 13% | 35 15% | 35 15% | 29 12% |
| | 2200 | 184 100% | 27 15% | 30 16% | 27 15% | 23 13% | 23 13% | 32 17% | 22 12% |
| | 2300 | 161 100% | 18 11% | 20 12% | 26 16% | 28 17% | 26 16% | 22 14% | 21 13% |
| 4/2015 | Total | 5,726 100% | 757 13% | 805 14% | 717 13% | 928 16% | 995 17% | 751 13% | 773 13% |
| | 0000 | 218 100% | 42 19% | 29 13% | 27 12% | 35 16% | 38 17% | 13 6% | 34 16% |
| | 0100 | 163 100% | 32 20% | 19 12% | 20 12% | 17 10% | 27 17% | 27 17% | 21 13% |
| | 0200 | 158 100% | 42 27% | 13 8% | 15 9% | 17 11% | 22 14% | 22 14% | 27 17% |
| | 0300 | 121 100% | 23 19% | 13 11% | 10 8% | 16 13% | 22 18% | 20 17% | 17 14% |
| | 0400 | 88 100% | 10 11% | 16 18% | 4 5% | 19 22% | 12 14% | 15 17% | 12 14% |
| | 0500 | 91 100% | 14 15% | 13 14% | 10 11% | 20 22% | 14 15% | 10 11% | 10 11% |
| | 0600 | 72 100% | 8 11% | 7 10% | 15 21% | 7 10% | 21 29% | 7 10% | 7 10% |
| | 0700 | 154 100% | 16 10% | 28 18% | 21 14% | 18 12% | 27 18% | 26 17% | 18 12% |
| | 0800 | 219 100% | 22 10% | 35 16% | 34 16% | 34 16% | 42 19% | 24 11% | 28 13% |
| | 0900 | 258 100% | 28 11% | 38 15% | 37 14% | 46 18% | 49 19% | 29 11% | 31 12% |
| | 1000 | 320 100% | 40 13% | 50 16% | 43 13% | 59 18% | 52 16% | 38 12% | 38 12% |
| | 1100 | 281 100% | 34 12% | 33 12% | 39 14% | 51 18% | 43 15% | 41 15% | 40 14% |
| | 1200 | 277 100% | 31 11% | 33 12% | 36 13% | 55 20% | 54 19% | 42 15% | 26 9% |
| | 1300 | 341 100% | 37 11% | 50 15% | 44 13% | 63 18% | 59 17% | 37 11% | 51 15% |
| | 1400 | 294 100% | 35 12% | 54 18% | 34 12% | 43 15% | 51 17% | 39 13% | 38 13% |
| | 1500 | 305 100% | 31 10% | 53 17% | 44 14% | 56 18% | 51 17% | 30 10% | 40 13% |
| 1600 | 311 100% | 38 12% | 46 15% | 33 11% | 47 15% | 66 21% | 42 14% | 39 13% | |
| 1700 | 361 100% | 32 9% | 48 13% | 53 15% | 68 19% | 65 18% | 55 15% | 40 11% | |
| 1800 | 337 100% | 50 15% | 46 14% | 35 10% | 58 17% | 59 18% | 43 13% | 46 14% | |

| | | Total | Sunday | Monday | Tuesday | Wednesday | Thursday | Friday | Saturday |
|---------------|--------------|------------|---------|---------|---------|-----------|----------|-----------|-----------|
| 4/2015 | 1900 | 294 100% | 45 15% | 40 14% | 36 12% | 46 16% | 42 14% | 38 13% | 47 16% |
| | 2000 | 280 100% | 38 14% | 36 13% | 33 12% | 43 15% | 55 20% | 38 14% | 37 13% |
| | 2100 | 281 100% | 29 10% | 39 14% | 35 12% | 46 16% | 45 16% | 46 16% | 41 15% |
| | 2200 | 272 100% | 43 16% | 32 12% | 32 12% | 38 14% | 39 14% | 43 16% | 45 17% |
| | 2300 | 230 100% | 37 16% | 34 15% | 27 12% | 26 11% | 40 17% | 26 11% | 40 17% |
| 5/2015 | Total | 6,326 100% | 901 14% | 799 13% | 834 13% | 822 13% | 831 13% | 1,055 17% | 1,084 17% |
| | 0000 | 227 100% | 53 23% | 21 9% | 36 16% | 14 6% | 21 9% | 45 20% | 37 16% |
| | 0100 | 209 100% | 40 19% | 29 14% | 25 12% | 20 10% | 18 9% | 26 12% | 51 24% |
| | 0200 | 179 100% | 38 21% | 23 13% | 12 7% | 16 9% | 27 15% | 26 15% | 37 21% |
| | 0300 | 110 100% | 22 20% | 18 16% | 20 18% | 6 5% | 8 7% | 13 12% | 23 21% |
| | 0400 | 93 100% | 15 16% | 12 13% | 15 16% | 6 6% | 13 14% | 17 18% | 15 16% |
| | 0500 | 102 100% | 19 19% | 11 11% | 13 13% | 15 15% | 11 11% | 22 22% | 11 11% |
| | 0600 | 102 100% | 25 25% | 8 8% | 13 13% | 13 13% | 8 8% | 18 18% | 17 17% |
| | 0700 | 176 100% | 20 11% | 17 10% | 24 14% | 27 15% | 29 16% | 33 19% | 26 15% |
| | 0800 | 277 100% | 28 10% | 32 12% | 42 15% | 48 17% | 44 16% | 44 16% | 39 14% |
| | 0900 | 312 100% | 39 13% | 45 14% | 44 14% | 49 16% | 44 14% | 43 14% | 48 15% |
| | 1000 | 339 100% | 35 10% | 35 10% | 48 14% | 53 16% | 54 16% | 63 19% | 51 15% |
| | 1100 | 310 100% | 39 13% | 41 13% | 51 16% | 40 13% | 33 11% | 48 15% | 58 19% |
| | 1200 | 305 100% | 39 13% | 42 14% | 49 16% | 32 10% | 47 15% | 41 13% | 55 18% |
| | 1300 | 342 100% | 31 9% | 55 16% | 47 14% | 49 14% | 46 13% | 54 16% | 60 18% |
| | 1400 | 299 100% | 41 14% | 32 11% | 40 13% | 50 17% | 36 12% | 56 19% | 44 15% |
| | 1500 | 352 100% | 42 12% | 43 12% | 56 16% | 46 13% | 47 13% | 66 19% | 52 15% |
| 1600 | 341 100% | 38 11% | 50 15% | 52 15% | 47 14% | 39 11% | 62 18% | 53 16% | |
| 1700 | 384 100% | 44 11% | 50 13% | 44 11% | 52 14% | 59 15% | 62 16% | 73 19% | |

| | | Total | Sunday | Monday | Tuesday | Wednesday | Thursday | Friday | Saturday |
|---------------|--------------|------------|---------|-----------|-----------|-----------|----------|---------|----------|
| 5/2015 | 1800 | 356 100% | 48 13% | 38 11% | 41 12% | 63 18% | 47 13% | 60 17% | 59 17% |
| | 1900 | 325 100% | 51 16% | 37 11% | 41 13% | 45 14% | 45 14% | 44 14% | 62 19% |
| | 2000 | 311 100% | 48 15% | 35 11% | 30 10% | 37 12% | 38 12% | 61 20% | 62 20% |
| | 2100 | 341 100% | 60 18% | 45 13% | 26 8% | 39 11% | 48 14% | 62 18% | 61 18% |
| | 2200 | 270 100% | 51 19% | 42 16% | 26 10% | 37 14% | 36 13% | 43 16% | 35 13% |
| | 2300 | 264 100% | 35 13% | 38 14% | 39 15% | 18 7% | 33 13% | 46 17% | 55 21% |
| 6/2015 | Total | 6,146 100% | 757 12% | 1,083 18% | 1,021 17% | 846 14% | 773 13% | 891 14% | 775 13% |
| | 0000 | 257 100% | 50 19% | 42 16% | 39 15% | 29 11% | 20 8% | 39 15% | 38 15% |
| | 0100 | 207 100% | 40 19% | 26 13% | 31 15% | 28 14% | 24 12% | 29 14% | 29 14% |
| | 0200 | 168 100% | 34 20% | 20 12% | 31 18% | 23 14% | 10 6% | 29 17% | 21 13% |
| | 0300 | 132 100% | 21 16% | 18 14% | 21 16% | 17 13% | 22 17% | 17 13% | 16 12% |
| | 0400 | 98 100% | 16 16% | 16 16% | 25 26% | 8 8% | 13 13% | 9 9% | 11 11% |
| | 0500 | 79 100% | 17 22% | 9 11% | 19 24% | 6 8% | 10 13% | 8 10% | 10 13% |
| | 0600 | 97 100% | 14 14% | 19 20% | 17 18% | 16 16% | 12 12% | 15 15% | 4 4% |
| | 0700 | 143 100% | 10 7% | 23 16% | 22 15% | 25 17% | 18 13% | 27 19% | 18 13% |
| | 0800 | 222 100% | 18 8% | 37 17% | 36 16% | 34 15% | 38 17% | 33 15% | 26 12% |
| | 0900 | 277 100% | 33 12% | 57 21% | 51 18% | 30 11% | 28 10% | 44 16% | 34 12% |
| | 1000 | 306 100% | 30 10% | 61 20% | 43 14% | 52 17% | 36 12% | 47 15% | 37 12% |
| | 1100 | 312 100% | 35 11% | 57 18% | 58 19% | 54 17% | 37 12% | 37 12% | 34 11% |
| | 1200 | 313 100% | 35 11% | 53 17% | 55 18% | 44 14% | 39 12% | 58 19% | 29 9% |
| | 1300 | 347 100% | 41 12% | 65 19% | 67 19% | 39 11% | 46 13% | 47 14% | 42 12% |
| 1400 | 310 100% | 24 8% | 55 18% | 46 15% | 56 18% | 48 15% | 45 15% | 36 12% | |
| 1500 | 318 100% | 29 9% | 59 19% | 53 17% | 46 14% | 47 15% | 44 14% | 40 13% | |
| 1600 | 315 100% | 34 11% | 59 19% | 49 16% | 42 13% | 42 13% | 52 17% | 37 12% | |

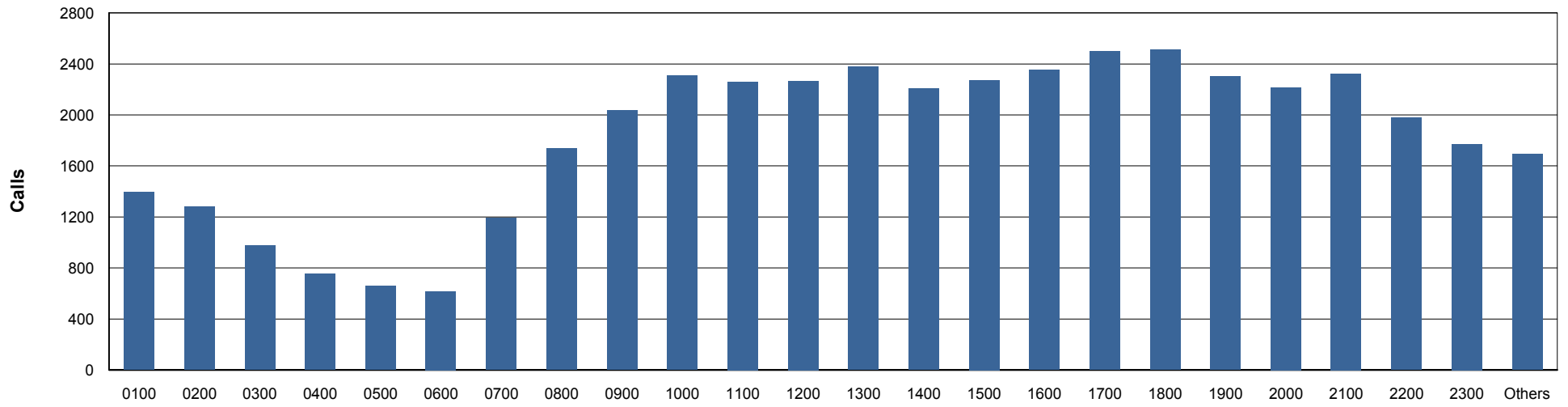
| | | Total | Sunday | Monday | Tuesday | Wednesday | Thursday | Friday | Saturday |
|---------------|--------------|------------|---------|---------|---------|-----------|-----------|-----------|----------|
| 6/2015 | 1700 | 347 100% | 40 12% | 64 18% | 60 17% | 50 14% | 47 14% | 45 13% | 41 12% |
| | 1800 | 341 100% | 34 10% | 78 23% | 64 19% | 44 13% | 35 10% | 48 14% | 38 11% |
| | 1900 | 348 100% | 48 14% | 68 20% | 52 15% | 50 14% | 39 11% | 42 12% | 49 14% |
| | 2000 | 313 100% | 37 12% | 52 17% | 56 18% | 37 12% | 46 15% | 45 14% | 40 13% |
| | 2100 | 321 100% | 38 12% | 56 17% | 47 15% | 43 13% | 45 14% | 36 11% | 56 17% |
| | 2200 | 320 100% | 42 13% | 52 16% | 44 14% | 40 13% | 42 13% | 56 18% | 44 14% |
| | 2300 | 255 100% | 37 15% | 37 15% | 35 14% | 33 13% | 29 11% | 39 15% | 45 18% |
| 7/2015 | Total | 6,698 100% | 735 11% | 843 13% | 868 13% | 1,048 16% | 1,171 17% | 1,160 17% | 873 13% |
| | 0000 | 297 100% | 45 15% | 22 7% | 50 17% | 32 11% | 43 14% | 48 16% | 57 19% |
| | 0100 | 227 100% | 35 15% | 24 11% | 23 10% | 24 11% | 48 21% | 31 14% | 42 19% |
| | 0200 | 221 100% | 33 15% | 25 11% | 15 7% | 37 17% | 37 17% | 41 19% | 33 15% |
| | 0300 | 166 100% | 29 17% | 17 10% | 19 11% | 20 12% | 17 10% | 35 21% | 29 17% |
| | 0400 | 118 100% | 18 15% | 5 4% | 17 14% | 20 17% | 27 23% | 19 16% | 12 10% |
| | 0500 | 87 100% | 9 10% | 5 6% | 15 17% | 24 28% | 14 16% | 14 16% | 6 7% |
| | 0600 | 88 100% | 7 8% | 12 14% | 15 17% | 12 14% | 15 17% | 9 10% | 18 20% |
| | 0700 | 184 100% | 17 9% | 29 16% | 26 14% | 30 16% | 33 18% | 31 17% | 18 10% |
| | 0800 | 223 100% | 14 6% | 34 15% | 31 14% | 41 18% | 34 15% | 47 21% | 22 10% |
| | 0900 | 273 100% | 19 7% | 39 14% | 42 15% | 47 17% | 60 22% | 37 14% | 29 11% |
| | 1000 | 306 100% | 32 10% | 31 10% | 48 16% | 53 17% | 49 16% | 63 21% | 30 10% |
| | 1100 | 315 100% | 30 10% | 51 16% | 38 12% | 60 19% | 57 18% | 43 14% | 36 11% |
| | 1200 | 351 100% | 31 9% | 50 14% | 42 12% | 55 16% | 58 17% | 75 21% | 40 11% |
| | 1300 | 321 100% | 30 9% | 43 13% | 40 12% | 60 19% | 49 15% | 63 20% | 36 11% |
| 1400 | 315 100% | 31 10% | 54 17% | 39 12% | 46 15% | 58 18% | 62 20% | 25 8% | |
| 1500 | 285 100% | 25 9% | 47 16% | 29 10% | 59 21% | 51 18% | 46 16% | 28 10% | |

| | | Total | Sunday | Monday | Tuesday | Wednesday | Thursday | Friday | Saturday |
|---------------|--------------|------------|---------|-----------|---------|-----------|----------|---------|-----------|
| 7/2015 | 1600 | 334 100% | 38 11% | 33 10% | 58 17% | 56 17% | 77 23% | 49 15% | 23 7% |
| | 1700 | 360 100% | 38 11% | 48 13% | 38 11% | 59 16% | 56 16% | 78 22% | 43 12% |
| | 1800 | 425 100% | 52 12% | 61 14% | 57 13% | 57 13% | 67 16% | 70 16% | 61 14% |
| | 1900 | 353 100% | 33 9% | 48 14% | 39 11% | 44 12% | 74 21% | 61 17% | 54 15% |
| | 2000 | 351 100% | 36 10% | 28 8% | 60 17% | 55 16% | 62 18% | 57 16% | 53 15% |
| | 2100 | 403 100% | 46 11% | 56 14% | 55 14% | 62 15% | 66 16% | 55 14% | 63 16% |
| | 2200 | 362 100% | 47 13% | 42 12% | 43 12% | 48 13% | 58 16% | 60 17% | 64 18% |
| | 2300 | 333 100% | 40 12% | 39 12% | 29 9% | 47 14% | 61 18% | 66 20% | 51 15% |
| 8/2015 | Total | 6,590 100% | 907 14% | 1,062 16% | 849 13% | 856 13% | 904 14% | 947 14% | 1,065 16% |
| | 0000 | 295 100% | 51 17% | 38 13% | 30 10% | 34 12% | 39 13% | 36 12% | 67 23% |
| | 0100 | 237 100% | 49 21% | 32 14% | 23 10% | 28 12% | 18 8% | 37 16% | 50 21% |
| | 0200 | 202 100% | 42 21% | 26 13% | 12 6% | 19 9% | 28 14% | 25 12% | 50 25% |
| | 0300 | 155 100% | 31 20% | 13 8% | 18 12% | 21 14% | 19 12% | 27 17% | 26 17% |
| | 0400 | 84 100% | 14 17% | 19 23% | 10 12% | 10 12% | 8 10% | 10 12% | 13 15% |
| | 0500 | 81 100% | 22 27% | 12 15% | 11 14% | 7 9% | 9 11% | 12 15% | 8 10% |
| | 0600 | 79 100% | 10 13% | 7 9% | 20 25% | 14 18% | 8 10% | 9 11% | 11 14% |
| | 0700 | 172 100% | 18 10% | 33 19% | 28 16% | 28 16% | 16 9% | 23 13% | 26 15% |
| | 0800 | 243 100% | 31 13% | 39 16% | 47 19% | 31 13% | 29 12% | 34 14% | 32 13% |
| | 0900 | 272 100% | 29 11% | 44 16% | 50 18% | 35 13% | 30 11% | 49 18% | 35 13% |
| | 1000 | 362 100% | 44 12% | 69 19% | 46 13% | 57 16% | 47 13% | 48 13% | 51 14% |
| | 1100 | 373 100% | 45 12% | 55 15% | 55 15% | 51 14% | 57 15% | 55 15% | 55 15% |
| | 1200 | 342 100% | 36 11% | 63 18% | 50 15% | 46 13% | 57 17% | 43 13% | 47 14% |
| | 1300 | 328 100% | 30 9% | 50 15% | 44 13% | 44 13% | 63 19% | 41 13% | 56 17% |
| 1400 | 333 100% | 33 10% | 75 23% | 42 13% | 43 13% | 47 14% | 47 14% | 46 14% | |

| | | Total | Sunday | Monday | Tuesday | Wednesday | Thursday | Friday | Saturday |
|---------------|-------------|--------------|---------------|---------------|----------------|------------------|-----------------|---------------|-----------------|
| 8/2015 | 1500 | 341 100% | 33 10% | 62 18% | 41 12% | 63 18% | 52 15% | 49 14% | 41 12% |
| | 1600 | 355 100% | 53 15% | 62 17% | 43 12% | 47 13% | 45 13% | 61 17% | 44 12% |
| | 1700 | 338 100% | 45 13% | 59 17% | 34 10% | 43 13% | 55 16% | 51 15% | 51 15% |
| | 1800 | 355 100% | 51 14% | 64 18% | 45 13% | 40 11% | 42 12% | 48 14% | 65 18% |
| | 1900 | 340 100% | 48 14% | 51 15% | 39 11% | 46 14% | 51 15% | 54 16% | 51 15% |
| | 2000 | 359 100% | 66 18% | 52 14% | 51 14% | 37 10% | 49 14% | 49 14% | 55 15% |
| | 2100 | 357 100% | 39 11% | 57 16% | 42 12% | 51 14% | 57 16% | 55 15% | 56 16% |
| | 2200 | 287 100% | 45 16% | 41 14% | 30 10% | 29 10% | 34 12% | 43 15% | 65 23% |
| | 2300 | 300 100% | 42 14% | 39 13% | 38 13% | 32 11% | 44 15% | 41 14% | 64 21% |

Calls Received by Hour

For 2015



Calls Received by Month, Hour, and Day of Week

| | | Total | Sunday | Monday | Tuesday | Wednesday | Thursday | Friday | Saturday |
|---------------|--------------|-------------|-----------|-----------|-----------|-----------|-----------|-----------|-----------|
| Total | | 43,943 100% | 5,636 13% | 6,429 15% | 6,077 14% | 6,194 14% | 6,541 15% | 6,752 15% | 6,315 14% |
| 1/2015 | Total | 3,984 100% | 462 12% | 532 13% | 511 13% | 511 13% | 661 17% | 693 17% | 614 15% |
| | 0000 | 120 100% | 22 18% | 15 13% | 11 9% | 11 9% | 31 26% | 14 12% | 16 13% |
| | 0100 | 110 100% | 21 19% | 16 15% | 5 5% | 12 11% | 19 17% | 15 14% | 22 20% |
| | 0200 | 122 100% | 24 20% | 9 7% | 12 10% | 14 11% | 16 13% | 23 19% | 24 20% |
| | 0300 | 91 100% | 13 14% | 8 9% | 6 7% | 8 9% | 22 24% | 19 21% | 15 16% |
| | 0400 | 83 100% | 10 12% | 11 13% | 11 13% | 8 10% | 14 17% | 17 20% | 12 14% |
| | 0500 | 70 100% | 7 10% | 10 14% | 8 11% | 10 14% | 9 13% | 14 20% | 12 17% |
| | 0600 | 64 100% | 6 9% | 12 19% | 13 20% | 4 6% | 12 19% | 9 14% | 8 13% |
| | 0700 | 91 100% | 7 8% | 16 18% | 21 23% | 19 21% | 11 12% | 10 11% | 7 8% |
| | 0800 | 174 100% | 16 9% | 24 14% | 26 15% | 30 17% | 24 14% | 35 20% | 19 11% |
| | 0900 | 223 100% | 23 10% | 21 9% | 24 11% | 33 15% | 38 17% | 50 22% | 34 15% |
| | 1000 | 203 100% | 24 12% | 26 13% | 26 13% | 23 11% | 44 22% | 25 12% | 35 17% |
| | 1100 | 209 100% | 23 11% | 36 17% | 25 12% | 24 11% | 31 15% | 33 16% | 37 18% |
| | 1200 | 237 100% | 22 9% | 36 15% | 44 19% | 26 11% | 36 15% | 39 16% | 34 14% |
| | 1300 | 223 100% | 34 15% | 26 12% | 19 9% | 31 14% | 49 22% | 34 15% | 30 13% |
| | 1400 | 214 100% | 14 7% | 31 14% | 24 11% | 32 15% | 36 17% | 46 21% | 31 14% |
| | 1500 | 216 100% | 22 10% | 27 13% | 34 16% | 21 10% | 39 18% | 37 17% | 36 17% |
| | 1600 | 218 100% | 19 9% | 39 18% | 35 16% | 22 10% | 34 16% | 37 17% | 32 15% |
| | 1700 | 250 100% | 34 14% | 38 15% | 27 11% | 29 12% | 38 15% | 44 18% | 40 16% |
| 1800 | 232 100% | 26 11% | 23 10% | 38 16% | 28 12% | 41 18% | 39 17% | 37 16% | |
| 1900 | 182 100% | 17 9% | 20 11% | 21 12% | 29 16% | 33 18% | 38 21% | 24 13% | |

| | | Total | Sunday | Monday | Tuesday | Wednesday | Thursday | Friday | Saturday |
|---------------|--------------|------------|---------|---------|---------|-----------|----------|---------|----------|
| 1/2015 | 2000 | 196 100% | 31 16% | 23 12% | 21 11% | 34 17% | 21 11% | 41 21% | 25 13% |
| | 2100 | 191 100% | 19 10% | 23 12% | 26 14% | 23 12% | 33 17% | 35 19% | 32 17% |
| | 2200 | 142 100% | 18 13% | 25 18% | 18 13% | 21 15% | 13 9% | 25 18% | 22 15% |
| | 2300 | 123 100% | 10 8% | 17 14% | 16 13% | 19 15% | 17 14% | 14 11% | 30 24% |
| 2/2015 | Total | 3,708 100% | 440 12% | 555 15% | 527 14% | 548 15% | 547 15% | 562 15% | 529 14% |
| | 0000 | 121 100% | 19 16% | 20 17% | 16 13% | 22 18% | 21 17% | 11 9% | 12 10% |
| | 0100 | 92 100% | 11 12% | 11 12% | 10 11% | 15 16% | 11 12% | 14 15% | 20 22% |
| | 0200 | 94 100% | 25 27% | 10 11% | 12 13% | 10 11% | 13 14% | 10 11% | 14 15% |
| | 0300 | 93 100% | 17 18% | 8 9% | 17 18% | 12 13% | 11 12% | 17 18% | 11 12% |
| | 0400 | 73 100% | 19 26% | 9 12% | 12 16% | 8 11% | 7 10% | 6 8% | 12 16% |
| | 0500 | 60 100% | 5 8% | 11 18% | 6 10% | 8 13% | 15 25% | 10 17% | 5 8% |
| | 0600 | 61 100% | 2 3% | 12 20% | 12 20% | 12 20% | 7 11% | 9 15% | 7 11% |
| | 0700 | 126 100% | 8 6% | 28 22% | 21 17% | 15 12% | 23 18% | 14 11% | 17 13% |
| | 0800 | 175 100% | 16 9% | 28 16% | 24 14% | 30 17% | 21 12% | 34 19% | 22 13% |
| | 0900 | 192 100% | 19 10% | 38 20% | 28 15% | 23 12% | 37 19% | 34 18% | 13 7% |
| | 1000 | 194 100% | 29 15% | 23 12% | 37 19% | 28 14% | 34 18% | 26 13% | 17 9% |
| | 1100 | 206 100% | 24 12% | 27 13% | 36 17% | 34 17% | 23 11% | 22 11% | 40 19% |
| | 1200 | 203 100% | 18 9% | 37 18% | 26 13% | 22 11% | 35 17% | 36 18% | 29 14% |
| | 1300 | 191 100% | 22 12% | 36 19% | 15 8% | 33 17% | 18 9% | 34 18% | 33 17% |
| | 1400 | 192 100% | 23 12% | 35 18% | 19 10% | 31 16% | 24 13% | 31 16% | 29 15% |
| | 1500 | 182 100% | 11 6% | 31 17% | 26 14% | 32 18% | 30 16% | 26 14% | 26 14% |
| 1600 | 218 100% | 25 11% | 24 11% | 34 16% | 40 18% | 40 18% | 24 11% | 31 14% | |
| 1700 | 202 100% | 18 9% | 28 14% | 26 13% | 32 16% | 31 15% | 32 16% | 35 17% | |
| 1800 | 218 100% | 29 13% | 36 17% | 36 17% | 33 15% | 25 11% | 34 16% | 25 11% | |

| | | Total | Sunday | Monday | Tuesday | Wednesday | Thursday | Friday | Saturday |
|---------------|--------------|------------|---------|---------|---------|-----------|----------|---------|----------|
| 2/2015 | 1900 | 204 100% | 24 12% | 38 19% | 20 10% | 29 14% | 28 14% | 30 15% | 35 17% |
| | 2000 | 177 100% | 20 11% | 18 10% | 23 13% | 25 14% | 28 16% | 35 20% | 28 16% |
| | 2100 | 189 100% | 17 9% | 31 16% | 28 15% | 24 13% | 30 16% | 30 16% | 29 15% |
| | 2200 | 140 100% | 23 16% | 9 6% | 22 16% | 17 12% | 19 14% | 27 19% | 23 16% |
| | 2300 | 105 100% | 16 15% | 7 7% | 21 20% | 13 12% | 16 15% | 16 15% | 16 15% |
| 3/2015 | Total | 4,765 100% | 677 14% | 750 16% | 750 16% | 635 13% | 659 14% | 693 15% | 602 13% |
| | 0000 | 140 100% | 29 21% | 18 13% | 18 13% | 14 10% | 15 11% | 13 9% | 33 24% |
| | 0100 | 147 100% | 24 16% | 12 8% | 19 13% | 24 16% | 29 20% | 11 7% | 28 19% |
| | 0200 | 133 100% | 17 13% | 15 11% | 21 16% | 19 14% | 20 15% | 22 17% | 19 14% |
| | 0300 | 109 100% | 22 20% | 11 10% | 16 15% | 10 9% | 8 7% | 16 15% | 26 24% |
| | 0400 | 117 100% | 14 12% | 12 10% | 22 19% | 16 14% | 13 11% | 18 15% | 22 19% |
| | 0500 | 87 100% | 15 17% | 12 14% | 7 8% | 11 13% | 19 22% | 13 15% | 10 11% |
| | 0600 | 56 100% | 5 9% | 9 16% | 15 27% | 4 7% | 9 16% | 7 13% | 7 13% |
| | 0700 | 144 100% | 14 10% | 28 19% | 31 22% | 13 9% | 25 17% | 22 15% | 11 8% |
| | 0800 | 200 100% | 18 9% | 32 16% | 31 16% | 28 14% | 31 16% | 36 18% | 24 12% |
| | 0900 | 227 100% | 27 12% | 41 18% | 30 13% | 29 13% | 30 13% | 40 18% | 30 13% |
| | 1000 | 278 100% | 33 12% | 47 17% | 44 16% | 35 13% | 40 14% | 54 19% | 26 9% |
| | 1100 | 256 100% | 35 14% | 43 17% | 42 16% | 31 12% | 34 13% | 37 14% | 34 13% |
| | 1200 | 237 100% | 28 12% | 41 17% | 34 14% | 35 15% | 36 15% | 35 15% | 28 12% |
| | 1300 | 284 100% | 43 15% | 54 19% | 43 15% | 44 15% | 30 11% | 37 13% | 33 12% |
| 1400 | 249 100% | 29 12% | 45 18% | 41 16% | 39 16% | 36 14% | 36 14% | 23 9% | |
| 1500 | 272 100% | 37 14% | 40 15% | 54 20% | 39 14% | 32 12% | 40 15% | 30 11% | |
| 1600 | 261 100% | 41 16% | 52 20% | 38 15% | 34 13% | 36 14% | 38 15% | 22 8% | |
| 1700 | 255 100% | 40 16% | 43 17% | 40 16% | 27 11% | 34 13% | 36 14% | 35 14% | |

| | | Total | Sunday | Monday | Tuesday | Wednesday | Thursday | Friday | Saturday |
|---------------|--------------|------------|---------|---------|---------|-----------|----------|---------|----------|
| 3/2015 | 1800 | 246 100% | 45 18% | 42 17% | 40 16% | 30 12% | 33 13% | 32 13% | 24 10% |
| | 1900 | 253 100% | 32 13% | 38 15% | 43 17% | 38 15% | 35 14% | 36 14% | 31 12% |
| | 2000 | 229 100% | 45 20% | 28 12% | 33 14% | 34 15% | 30 13% | 25 11% | 34 15% |
| | 2100 | 240 100% | 39 16% | 37 15% | 35 15% | 30 13% | 35 15% | 35 15% | 29 12% |
| | 2200 | 184 100% | 27 15% | 30 16% | 27 15% | 23 13% | 23 13% | 32 17% | 22 12% |
| | 2300 | 161 100% | 18 11% | 20 12% | 26 16% | 28 17% | 26 16% | 22 14% | 21 13% |
| 4/2015 | Total | 5,726 100% | 757 13% | 805 14% | 717 13% | 928 16% | 995 17% | 751 13% | 773 13% |
| | 0000 | 218 100% | 42 19% | 29 13% | 27 12% | 35 16% | 38 17% | 13 6% | 34 16% |
| | 0100 | 163 100% | 32 20% | 19 12% | 20 12% | 17 10% | 27 17% | 27 17% | 21 13% |
| | 0200 | 158 100% | 42 27% | 13 8% | 15 9% | 17 11% | 22 14% | 22 14% | 27 17% |
| | 0300 | 121 100% | 23 19% | 13 11% | 10 8% | 16 13% | 22 18% | 20 17% | 17 14% |
| | 0400 | 88 100% | 10 11% | 16 18% | 4 5% | 19 22% | 12 14% | 15 17% | 12 14% |
| | 0500 | 91 100% | 14 15% | 13 14% | 10 11% | 20 22% | 14 15% | 10 11% | 10 11% |
| | 0600 | 72 100% | 8 11% | 7 10% | 15 21% | 7 10% | 21 29% | 7 10% | 7 10% |
| | 0700 | 154 100% | 16 10% | 28 18% | 21 14% | 18 12% | 27 18% | 26 17% | 18 12% |
| | 0800 | 219 100% | 22 10% | 35 16% | 34 16% | 34 16% | 42 19% | 24 11% | 28 13% |
| | 0900 | 258 100% | 28 11% | 38 15% | 37 14% | 46 18% | 49 19% | 29 11% | 31 12% |
| | 1000 | 320 100% | 40 13% | 50 16% | 43 13% | 59 18% | 52 16% | 38 12% | 38 12% |
| | 1100 | 281 100% | 34 12% | 33 12% | 39 14% | 51 18% | 43 15% | 41 15% | 40 14% |
| | 1200 | 277 100% | 31 11% | 33 12% | 36 13% | 55 20% | 54 19% | 42 15% | 26 9% |
| | 1300 | 341 100% | 37 11% | 50 15% | 44 13% | 63 18% | 59 17% | 37 11% | 51 15% |
| 1400 | 294 100% | 35 12% | 54 18% | 34 12% | 43 15% | 51 17% | 39 13% | 38 13% | |
| 1500 | 305 100% | 31 10% | 53 17% | 44 14% | 56 18% | 51 17% | 30 10% | 40 13% | |
| 1600 | 311 100% | 38 12% | 46 15% | 33 11% | 47 15% | 66 21% | 42 14% | 39 13% | |

| | | Total | Sunday | Monday | Tuesday | Wednesday | Thursday | Friday | Saturday |
|---------------|--------------|------------|---------|---------|---------|-----------|----------|-----------|-----------|
| 4/2015 | 1700 | 361 100% | 32 9% | 48 13% | 53 15% | 68 19% | 65 18% | 55 15% | 40 11% |
| | 1800 | 337 100% | 50 15% | 46 14% | 35 10% | 58 17% | 59 18% | 43 13% | 46 14% |
| | 1900 | 294 100% | 45 15% | 40 14% | 36 12% | 46 16% | 42 14% | 38 13% | 47 16% |
| | 2000 | 280 100% | 38 14% | 36 13% | 33 12% | 43 15% | 55 20% | 38 14% | 37 13% |
| | 2100 | 281 100% | 29 10% | 39 14% | 35 12% | 46 16% | 45 16% | 46 16% | 41 15% |
| | 2200 | 272 100% | 43 16% | 32 12% | 32 12% | 38 14% | 39 14% | 43 16% | 45 17% |
| | 2300 | 230 100% | 37 16% | 34 15% | 27 12% | 26 11% | 40 17% | 26 11% | 40 17% |
| 5/2015 | Total | 6,326 100% | 901 14% | 799 13% | 834 13% | 822 13% | 831 13% | 1,055 17% | 1,084 17% |
| | 0000 | 227 100% | 53 23% | 21 9% | 36 16% | 14 6% | 21 9% | 45 20% | 37 16% |
| | 0100 | 209 100% | 40 19% | 29 14% | 25 12% | 20 10% | 18 9% | 26 12% | 51 24% |
| | 0200 | 179 100% | 38 21% | 23 13% | 12 7% | 16 9% | 27 15% | 26 15% | 37 21% |
| | 0300 | 110 100% | 22 20% | 18 16% | 20 18% | 6 5% | 8 7% | 13 12% | 23 21% |
| | 0400 | 93 100% | 15 16% | 12 13% | 15 16% | 6 6% | 13 14% | 17 18% | 15 16% |
| | 0500 | 102 100% | 19 19% | 11 11% | 13 13% | 15 15% | 11 11% | 22 22% | 11 11% |
| | 0600 | 102 100% | 25 25% | 8 8% | 13 13% | 13 13% | 8 8% | 18 18% | 17 17% |
| | 0700 | 176 100% | 20 11% | 17 10% | 24 14% | 27 15% | 29 16% | 33 19% | 26 15% |
| | 0800 | 277 100% | 28 10% | 32 12% | 42 15% | 48 17% | 44 16% | 44 16% | 39 14% |
| | 0900 | 312 100% | 39 13% | 45 14% | 44 14% | 49 16% | 44 14% | 43 14% | 48 15% |
| | 1000 | 339 100% | 35 10% | 35 10% | 48 14% | 53 16% | 54 16% | 63 19% | 51 15% |
| | 1100 | 310 100% | 39 13% | 41 13% | 51 16% | 40 13% | 33 11% | 48 15% | 58 19% |
| | 1200 | 305 100% | 39 13% | 42 14% | 49 16% | 32 10% | 47 15% | 41 13% | 55 18% |
| | 1300 | 342 100% | 31 9% | 55 16% | 47 14% | 49 14% | 46 13% | 54 16% | 60 18% |
| 1400 | 299 100% | 41 14% | 32 11% | 40 13% | 50 17% | 36 12% | 56 19% | 44 15% | |
| 1500 | 352 100% | 42 12% | 43 12% | 56 16% | 46 13% | 47 13% | 66 19% | 52 15% | |

| | | Total | Sunday | Monday | Tuesday | Wednesday | Thursday | Friday | Saturday |
|---------------|--------------|------------|---------|-----------|-----------|-----------|----------|---------|----------|
| 5/2015 | 1600 | 341 100% | 38 11% | 50 15% | 52 15% | 47 14% | 39 11% | 62 18% | 53 16% |
| | 1700 | 384 100% | 44 11% | 50 13% | 44 11% | 52 14% | 59 15% | 62 16% | 73 19% |
| | 1800 | 356 100% | 48 13% | 38 11% | 41 12% | 63 18% | 47 13% | 60 17% | 59 17% |
| | 1900 | 325 100% | 51 16% | 37 11% | 41 13% | 45 14% | 45 14% | 44 14% | 62 19% |
| | 2000 | 311 100% | 48 15% | 35 11% | 30 10% | 37 12% | 38 12% | 61 20% | 62 20% |
| | 2100 | 341 100% | 60 18% | 45 13% | 26 8% | 39 11% | 48 14% | 62 18% | 61 18% |
| | 2200 | 270 100% | 51 19% | 42 16% | 26 10% | 37 14% | 36 13% | 43 16% | 35 13% |
| | 2300 | 264 100% | 35 13% | 38 14% | 39 15% | 18 7% | 33 13% | 46 17% | 55 21% |
| 6/2015 | Total | 6,146 100% | 757 12% | 1,083 18% | 1,021 17% | 846 14% | 773 13% | 891 14% | 775 13% |
| | 0000 | 257 100% | 50 19% | 42 16% | 39 15% | 29 11% | 20 8% | 39 15% | 38 15% |
| | 0100 | 207 100% | 40 19% | 26 13% | 31 15% | 28 14% | 24 12% | 29 14% | 29 14% |
| | 0200 | 168 100% | 34 20% | 20 12% | 31 18% | 23 14% | 10 6% | 29 17% | 21 13% |
| | 0300 | 132 100% | 21 16% | 18 14% | 21 16% | 17 13% | 22 17% | 17 13% | 16 12% |
| | 0400 | 98 100% | 16 16% | 16 16% | 25 26% | 8 8% | 13 13% | 9 9% | 11 11% |
| | 0500 | 79 100% | 17 22% | 9 11% | 19 24% | 6 8% | 10 13% | 8 10% | 10 13% |
| | 0600 | 97 100% | 14 14% | 19 20% | 17 18% | 16 16% | 12 12% | 15 15% | 4 4% |
| | 0700 | 143 100% | 10 7% | 23 16% | 22 15% | 25 17% | 18 13% | 27 19% | 18 13% |
| | 0800 | 222 100% | 18 8% | 37 17% | 36 16% | 34 15% | 38 17% | 33 15% | 26 12% |
| | 0900 | 277 100% | 33 12% | 57 21% | 51 18% | 30 11% | 28 10% | 44 16% | 34 12% |
| | 1000 | 306 100% | 30 10% | 61 20% | 43 14% | 52 17% | 36 12% | 47 15% | 37 12% |
| | 1100 | 312 100% | 35 11% | 57 18% | 58 19% | 54 17% | 37 12% | 37 12% | 34 11% |
| | 1200 | 313 100% | 35 11% | 53 17% | 55 18% | 44 14% | 39 12% | 58 19% | 29 9% |
| | 1300 | 347 100% | 41 12% | 65 19% | 67 19% | 39 11% | 46 13% | 47 14% | 42 12% |
| 1400 | 310 100% | 24 8% | 55 18% | 46 15% | 56 18% | 48 15% | 45 15% | 36 12% | |

| | | Total | Sunday | Monday | Tuesday | Wednesday | Thursday | Friday | Saturday |
|---------------|--------------|------------|---------|---------|---------|-----------|-----------|-----------|----------|
| 6/2015 | 1500 | 318 100% | 29 9% | 59 19% | 53 17% | 46 14% | 47 15% | 44 14% | 40 13% |
| | 1600 | 315 100% | 34 11% | 59 19% | 49 16% | 42 13% | 42 13% | 52 17% | 37 12% |
| | 1700 | 347 100% | 40 12% | 64 18% | 60 17% | 50 14% | 47 14% | 45 13% | 41 12% |
| | 1800 | 341 100% | 34 10% | 78 23% | 64 19% | 44 13% | 35 10% | 48 14% | 38 11% |
| | 1900 | 348 100% | 48 14% | 68 20% | 52 15% | 50 14% | 39 11% | 42 12% | 49 14% |
| | 2000 | 313 100% | 37 12% | 52 17% | 56 18% | 37 12% | 46 15% | 45 14% | 40 13% |
| | 2100 | 321 100% | 38 12% | 56 17% | 47 15% | 43 13% | 45 14% | 36 11% | 56 17% |
| | 2200 | 320 100% | 42 13% | 52 16% | 44 14% | 40 13% | 42 13% | 56 18% | 44 14% |
| | 2300 | 255 100% | 37 15% | 37 15% | 35 14% | 33 13% | 29 11% | 39 15% | 45 18% |
| 7/2015 | Total | 6,698 100% | 735 11% | 843 13% | 868 13% | 1,048 16% | 1,171 17% | 1,160 17% | 873 13% |
| | 0000 | 297 100% | 45 15% | 22 7% | 50 17% | 32 11% | 43 14% | 48 16% | 57 19% |
| | 0100 | 227 100% | 35 15% | 24 11% | 23 10% | 24 11% | 48 21% | 31 14% | 42 19% |
| | 0200 | 221 100% | 33 15% | 25 11% | 15 7% | 37 17% | 37 17% | 41 19% | 33 15% |
| | 0300 | 166 100% | 29 17% | 17 10% | 19 11% | 20 12% | 17 10% | 35 21% | 29 17% |
| | 0400 | 118 100% | 18 15% | 5 4% | 17 14% | 20 17% | 27 23% | 19 16% | 12 10% |
| | 0500 | 87 100% | 9 10% | 5 6% | 15 17% | 24 28% | 14 16% | 14 16% | 6 7% |
| | 0600 | 88 100% | 7 8% | 12 14% | 15 17% | 12 14% | 15 17% | 9 10% | 18 20% |
| | 0700 | 184 100% | 17 9% | 29 16% | 26 14% | 30 16% | 33 18% | 31 17% | 18 10% |
| | 0800 | 223 100% | 14 6% | 34 15% | 31 14% | 41 18% | 34 15% | 47 21% | 22 10% |
| | 0900 | 273 100% | 19 7% | 39 14% | 42 15% | 47 17% | 60 22% | 37 14% | 29 11% |
| | 1000 | 306 100% | 32 10% | 31 10% | 48 16% | 53 17% | 49 16% | 63 21% | 30 10% |
| | 1100 | 315 100% | 30 10% | 51 16% | 38 12% | 60 19% | 57 18% | 43 14% | 36 11% |
| | 1200 | 351 100% | 31 9% | 50 14% | 42 12% | 55 16% | 58 17% | 75 21% | 40 11% |
| | 1300 | 321 100% | 30 9% | 43 13% | 40 12% | 60 19% | 49 15% | 63 20% | 36 11% |

| | | Total | Sunday | Monday | Tuesday | Wednesday | Thursday | Friday | Saturday |
|---------------|--------------|------------|---------|-----------|---------|-----------|----------|---------|-----------|
| 7/2015 | 1400 | 315 100% | 31 10% | 54 17% | 39 12% | 46 15% | 58 18% | 62 20% | 25 8% |
| | 1500 | 285 100% | 25 9% | 47 16% | 29 10% | 59 21% | 51 18% | 46 16% | 28 10% |
| | 1600 | 334 100% | 38 11% | 33 10% | 58 17% | 56 17% | 77 23% | 49 15% | 23 7% |
| | 1700 | 360 100% | 38 11% | 48 13% | 38 11% | 59 16% | 56 16% | 78 22% | 43 12% |
| | 1800 | 425 100% | 52 12% | 61 14% | 57 13% | 57 13% | 67 16% | 70 16% | 61 14% |
| | 1900 | 353 100% | 33 9% | 48 14% | 39 11% | 44 12% | 74 21% | 61 17% | 54 15% |
| | 2000 | 351 100% | 36 10% | 28 8% | 60 17% | 55 16% | 62 18% | 57 16% | 53 15% |
| | 2100 | 403 100% | 46 11% | 56 14% | 55 14% | 62 15% | 66 16% | 55 14% | 63 16% |
| | 2200 | 362 100% | 47 13% | 42 12% | 43 12% | 48 13% | 58 16% | 60 17% | 64 18% |
| | 2300 | 333 100% | 40 12% | 39 12% | 29 9% | 47 14% | 61 18% | 66 20% | 51 15% |
| 8/2015 | Total | 6,590 100% | 907 14% | 1,062 16% | 849 13% | 856 13% | 904 14% | 947 14% | 1,065 16% |
| | 0000 | 295 100% | 51 17% | 38 13% | 30 10% | 34 12% | 39 13% | 36 12% | 67 23% |
| | 0100 | 237 100% | 49 21% | 32 14% | 23 10% | 28 12% | 18 8% | 37 16% | 50 21% |
| | 0200 | 202 100% | 42 21% | 26 13% | 12 6% | 19 9% | 28 14% | 25 12% | 50 25% |
| | 0300 | 155 100% | 31 20% | 13 8% | 18 12% | 21 14% | 19 12% | 27 17% | 26 17% |
| | 0400 | 84 100% | 14 17% | 19 23% | 10 12% | 10 12% | 8 10% | 10 12% | 13 15% |
| | 0500 | 81 100% | 22 27% | 12 15% | 11 14% | 7 9% | 9 11% | 12 15% | 8 10% |
| | 0600 | 79 100% | 10 13% | 7 9% | 20 25% | 14 18% | 8 10% | 9 11% | 11 14% |
| | 0700 | 172 100% | 18 10% | 33 19% | 28 16% | 28 16% | 16 9% | 23 13% | 26 15% |
| | 0800 | 243 100% | 31 13% | 39 16% | 47 19% | 31 13% | 29 12% | 34 14% | 32 13% |
| | 0900 | 272 100% | 29 11% | 44 16% | 50 18% | 35 13% | 30 11% | 49 18% | 35 13% |
| | 1000 | 362 100% | 44 12% | 69 19% | 46 13% | 57 16% | 47 13% | 48 13% | 51 14% |
| | 1100 | 373 100% | 45 12% | 55 15% | 55 15% | 51 14% | 57 15% | 55 15% | 55 15% |
| | 1200 | 342 100% | 36 11% | 63 18% | 50 15% | 46 13% | 57 17% | 43 13% | 47 14% |

| | | Total | Sunday | Monday | Tuesday | Wednesday | Thursday | Friday | Saturday |
|---------------|-------------|----------|--------|--------|---------|-----------|----------|--------|----------|
| 8/2015 | 1300 | 328 100% | 30 9% | 50 15% | 44 13% | 44 13% | 63 19% | 41 13% | 56 17% |
| | 1400 | 333 100% | 33 10% | 75 23% | 42 13% | 43 13% | 47 14% | 47 14% | 46 14% |
| | 1500 | 341 100% | 33 10% | 62 18% | 41 12% | 63 18% | 52 15% | 49 14% | 41 12% |
| | 1600 | 355 100% | 53 15% | 62 17% | 43 12% | 47 13% | 45 13% | 61 17% | 44 12% |
| | 1700 | 338 100% | 45 13% | 59 17% | 34 10% | 43 13% | 55 16% | 51 15% | 51 15% |
| | 1800 | 355 100% | 51 14% | 64 18% | 45 13% | 40 11% | 42 12% | 48 14% | 65 18% |
| | 1900 | 340 100% | 48 14% | 51 15% | 39 11% | 46 14% | 51 15% | 54 16% | 51 15% |
| | 2000 | 359 100% | 66 18% | 52 14% | 51 14% | 37 10% | 49 14% | 49 14% | 55 15% |
| | 2100 | 357 100% | 39 11% | 57 16% | 42 12% | 51 14% | 57 16% | 55 15% | 56 16% |
| | 2200 | 287 100% | 45 16% | 41 14% | 30 10% | 29 10% | 34 12% | 43 15% | 65 23% |
| | 2300 | 300 100% | 42 14% | 39 13% | 38 13% | 32 11% | 44 15% | 41 14% | 64 21% |

Calls Received by Call Type by Day of Week

*NOTE: These represent the calls as initially entered with the information first received by the person calling.

| | Total | | Sun | | Mon | | Tue | | Wed | | Thu | | Fri | | Sat | |
|----------------------------|--------|------|-------|------|-------|------|-------|------|-------|------|-------|------|-------|------|-------|------|
| Total | 43,962 | 100% | 5,638 | 100% | 6,432 | 100% | 6,079 | 100% | 6,196 | 100% | 6,544 | 100% | 6,754 | 100% | 6,320 | 100% |
| | 2,658 | 6% | 305 | 5% | 380 | 6% | 418 | 7% | 373 | 6% | 419 | 6% | 411 | 6% | 352 | 6% |
| | 8 | 0% | 0 | 0% | 1 | 0% | 2 | 0% | 1 | 0% | 1 | 0% | 2 | 0% | 1 | 0% |
| 911 | 358 | 1% | 45 | 1% | 54 | 1% | 38 | 1% | 54 | 1% | 53 | 1% | 53 | 1% | 61 | 1% |
| 911 HANG UP | 171 | 0% | 21 | 0% | 21 | 0% | 26 | 0% | 22 | 0% | 16 | 0% | 34 | 1% | 31 | 0% |
| 911 MALFUNCTION | 14 | 0% | 4 | 0% | 1 | 0% | 2 | 0% | 2 | 0% | 3 | 0% | 1 | 0% | 1 | 0% |
| 911 MISUSE | 1 | 0% | 1 | 0% | 0 | 0% | 0 | 0% | 0 | 0% | 0 | 0% | 0 | 0% | 0 | 0% |
| ABANDONED VEHICLE | 45 | 0% | 1 | 0% | 7 | 0% | 8 | 0% | 7 | 0% | 10 | 0% | 11 | 0% | 1 | 0% |
| AGG BURGLARY | 2 | 0% | 1 | 0% | 0 | 0% | 0 | 0% | 0 | 0% | 0 | 0% | 0 | 0% | 1 | 0% |
| AGG MENACING | 7 | 0% | 1 | 0% | 3 | 0% | 0 | 0% | 1 | 0% | 0 | 0% | 0 | 0% | 2 | 0% |
| AGG ROBBERY | 3 | 0% | 1 | 0% | 0 | 0% | 1 | 0% | 0 | 0% | 0 | 0% | 1 | 0% | 0 | 0% |
| ALARM | 150 | 0% | 19 | 0% | 28 | 0% | 19 | 0% | 19 | 0% | 22 | 0% | 16 | 0% | 27 | 0% |
| ALARM - AUTO | 4 | 0% | 0 | 0% | 0 | 0% | 2 | 0% | 1 | 0% | 0 | 0% | 0 | 0% | 1 | 0% |
| ALARM - COMMERCIAL | 262 | 1% | 37 | 1% | 42 | 1% | 27 | 0% | 29 | 0% | 37 | 1% | 40 | 1% | 50 | 1% |
| ALARM - PANIC | 45 | 0% | 3 | 0% | 9 | 0% | 7 | 0% | 7 | 0% | 8 | 0% | 8 | 0% | 3 | 0% |
| ALARM - RESIDENTIAL | 358 | 1% | 38 | 1% | 47 | 1% | 49 | 1% | 57 | 1% | 65 | 1% | 58 | 1% | 44 | 1% |
| ALARM CANCELLED | 7 | 0% | 0 | 0% | 1 | 0% | 0 | 0% | 0 | 0% | 3 | 0% | 2 | 0% | 1 | 0% |
| ALARM DROP | 1,412 | 3% | 200 | 4% | 209 | 3% | 204 | 3% | 204 | 3% | 191 | 3% | 209 | 3% | 195 | 3% |
| ALARM- HOLD UP | 13 | 0% | 3 | 0% | 1 | 0% | 2 | 0% | 1 | 0% | 2 | 0% | 1 | 0% | 3 | 0% |
| ALARM TEST | 91 | 0% | 5 | 0% | 22 | 0% | 17 | 0% | 22 | 0% | 12 | 0% | 13 | 0% | 0 | 0% |
| ALARMS - TEST | 2 | 0% | 0 | 0% | 0 | 0% | 0 | 0% | 1 | 0% | 1 | 0% | 0 | 0% | 0 | 0% |

| | Total | | Sun | | Mon | | Tue | | Wed | | Thu | | Fri | | Sat | |
|-------------------------------------|-------|----|-----|----|-----|----|-----|----|-----|----|-----|----|-----|----|-----|----|
| ANIMAL AT LARGE | 72 | 0% | 11 | 0% | 16 | 0% | 12 | 0% | 9 | 0% | 11 | 0% | 5 | 0% | 8 | 0% |
| ANIMAL BITES | 4 | 0% | 0 | 0% | 2 | 0% | 0 | 0% | 1 | 0% | 0 | 0% | 0 | 0% | 1 | 0% |
| ANIMAL COMPLAINT | 41 | 0% | 7 | 0% | 7 | 0% | 6 | 0% | 4 | 0% | 6 | 0% | 9 | 0% | 2 | 0% |
| ANIMAL- MISC. | 603 | 1% | 102 | 2% | 97 | 2% | 72 | 1% | 69 | 1% | 67 | 1% | 91 | 1% | 105 | 2% |
| ANIMAL WARDEN DISPATC | 7 | 0% | 0 | 0% | 0 | 0% | 0 | 0% | 1 | 0% | 2 | 0% | 4 | 0% | 0 | 0% |
| ARREST ON WARRANT | 26 | 0% | 4 | 0% | 3 | 0% | 3 | 0% | 1 | 0% | 5 | 0% | 9 | 0% | 1 | 0% |
| ARSON | 1 | 0% | 0 | 0% | 0 | 0% | 0 | 0% | 0 | 0% | 1 | 0% | 0 | 0% | 0 | 0% |
| ASSAULT | 336 | 1% | 43 | 1% | 44 | 1% | 55 | 1% | 47 | 1% | 55 | 1% | 50 | 1% | 42 | 1% |
| ASSAULT JUVENILE | 2 | 0% | 0 | 0% | 0 | 0% | 0 | 0% | 0 | 0% | 2 | 0% | 0 | 0% | 0 | 0% |
| ASSIST FIRE | 15 | 0% | 2 | 0% | 3 | 0% | 1 | 0% | 3 | 0% | 3 | 0% | 3 | 0% | 0 | 0% |
| ASSIST OUTSIDE AGENCY | 70 | 0% | 10 | 0% | 7 | 0% | 13 | 0% | 18 | 0% | 6 | 0% | 11 | 0% | 5 | 0% |
| ASSIST RESCUE SQUAD | 32 | 0% | 5 | 0% | 4 | 0% | 4 | 0% | 5 | 0% | 7 | 0% | 3 | 0% | 4 | 0% |
| ASSIST W/BELONGINGS | 78 | 0% | 15 | 0% | 14 | 0% | 8 | 0% | 10 | 0% | 9 | 0% | 14 | 0% | 8 | 0% |
| ASSISTANCE GENERAL | 15 | 0% | 2 | 0% | 3 | 0% | 0 | 0% | 2 | 0% | 4 | 0% | 2 | 0% | 2 | 0% |
| ASSIST-FIRE DEPARTMENT | 2 | 0% | 0 | 0% | 0 | 0% | 1 | 0% | 0 | 0% | 0 | 0% | 1 | 0% | 0 | 0% |
| ASSIST-GENERAL | 459 | 1% | 72 | 1% | 88 | 1% | 49 | 1% | 57 | 1% | 63 | 1% | 61 | 1% | 69 | 1% |
| ASSIST-OTHER DEPT | 134 | 0% | 19 | 0% | 16 | 0% | 14 | 0% | 14 | 0% | 25 | 0% | 23 | 0% | 23 | 0% |
| ATTEMPT ARSON | 1 | 0% | 0 | 0% | 0 | 0% | 0 | 0% | 0 | 0% | 0 | 0% | 0 | 0% | 1 | 0% |
| ATTEMPT AUTO THEFT | 12 | 0% | 0 | 0% | 0 | 0% | 1 | 0% | 2 | 0% | 5 | 0% | 0 | 0% | 4 | 0% |
| ATTEMPT B & E - RESIDENC | 1 | 0% | 0 | 0% | 0 | 0% | 0 | 0% | 0 | 0% | 0 | 0% | 0 | 0% | 1 | 0% |
| ATTEMPT BREAKING & ENT | 4 | 0% | 0 | 0% | 2 | 0% | 0 | 0% | 0 | 0% | 2 | 0% | 0 | 0% | 0 | 0% |
| ATTEMPT BURGLARY | 12 | 0% | 1 | 0% | 3 | 0% | 0 | 0% | 1 | 0% | 5 | 0% | 0 | 0% | 2 | 0% |
| ATTEMPT MURDER | 3 | 0% | 1 | 0% | 0 | 0% | 0 | 0% | 0 | 0% | 0 | 0% | 0 | 0% | 2 | 0% |
| ATTEMPT SUICIDE | 2 | 0% | 0 | 0% | 0 | 0% | 0 | 0% | 0 | 0% | 1 | 0% | 0 | 0% | 1 | 0% |

| | Total | | Sun | | Mon | | Tue | | Wed | | Thu | | Fri | | Sat | |
|------------------------|-------|----|-----|----|-----|----|-----|----|-----|----|-----|----|-----|----|-----|----|
| ATTEMPT TO LOCATE | 33 | 0% | 3 | 0% | 3 | 0% | 9 | 0% | 6 | 0% | 2 | 0% | 6 | 0% | 4 | 0% |
| ATTEMPTED MURDER | 1 | 0% | 0 | 0% | 0 | 0% | 1 | 0% | 0 | 0% | 0 | 0% | 0 | 0% | 0 | 0% |
| AUTO REPO | 5 | 0% | 0 | 0% | 0 | 0% | 0 | 0% | 0 | 0% | 2 | 0% | 3 | 0% | 0 | 0% |
| AUTO TOWED | 3 | 0% | 0 | 0% | 0 | 0% | 0 | 0% | 2 | 0% | 0 | 0% | 1 | 0% | 0 | 0% |
| B&E FORCED ENTRY NON- | 9 | 0% | 3 | 0% | 1 | 0% | 1 | 0% | 0 | 0% | 1 | 0% | 1 | 0% | 2 | 0% |
| BAD CHECK | 4 | 0% | 0 | 0% | 0 | 0% | 0 | 0% | 0 | 0% | 0 | 0% | 4 | 0% | 0 | 0% |
| BARKING DOG | 34 | 0% | 8 | 0% | 4 | 0% | 3 | 0% | 5 | 0% | 8 | 0% | 3 | 0% | 3 | 0% |
| BOY/BOY TROUBLE | 3 | 0% | 0 | 0% | 0 | 0% | 2 | 0% | 1 | 0% | 0 | 0% | 0 | 0% | 0 | 0% |
| BOY/GIRL TROUBLE | 100 | 0% | 13 | 0% | 12 | 0% | 13 | 0% | 13 | 0% | 22 | 0% | 8 | 0% | 19 | 0% |
| BRANDISH/POSSES REPLIC | 1 | 0% | 0 | 0% | 0 | 0% | 0 | 0% | 0 | 0% | 1 | 0% | 0 | 0% | 0 | 0% |
| BREAKING AND ENTERING | 87 | 0% | 11 | 0% | 12 | 0% | 8 | 0% | 14 | 0% | 15 | 0% | 20 | 0% | 7 | 0% |
| BROADCAST | 30 | 0% | 6 | 0% | 4 | 0% | 4 | 0% | 0 | 0% | 5 | 0% | 6 | 0% | 5 | 0% |
| BUILDING CHECK | 76 | 0% | 11 | 0% | 13 | 0% | 9 | 0% | 7 | 0% | 12 | 0% | 7 | 0% | 17 | 0% |
| BURGLARY | 244 | 1% | 23 | 0% | 48 | 1% | 36 | 1% | 41 | 1% | 33 | 1% | 28 | 0% | 35 | 1% |
| BUSINESS CHECK | 12 | 0% | 2 | 0% | 1 | 0% | 2 | 0% | 0 | 0% | 6 | 0% | 1 | 0% | 0 | 0% |
| CALL BOX CALL | 15 | 0% | 2 | 0% | 5 | 0% | 0 | 0% | 0 | 0% | 1 | 0% | 2 | 0% | 5 | 0% |
| CANCELLED | 35 | 0% | 7 | 0% | 6 | 0% | 4 | 0% | 5 | 0% | 2 | 0% | 9 | 0% | 2 | 0% |
| CAR JACKING | 1 | 0% | 0 | 0% | 0 | 0% | 1 | 0% | 0 | 0% | 0 | 0% | 0 | 0% | 0 | 0% |
| CHILD ABUSE | 1 | 0% | 0 | 0% | 0 | 0% | 0 | 0% | 0 | 0% | 1 | 0% | 0 | 0% | 0 | 0% |
| CHILD ABUSE-REPORTED | 9 | 0% | 0 | 0% | 1 | 0% | 0 | 0% | 4 | 0% | 3 | 0% | 1 | 0% | 0 | 0% |
| CHILD ENDANGERMENT | 10 | 0% | 1 | 0% | 0 | 0% | 1 | 0% | 4 | 0% | 1 | 0% | 2 | 0% | 1 | 0% |
| CHILD ENTICEMENT | 1 | 0% | 0 | 0% | 0 | 0% | 1 | 0% | 0 | 0% | 0 | 0% | 0 | 0% | 0 | 0% |
| CIVIL MATTER | 67 | 0% | 10 | 0% | 15 | 0% | 8 | 0% | 14 | 0% | 6 | 0% | 5 | 0% | 9 | 0% |
| COMPLAINTS-GENERAL | 415 | 1% | 53 | 1% | 49 | 1% | 48 | 1% | 54 | 1% | 59 | 1% | 76 | 1% | 76 | 1% |

| | Total | | Sun | | Mon | | Tue | | Wed | | Thu | | Fri | | Sat | |
|-------------------------------|-------|----|-----|----|-----|----|-----|----|-----|----|-----|----|-----|----|-----|----|
| COMPLAINTS-JUVENILE | 571 | 1% | 81 | 1% | 86 | 1% | 91 | 1% | 81 | 1% | 83 | 1% | 90 | 1% | 59 | 1% |
| COUNTERFEIT MONEY | 10 | 0% | 2 | 0% | 1 | 0% | 1 | 0% | 2 | 0% | 1 | 0% | 1 | 0% | 2 | 0% |
| COUNTERFEITING | 19 | 0% | 2 | 0% | 3 | 0% | 3 | 0% | 3 | 0% | 3 | 0% | 3 | 0% | 2 | 0% |
| COURT | 91 | 0% | 0 | 0% | 18 | 0% | 13 | 0% | 25 | 0% | 21 | 0% | 14 | 0% | 0 | 0% |
| CRIMINAL DAMAGE | 121 | 0% | 18 | 0% | 16 | 0% | 16 | 0% | 18 | 0% | 8 | 0% | 20 | 0% | 25 | 0% |
| CRIMINAL MISCHIEF | 43 | 0% | 4 | 0% | 6 | 0% | 6 | 0% | 9 | 0% | 7 | 0% | 3 | 0% | 8 | 0% |
| CURFEW | 5 | 0% | 0 | 0% | 1 | 0% | 0 | 0% | 0 | 0% | 1 | 0% | 2 | 0% | 1 | 0% |
| CUSTODY DISPUTE | 123 | 0% | 17 | 0% | 20 | 0% | 11 | 0% | 10 | 0% | 19 | 0% | 27 | 0% | 19 | 0% |
| CUSTOMER DISPUTE | 21 | 0% | 2 | 0% | 3 | 0% | 5 | 0% | 1 | 0% | 2 | 0% | 4 | 0% | 4 | 0% |
| DAMAGE TO AUTO | 32 | 0% | 1 | 0% | 1 | 0% | 5 | 0% | 5 | 0% | 7 | 0% | 7 | 0% | 6 | 0% |
| DAMAGE TO PROPERTY | 113 | 0% | 15 | 0% | 21 | 0% | 14 | 0% | 20 | 0% | 15 | 0% | 18 | 0% | 10 | 0% |
| DAMAGE TO VEHICLE | 70 | 0% | 10 | 0% | 8 | 0% | 11 | 0% | 6 | 0% | 8 | 0% | 12 | 0% | 15 | 0% |
| DAV | 338 | 1% | 44 | 1% | 78 | 1% | 36 | 1% | 50 | 1% | 50 | 1% | 38 | 1% | 42 | 1% |
| DAV ASSIST | 1 | 0% | 0 | 0% | 1 | 0% | 0 | 0% | 0 | 0% | 0 | 0% | 0 | 0% | 0 | 0% |
| DAV PUSH | 21 | 0% | 1 | 0% | 6 | 0% | 2 | 0% | 2 | 0% | 4 | 0% | 5 | 0% | 1 | 0% |
| DEBRIS ON STREET | 55 | 0% | 3 | 0% | 8 | 0% | 8 | 0% | 9 | 0% | 13 | 0% | 5 | 0% | 9 | 0% |
| DEER KILL | 9 | 0% | 3 | 0% | 0 | 0% | 1 | 0% | 1 | 0% | 1 | 0% | 2 | 0% | 1 | 0% |
| DEPARTMENT INFORMATIO | 5 | 0% | 0 | 0% | 3 | 0% | 0 | 0% | 1 | 0% | 1 | 0% | 0 | 0% | 0 | 0% |
| DEPARTMENTAL INFORMA | 178 | 0% | 15 | 0% | 39 | 1% | 31 | 1% | 23 | 0% | 24 | 0% | 32 | 0% | 14 | 0% |
| DETAIL | 1,139 | 3% | 116 | 2% | 152 | 2% | 205 | 3% | 166 | 3% | 204 | 3% | 174 | 3% | 122 | 2% |
| DISABLED MOTOR VEHICLE | 314 | 1% | 41 | 1% | 39 | 1% | 39 | 1% | 49 | 1% | 48 | 1% | 53 | 1% | 45 | 1% |
| DISORDERLY | 61 | 0% | 10 | 0% | 11 | 0% | 7 | 0% | 6 | 0% | 5 | 0% | 13 | 0% | 9 | 0% |
| DISORDERLY CONDUCT | 18 | 0% | 5 | 0% | 2 | 0% | 4 | 0% | 3 | 0% | 1 | 0% | 1 | 0% | 2 | 0% |
| DISTURBANCE | 1,249 | 3% | 192 | 3% | 165 | 3% | 165 | 3% | 149 | 2% | 192 | 3% | 177 | 3% | 209 | 3% |

| | Total | | Sun | | Mon | | Tue | | Wed | | Thu | | Fri | | Sat | |
|-------------------------------|-------|----|-----|----|-----|----|-----|----|-----|----|-----|----|-----|----|-----|----|
| DOA | 22 | 0% | 0 | 0% | 5 | 0% | 5 | 0% | 2 | 0% | 5 | 0% | 2 | 0% | 3 | 0% |
| DOA AND BODY FOUND | 13 | 0% | 2 | 0% | 0 | 0% | 2 | 0% | 3 | 0% | 3 | 0% | 2 | 0% | 1 | 0% |
| DOMESTIC | 282 | 1% | 57 | 1% | 37 | 1% | 34 | 1% | 32 | 1% | 29 | 0% | 47 | 1% | 46 | 1% |
| DOMESTIC DISPUTE | 19 | 0% | 1 | 0% | 4 | 0% | 6 | 0% | 2 | 0% | 1 | 0% | 2 | 0% | 3 | 0% |
| DOMESTIC VIOLENCE | 50 | 0% | 9 | 0% | 7 | 0% | 4 | 0% | 4 | 0% | 7 | 0% | 12 | 0% | 7 | 0% |
| DRUG ABUSE | 5 | 0% | 1 | 0% | 0 | 0% | 0 | 0% | 0 | 0% | 1 | 0% | 2 | 0% | 1 | 0% |
| DRUG ARREST | 73 | 0% | 7 | 0% | 6 | 0% | 8 | 0% | 7 | 0% | 8 | 0% | 22 | 0% | 15 | 0% |
| DRUG BUY | 9 | 0% | 0 | 0% | 0 | 0% | 3 | 0% | 3 | 0% | 2 | 0% | 1 | 0% | 0 | 0% |
| DRUG INVESTIGATION | 70 | 0% | 2 | 0% | 12 | 0% | 22 | 0% | 19 | 0% | 7 | 0% | 6 | 0% | 2 | 0% |
| DRUG POSSESSION | 3 | 0% | 0 | 0% | 1 | 0% | 0 | 0% | 1 | 0% | 0 | 0% | 1 | 0% | 0 | 0% |
| DRUG TRAFFICKING | 2 | 0% | 0 | 0% | 0 | 0% | 0 | 0% | 1 | 0% | 0 | 0% | 0 | 0% | 1 | 0% |
| DUI | 20 | 0% | 2 | 0% | 2 | 0% | 2 | 0% | 0 | 0% | 3 | 0% | 6 | 0% | 5 | 0% |
| DUS | 2 | 0% | 0 | 0% | 1 | 0% | 0 | 0% | 0 | 0% | 0 | 0% | 0 | 0% | 1 | 0% |
| EQUIPMENT FAILURE/MALF | 3 | 0% | 0 | 0% | 3 | 0% | 0 | 0% | 0 | 0% | 0 | 0% | 0 | 0% | 0 | 0% |
| ERRANDS | 3 | 0% | 0 | 0% | 1 | 0% | 0 | 0% | 0 | 0% | 0 | 0% | 2 | 0% | 0 | 0% |
| ERRATIC DRIVER | 165 | 0% | 28 | 0% | 11 | 0% | 8 | 0% | 27 | 0% | 27 | 0% | 26 | 0% | 38 | 1% |
| ESCORT | 23 | 0% | 3 | 0% | 1 | 0% | 2 | 0% | 5 | 0% | 5 | 0% | 2 | 0% | 5 | 0% |
| EXECUTION OF SEARCH W | 9 | 0% | 0 | 0% | 0 | 0% | 0 | 0% | 0 | 0% | 2 | 0% | 7 | 0% | 0 | 0% |
| FALSIFICATION | 2 | 0% | 1 | 0% | 0 | 0% | 0 | 0% | 0 | 0% | 1 | 0% | 0 | 0% | 0 | 0% |
| FAMILY DISTURBANCE | 1 | 0% | 0 | 0% | 0 | 0% | 0 | 0% | 0 | 0% | 0 | 0% | 1 | 0% | 0 | 0% |
| FAMILY TROUBLE | 270 | 1% | 55 | 1% | 38 | 1% | 31 | 1% | 27 | 0% | 38 | 1% | 29 | 0% | 52 | 1% |
| FELONIOUS ASSAULT | 2 | 0% | 0 | 0% | 0 | 0% | 1 | 0% | 0 | 0% | 0 | 0% | 1 | 0% | 0 | 0% |
| FIGHT | 24 | 0% | 1 | 0% | 2 | 0% | 5 | 0% | 5 | 0% | 6 | 0% | 3 | 0% | 2 | 0% |
| FIGHT- DISTURBANCE | 204 | 0% | 27 | 0% | 25 | 0% | 34 | 1% | 24 | 0% | 26 | 0% | 34 | 1% | 34 | 1% |

| | Total | Sun | Mon | Tue | Wed | Thu | Fri | Sat |
|----------------------------------|--------|-------|-------|-------|-------|-------|-------|-------|
| FIRE CALL-CARBON MON-I | 9 0% | 3 0% | 2 0% | 1 0% | 0 0% | 0 0% | 1 0% | 2 0% |
| FIRE CALL-CARBON MONO | 41 0% | 10 0% | 8 0% | 5 0% | 2 0% | 3 0% | 4 0% | 9 0% |
| FIRE CALL-COOKING | 14 0% | 4 0% | 1 0% | 1 0% | 0 0% | 1 0% | 2 0% | 5 0% |
| FIRE CALL-ELEVATOR RES | 50 0% | 10 0% | 4 0% | 4 0% | 8 0% | 8 0% | 8 0% | 8 0% |
| FIRE CALL-FIRE ALARM | 210 0% | 37 1% | 36 1% | 28 0% | 25 0% | 28 0% | 29 0% | 27 0% |
| FIRE CALL-GENERAL | 83 0% | 19 0% | 11 0% | 13 0% | 10 0% | 9 0% | 11 0% | 10 0% |
| FIRE CALL-GRASS | 6 0% | 2 0% | 1 0% | 0 0% | 1 0% | 0 0% | 1 0% | 1 0% |
| FIRE CALL-HAZMAT | 3 0% | 0 0% | 1 0% | 1 0% | 0 0% | 0 0% | 1 0% | 0 0% |
| FIRE CALL-MUTUAL AID | 7 0% | 1 0% | 1 0% | 3 0% | 0 0% | 0 0% | 0 0% | 2 0% |
| FIRE CALL-ODOR INV/INSID | 44 0% | 6 0% | 6 0% | 6 0% | 8 0% | 6 0% | 6 0% | 6 0% |
| FIRE CALL-ODOR INV/OUTS | 28 0% | 3 0% | 5 0% | 4 0% | 5 0% | 1 0% | 6 0% | 4 0% |
| FIRE CALL-STRUCTURE FIR | 29 0% | 4 0% | 2 0% | 6 0% | 6 0% | 3 0% | 2 0% | 6 0% |
| FIRE CALL-UTILITIES | 43 0% | 7 0% | 11 0% | 11 0% | 4 0% | 5 0% | 3 0% | 2 0% |
| FIRE CALL-VEH FIRE/INSIDE | 1 0% | 0 0% | 1 0% | 0 0% | 0 0% | 0 0% | 0 0% | 0 0% |
| FIRE CALL-VEH FIRE/OUTS | 11 0% | 2 0% | 1 0% | 3 0% | 0 0% | 2 0% | 2 0% | 1 0% |
| FIREWORKS COMPLAINT | 6 0% | 1 0% | 0 0% | 0 0% | 3 0% | 0 0% | 1 0% | 1 0% |
| FOLLOW UP | 97 0% | 15 0% | 15 0% | 12 0% | 9 0% | 16 0% | 22 0% | 8 0% |
| FOLLOW UP INVESTIGATIO | 269 1% | 34 1% | 50 1% | 37 1% | 39 1% | 38 1% | 37 1% | 34 1% |
| FOOT PATROL | 1 0% | 0 0% | 0 0% | 0 0% | 0 0% | 1 0% | 0 0% | 0 0% |
| FRAUD | 195 0% | 8 0% | 40 1% | 25 0% | 29 0% | 39 1% | 37 1% | 17 0% |
| FUEL | 2 0% | 0 0% | 0 0% | 0 0% | 1 0% | 1 0% | 0 0% | 0 0% |
| GENERAL ASSISTANCE | 58 0% | 11 0% | 4 0% | 2 0% | 12 0% | 9 0% | 8 0% | 12 0% |
| GIRL/GIRL TROUBLE | 1 0% | 1 0% | 0 0% | 0 0% | 0 0% | 0 0% | 0 0% | 0 0% |
| GREEN CONDITION | 94 0% | 13 0% | 7 0% | 11 0% | 13 0% | 19 0% | 11 0% | 20 0% |

| | Total | Sun | Mon | Tue | Wed | Thu | Fri | Sat |
|------------------------|--------|-------|--------|--------|--------|--------|--------|--------|
| GUARDIAN CALL - WELFAR | 4 0% | 3 0% | 0 0% | 0 0% | 0 0% | 0 0% | 1 0% | 0 0% |
| HARASSING PHONE CALLS | 42 0% | 6 0% | 8 0% | 6 0% | 4 0% | 5 0% | 10 0% | 3 0% |
| HARASSING-COMMUNICAT | 158 0% | 14 0% | 27 0% | 30 0% | 27 0% | 28 0% | 17 0% | 15 0% |
| HARASSMENT | 42 0% | 6 0% | 9 0% | 7 0% | 8 0% | 5 0% | 4 0% | 3 0% |
| HIGH WATER | 1 0% | 0 0% | 0 0% | 0 0% | 0 0% | 0 0% | 0 0% | 1 0% |
| HIT CONFIRMATION | 918 2% | 93 2% | 128 2% | 143 2% | 152 2% | 151 2% | 128 2% | 123 2% |
| HITCH-HIKING | 1 0% | 0 0% | 0 0% | 0 0% | 0 0% | 0 0% | 0 0% | 1 0% |
| HOUSE WATCH | 52 0% | 4 0% | 6 0% | 7 0% | 9 0% | 11 0% | 9 0% | 6 0% |
| IDENTITY THEFT | 79 0% | 2 0% | 13 0% | 14 0% | 14 0% | 10 0% | 21 0% | 5 0% |
| ILLEGAL DUMPING | 9 0% | 2 0% | 0 0% | 0 0% | 2 0% | 0 0% | 5 0% | 0 0% |
| INDECENT EXPOSURE | 3 0% | 0 0% | 0 0% | 2 0% | 0 0% | 1 0% | 0 0% | 0 0% |
| INDUCING PANIC | 1 0% | 0 0% | 0 0% | 0 0% | 0 0% | 1 0% | 0 0% | 0 0% |
| INJURY TO OFFICER | 6 0% | 1 0% | 0 0% | 1 0% | 1 0% | 1 0% | 1 0% | 1 0% |
| INJURY TO PERSON | 8 0% | 1 0% | 4 0% | 1 0% | 2 0% | 0 0% | 0 0% | 0 0% |
| INSPECTIONS | 1 0% | 0 0% | 0 0% | 0 0% | 0 0% | 0 0% | 1 0% | 0 0% |
| INTOXICATION | 10 0% | 2 0% | 2 0% | 1 0% | 0 0% | 2 0% | 1 0% | 2 0% |
| JAIL | 1 0% | 1 0% | 0 0% | 0 0% | 0 0% | 0 0% | 0 0% | 0 0% |
| JUNK | 1 0% | 0 0% | 0 0% | 0 0% | 0 0% | 0 0% | 1 0% | 0 0% |
| JUVENILE ANNOYING | 73 0% | 9 0% | 8 0% | 12 0% | 13 0% | 12 0% | 12 0% | 7 0% |
| JUVENILE DELINQUENT | 1 0% | 0 0% | 1 0% | 0 0% | 0 0% | 0 0% | 0 0% | 0 0% |
| JUVENILE DIVERSION | 13 0% | 1 0% | 1 0% | 1 0% | 4 0% | 4 0% | 2 0% | 0 0% |
| JUVENILE UNRULY | 10 0% | 1 0% | 2 0% | 4 0% | 1 0% | 1 0% | 1 0% | 0 0% |
| JUVENILE-RUNAWAY | 20 0% | 3 0% | 1 0% | 2 0% | 1 0% | 4 0% | 8 0% | 1 0% |
| K9-CALL OUT | 2 0% | 0 0% | 0 0% | 0 0% | 0 0% | 1 0% | 1 0% | 0 0% |

| | Total | | Sun | | Mon | | Tue | | Wed | | Thu | | Fri | | Sat | |
|-----------------------|-------|----|-----|----|-----|----|-----|----|-----|----|-----|----|-----|----|-----|----|
| LANDLORD TENNANT DISP | 8 | 0% | 1 | 0% | 3 | 0% | 0 | 0% | 1 | 0% | 1 | 0% | 1 | 0% | 1 | 0% |
| LAST OUT | 83 | 0% | 7 | 0% | 15 | 0% | 17 | 0% | 23 | 0% | 7 | 0% | 9 | 0% | 5 | 0% |
| LEADS - ENTRY | 3,169 | 7% | 327 | 6% | 450 | 7% | 533 | 9% | 505 | 8% | 491 | 8% | 424 | 6% | 439 | 7% |
| LEADS - REMOVAL | 1,319 | 3% | 73 | 1% | 240 | 4% | 240 | 4% | 221 | 4% | 233 | 4% | 190 | 3% | 122 | 2% |
| LINES DOWN | 7 | 0% | 0 | 0% | 2 | 0% | 2 | 0% | 2 | 0% | 1 | 0% | 0 | 0% | 0 | 0% |
| LOCATE FOR OWNER | 4 | 0% | 0 | 0% | 0 | 0% | 1 | 0% | 1 | 0% | 0 | 0% | 2 | 0% | 0 | 0% |
| LOCK-OUT HOUSE | 32 | 0% | 7 | 0% | 7 | 0% | 3 | 0% | 4 | 0% | 5 | 0% | 4 | 0% | 2 | 0% |
| LOCKOUT RESIDENCE | 1 | 0% | 0 | 0% | 0 | 0% | 1 | 0% | 0 | 0% | 0 | 0% | 0 | 0% | 0 | 0% |
| LOCKOUT VEHICLE | 458 | 1% | 57 | 1% | 67 | 1% | 55 | 1% | 57 | 1% | 81 | 1% | 73 | 1% | 68 | 1% |
| LOCK-OUT VEHICLE | 690 | 2% | 89 | 2% | 101 | 2% | 97 | 2% | 78 | 1% | 108 | 2% | 111 | 2% | 106 | 2% |
| LOST PROPERTY | 20 | 0% | 0 | 0% | 5 | 0% | 4 | 0% | 6 | 0% | 2 | 0% | 2 | 0% | 1 | 0% |
| LOUD MUSIC | 93 | 0% | 22 | 0% | 12 | 0% | 6 | 0% | 6 | 0% | 12 | 0% | 14 | 0% | 21 | 0% |
| LUNCH/OFFICER | 248 | 1% | 26 | 0% | 42 | 1% | 40 | 1% | 33 | 1% | 42 | 1% | 45 | 1% | 20 | 0% |
| MENACING | 8 | 0% | 3 | 0% | 1 | 0% | 0 | 0% | 3 | 0% | 0 | 0% | 1 | 0% | 0 | 0% |
| MENTAL PERSON | 3 | 0% | 2 | 0% | 0 | 0% | 1 | 0% | 0 | 0% | 0 | 0% | 0 | 0% | 0 | 0% |
| MISC | 14 | 0% | 2 | 0% | 3 | 0% | 1 | 0% | 3 | 0% | 2 | 0% | 1 | 0% | 2 | 0% |
| MISSING JUVENILE | 201 | 0% | 29 | 1% | 29 | 0% | 25 | 0% | 28 | 0% | 30 | 0% | 32 | 0% | 28 | 0% |
| MISSING PERSON | 46 | 0% | 6 | 0% | 9 | 0% | 7 | 0% | 4 | 0% | 8 | 0% | 4 | 0% | 8 | 0% |
| MUTUAL AID GIVEN | 1 | 0% | 0 | 0% | 1 | 0% | 0 | 0% | 0 | 0% | 0 | 0% | 0 | 0% | 0 | 0% |
| MUTUAL AID REQUESTED | 2 | 0% | 1 | 0% | 1 | 0% | 0 | 0% | 0 | 0% | 0 | 0% | 0 | 0% | 0 | 0% |
| MUTUAL AID, GIVEN | 16 | 0% | 3 | 0% | 2 | 0% | 2 | 0% | 2 | 0% | 5 | 0% | 2 | 0% | 0 | 0% |
| MUTUAL AID, REQUESTED | 13 | 0% | 3 | 0% | 3 | 0% | 1 | 0% | 2 | 0% | 3 | 0% | 0 | 0% | 1 | 0% |
| MVA | 793 | 2% | 90 | 2% | 125 | 2% | 105 | 2% | 127 | 2% | 113 | 2% | 121 | 2% | 112 | 2% |
| MVA - DEER | 9 | 0% | 0 | 0% | 1 | 0% | 1 | 0% | 2 | 0% | 3 | 0% | 0 | 0% | 2 | 0% |

| | Total | | Sun | | Mon | | Tue | | Wed | | Thu | | Fri | | Sat | |
|--------------------------------|-------|----|-----|----|-----|----|-----|----|-----|----|-----|----|-----|----|-----|----|
| MVA - HIT SKIP | 91 | 0% | 13 | 0% | 12 | 0% | 10 | 0% | 15 | 0% | 14 | 0% | 17 | 0% | 10 | 0% |
| MVA - INJURY | 22 | 0% | 3 | 0% | 4 | 0% | 2 | 0% | 3 | 0% | 5 | 0% | 1 | 0% | 4 | 0% |
| MVA HIT SKIP | 65 | 0% | 7 | 0% | 14 | 0% | 11 | 0% | 11 | 0% | 6 | 0% | 9 | 0% | 7 | 0% |
| MVA PEDESTRIAN | 3 | 0% | 0 | 0% | 2 | 0% | 0 | 0% | 1 | 0% | 0 | 0% | 0 | 0% | 0 | 0% |
| MVA PRIVATE PROPERTY | 66 | 0% | 8 | 0% | 13 | 0% | 7 | 0% | 10 | 0% | 9 | 0% | 7 | 0% | 12 | 0% |
| MVA-PEDESTRIAN | 9 | 0% | 0 | 0% | 3 | 0% | 1 | 0% | 2 | 0% | 1 | 0% | 1 | 0% | 1 | 0% |
| MVA-PRIVATE PROPERTY | 93 | 0% | 9 | 0% | 23 | 0% | 6 | 0% | 10 | 0% | 10 | 0% | 18 | 0% | 17 | 0% |
| NEIGHBOR TROUBLE | 140 | 0% | 15 | 0% | 27 | 0% | 17 | 0% | 28 | 0% | 15 | 0% | 18 | 0% | 20 | 0% |
| NOISE COMPLAINT | 800 | 2% | 177 | 3% | 79 | 1% | 76 | 1% | 61 | 1% | 79 | 1% | 122 | 2% | 206 | 3% |
| NOISE DISTURBANCE | 118 | 0% | 28 | 0% | 12 | 0% | 15 | 0% | 12 | 0% | 7 | 0% | 9 | 0% | 35 | 1% |
| NON SUFFICIENT FUNDS CH | 1 | 0% | 0 | 0% | 0 | 0% | 0 | 0% | 1 | 0% | 0 | 0% | 0 | 0% | 0 | 0% |
| NOTIFICATION | 218 | 0% | 21 | 0% | 27 | 0% | 28 | 0% | 43 | 1% | 28 | 0% | 38 | 1% | 33 | 1% |
| OBSTRUCTING OFFICIAL B | 1 | 0% | 0 | 0% | 0 | 0% | 1 | 0% | 0 | 0% | 0 | 0% | 0 | 0% | 0 | 0% |
| OFF DUTY DETAIL | 278 | 1% | 11 | 0% | 53 | 1% | 43 | 1% | 33 | 1% | 26 | 0% | 57 | 1% | 55 | 1% |
| ON THE AIR | 5 | 0% | 0 | 0% | 0 | 0% | 0 | 0% | 3 | 0% | 1 | 0% | 1 | 0% | 0 | 0% |
| OPEN BUILDING | 12 | 0% | 1 | 0% | 4 | 0% | 1 | 0% | 2 | 0% | 1 | 0% | 3 | 0% | 0 | 0% |
| OPEN BURNING | 16 | 0% | 3 | 0% | 3 | 0% | 2 | 0% | 3 | 0% | 1 | 0% | 4 | 0% | 0 | 0% |
| OPEN CONTAINER | 10 | 0% | 1 | 0% | 0 | 0% | 1 | 0% | 2 | 0% | 0 | 0% | 4 | 0% | 2 | 0% |
| OPEN DOOR | 88 | 0% | 17 | 0% | 13 | 0% | 13 | 0% | 5 | 0% | 8 | 0% | 12 | 0% | 20 | 0% |
| OUT OF THE VILLAGE | 1 | 0% | 0 | 0% | 0 | 0% | 0 | 0% | 0 | 0% | 1 | 0% | 0 | 0% | 0 | 0% |
| OVERDOSE | 36 | 0% | 3 | 0% | 4 | 0% | 5 | 0% | 3 | 0% | 6 | 0% | 6 | 0% | 9 | 0% |
| PANHANDLER | 26 | 0% | 4 | 0% | 3 | 0% | 2 | 0% | 4 | 0% | 7 | 0% | 3 | 0% | 3 | 0% |
| PARKING COMPLAINT | 489 | 1% | 70 | 1% | 63 | 1% | 63 | 1% | 71 | 1% | 74 | 1% | 67 | 1% | 81 | 1% |
| PARKING PERMISSION | 1,242 | 3% | 234 | 4% | 149 | 2% | 127 | 2% | 153 | 2% | 166 | 3% | 187 | 3% | 226 | 4% |

| | Total | | Sun | | Mon | | Tue | | Wed | | Thu | | Fri | | Sat | |
|-------------------------------|-------|----|-----|----|-----|----|-----|----|-----|----|-----|----|-----|----|-----|----|
| PARKING VIOLATION | 386 | 1% | 58 | 1% | 57 | 1% | 54 | 1% | 54 | 1% | 49 | 1% | 52 | 1% | 62 | 1% |
| PEDESTRIAN ON FREEWAY | 3 | 0% | 2 | 0% | 0 | 0% | 1 | 0% | 0 | 0% | 0 | 0% | 0 | 0% | 0 | 0% |
| PHONE CALLS ANNOYING | 1 | 0% | 0 | 0% | 1 | 0% | 0 | 0% | 0 | 0% | 0 | 0% | 0 | 0% | 0 | 0% |
| PHONE CALLS THREATENIN | 6 | 0% | 1 | 0% | 1 | 0% | 0 | 0% | 1 | 0% | 1 | 0% | 2 | 0% | 0 | 0% |
| PHONE MESSAGE | 342 | 1% | 33 | 1% | 54 | 1% | 47 | 1% | 52 | 1% | 62 | 1% | 52 | 1% | 42 | 1% |
| PORTABLE | 2 | 0% | 0 | 0% | 0 | 0% | 1 | 0% | 0 | 0% | 0 | 0% | 0 | 0% | 1 | 0% |
| POWER OUTAGE | 1 | 0% | 0 | 0% | 0 | 0% | 0 | 0% | 0 | 0% | 0 | 0% | 1 | 0% | 0 | 0% |
| PREMISE CHECK | 11 | 0% | 1 | 0% | 3 | 0% | 3 | 0% | 1 | 0% | 0 | 0% | 3 | 0% | 0 | 0% |
| PRINT AGENCY LOGS | 18 | 0% | 2 | 0% | 3 | 0% | 1 | 0% | 2 | 0% | 3 | 0% | 4 | 0% | 3 | 0% |
| PRISONER PICK UP | 45 | 0% | 2 | 0% | 11 | 0% | 9 | 0% | 4 | 0% | 5 | 0% | 5 | 0% | 9 | 0% |
| PRISONER RELEASE | 1 | 0% | 0 | 0% | 0 | 0% | 1 | 0% | 0 | 0% | 0 | 0% | 0 | 0% | 0 | 0% |
| PRISONER TRANSPORT | 13 | 0% | 3 | 0% | 1 | 0% | 2 | 0% | 2 | 0% | 3 | 0% | 1 | 0% | 1 | 0% |
| PROBATE | 1 | 0% | 0 | 0% | 0 | 0% | 0 | 0% | 0 | 0% | 0 | 0% | 1 | 0% | 0 | 0% |
| PROPERTY - FOUND | 121 | 0% | 19 | 0% | 16 | 0% | 10 | 0% | 22 | 0% | 24 | 0% | 15 | 0% | 15 | 0% |
| PROPERTY - LOST | 42 | 0% | 2 | 0% | 8 | 0% | 9 | 0% | 6 | 0% | 11 | 0% | 1 | 0% | 5 | 0% |
| PROPERTY DAMAGE | 37 | 0% | 7 | 0% | 4 | 0% | 1 | 0% | 8 | 0% | 5 | 0% | 6 | 0% | 6 | 0% |
| PROPERTY FOUND | 47 | 0% | 8 | 0% | 8 | 0% | 7 | 0% | 4 | 0% | 8 | 0% | 5 | 0% | 7 | 0% |
| PROTECTION ORDER VIOLA | 15 | 0% | 1 | 0% | 4 | 0% | 3 | 0% | 3 | 0% | 0 | 0% | 3 | 0% | 1 | 0% |
| PSYCHIATRIC SITUATION | 22 | 0% | 4 | 0% | 2 | 0% | 4 | 0% | 5 | 0% | 3 | 0% | 2 | 0% | 2 | 0% |
| PURSUIT | 26 | 0% | 1 | 0% | 3 | 0% | 1 | 0% | 2 | 0% | 5 | 0% | 6 | 0% | 8 | 0% |
| PUSH - DISABLED AUTO | 5 | 0% | 1 | 0% | 2 | 0% | 1 | 0% | 1 | 0% | 0 | 0% | 0 | 0% | 0 | 0% |
| RACING AUTO | 7 | 0% | 4 | 0% | 0 | 0% | 1 | 0% | 1 | 0% | 0 | 0% | 0 | 0% | 1 | 0% |
| RANGE | 5 | 0% | 2 | 0% | 0 | 0% | 0 | 0% | 0 | 0% | 1 | 0% | 1 | 0% | 1 | 0% |
| RAPE | 11 | 0% | 0 | 0% | 0 | 0% | 5 | 0% | 1 | 0% | 2 | 0% | 2 | 0% | 1 | 0% |

| | Total | Sun | Mon | Tue | Wed | Thu | Fri | Sat |
|------------------------|--------|-------|-------|-------|-------|-------|-------|-------|
| RECEIVE STOLEN PROPER | 6 0% | 0 0% | 1 0% | 2 0% | 0 0% | 2 0% | 0 0% | 1 0% |
| RECEIVING STOLEN PROPE | 3 0% | 1 0% | 0 0% | 0 0% | 1 0% | 0 0% | 1 0% | 0 0% |
| RECORD CHECKS | 152 0% | 7 0% | 28 0% | 36 1% | 31 1% | 20 0% | 13 0% | 17 0% |
| RECOVERED AUTO | 2 0% | 0 0% | 0 0% | 0 0% | 0 0% | 1 0% | 1 0% | 0 0% |
| RECOVERED PROPERTY | 10 0% | 0 0% | 4 0% | 2 0% | 1 0% | 2 0% | 1 0% | 0 0% |
| RECOVERED STOLEN VEH | 1 0% | 0 0% | 1 0% | 0 0% | 0 0% | 0 0% | 0 0% | 0 0% |
| REGISTRATION CHECK | 84 0% | 2 0% | 12 0% | 17 0% | 15 0% | 24 0% | 9 0% | 5 0% |
| REPOSSESSION | 353 1% | 31 1% | 31 0% | 51 1% | 76 1% | 68 1% | 53 1% | 43 1% |
| RESISTING AN OFFICER | 1 0% | 0 0% | 0 0% | 0 0% | 0 0% | 1 0% | 0 0% | 0 0% |
| ROAD CLOSED | 7 0% | 0 0% | 1 0% | 0 0% | 1 0% | 1 0% | 3 0% | 1 0% |
| ROAD HAZARD | 61 0% | 7 0% | 11 0% | 10 0% | 10 0% | 7 0% | 9 0% | 7 0% |
| ROBBERY | 57 0% | 12 0% | 5 0% | 9 0% | 6 0% | 12 0% | 8 0% | 5 0% |
| ROLL CALL | 2 0% | 0 0% | 0 0% | 0 0% | 1 0% | 0 0% | 0 0% | 1 0% |
| RUNAWAY JUVENILE | 11 0% | 0 0% | 4 0% | 1 0% | 4 0% | 1 0% | 1 0% | 0 0% |
| SCAVENGING | 4 0% | 1 0% | 0 0% | 0 0% | 0 0% | 0 0% | 2 0% | 1 0% |
| SCHOOL DETAIL | 1 0% | 0 0% | 1 0% | 0 0% | 0 0% | 0 0% | 0 0% | 0 0% |
| SEARCH WARRANT | 15 0% | 0 0% | 3 0% | 1 0% | 0 0% | 4 0% | 7 0% | 0 0% |
| SERVING CITATION | 1 0% | 1 0% | 0 0% | 0 0% | 0 0% | 0 0% | 0 0% | 0 0% |
| SEX OFFENSE | 14 0% | 3 0% | 0 0% | 2 0% | 2 0% | 1 0% | 6 0% | 0 0% |
| SEXUAL ASSAULT | 4 0% | 1 0% | 0 0% | 0 0% | 1 0% | 0 0% | 2 0% | 0 0% |
| SEXUAL IMPOSITION | 4 0% | 0 0% | 1 0% | 2 0% | 0 0% | 0 0% | 1 0% | 0 0% |
| SHIFT CALL IN | 245 1% | 36 1% | 43 1% | 36 1% | 34 1% | 30 0% | 39 1% | 27 0% |
| SHOPLIFTER | 37 0% | 3 0% | 5 0% | 11 0% | 9 0% | 4 0% | 2 0% | 3 0% |
| SHOPLIFTING | 66 0% | 7 0% | 14 0% | 9 0% | 6 0% | 16 0% | 8 0% | 6 0% |

| | Total | | Sun | | Mon | | Tue | | Wed | | Thu | | Fri | | Sat | |
|---------------------------------|-------|----|-----|----|-----|----|-----|----|-----|----|-----|----|-----|----|-----|----|
| SHOTS FIRED | 131 | 0% | 18 | 0% | 17 | 0% | 12 | 0% | 12 | 0% | 29 | 0% | 18 | 0% | 25 | 0% |
| SOLICITING | 27 | 0% | 6 | 0% | 5 | 0% | 3 | 0% | 1 | 0% | 6 | 0% | 4 | 0% | 2 | 0% |
| SOLICITORS | 10 | 0% | 0 | 0% | 2 | 0% | 0 | 0% | 2 | 0% | 2 | 0% | 3 | 0% | 1 | 0% |
| SPECIAL ATTENTION | 803 | 2% | 67 | 1% | 107 | 2% | 112 | 2% | 140 | 2% | 158 | 2% | 114 | 2% | 105 | 2% |
| SPECIAL ATTENTION CHEC | 249 | 1% | 19 | 0% | 43 | 1% | 39 | 1% | 27 | 0% | 44 | 1% | 53 | 1% | 24 | 0% |
| SQUAD CALL-1-GENERAL-B | 1,550 | 4% | 204 | 4% | 249 | 4% | 205 | 3% | 222 | 4% | 218 | 3% | 228 | 3% | 224 | 4% |
| SQUAD CALL-2-GENERAL-A | 1,237 | 3% | 182 | 3% | 207 | 3% | 148 | 2% | 169 | 3% | 185 | 3% | 196 | 3% | 150 | 2% |
| SQUAD CALL-3-LIFT ASSIST | 140 | 0% | 23 | 0% | 13 | 0% | 21 | 0% | 21 | 0% | 24 | 0% | 18 | 0% | 20 | 0% |
| SQUAD CALL-4-MUTUAL AI | 8 | 0% | 3 | 0% | 1 | 0% | 0 | 0% | 1 | 0% | 1 | 0% | 2 | 0% | 0 | 0% |
| SQUAD CALL-5-MVA | 29 | 0% | 4 | 0% | 6 | 0% | 4 | 0% | 3 | 0% | 1 | 0% | 6 | 0% | 5 | 0% |
| SQUAD CALL-6-FULL ARRE | 6 | 0% | 1 | 0% | 0 | 0% | 2 | 0% | 0 | 0% | 0 | 0% | 2 | 0% | 1 | 0% |
| SQUAD CALL-7-CHOKING | 4 | 0% | 2 | 0% | 0 | 0% | 0 | 0% | 0 | 0% | 0 | 0% | 1 | 0% | 1 | 0% |
| STATION | 27 | 0% | 0 | 0% | 4 | 0% | 10 | 0% | 2 | 0% | 1 | 0% | 7 | 0% | 3 | 0% |
| STATION HOUSE REPORT | 72 | 0% | 1 | 0% | 15 | 0% | 10 | 0% | 18 | 0% | 8 | 0% | 11 | 0% | 9 | 0% |
| STOLEN AUTO | 42 | 0% | 7 | 0% | 4 | 0% | 8 | 0% | 5 | 0% | 6 | 0% | 8 | 0% | 4 | 0% |
| STOLEN AUTO RECOVERY | 12 | 0% | 2 | 0% | 1 | 0% | 2 | 0% | 2 | 0% | 1 | 0% | 3 | 0% | 1 | 0% |
| STOLEN PLATES | 13 | 0% | 4 | 0% | 1 | 0% | 2 | 0% | 0 | 0% | 2 | 0% | 3 | 0% | 1 | 0% |
| STOLEN PROPERTY | 5 | 0% | 0 | 0% | 1 | 0% | 0 | 0% | 2 | 0% | 1 | 0% | 1 | 0% | 0 | 0% |
| STOLEN VEHICLE | 130 | 0% | 19 | 0% | 16 | 0% | 13 | 0% | 25 | 0% | 24 | 0% | 16 | 0% | 17 | 0% |
| SUBJECT CHECK | 51 | 0% | 6 | 0% | 7 | 0% | 4 | 0% | 6 | 0% | 11 | 0% | 10 | 0% | 7 | 0% |
| SUBPOENA | 85 | 0% | 0 | 0% | 14 | 0% | 10 | 0% | 3 | 0% | 9 | 0% | 49 | 1% | 0 | 0% |
| SUBPOENAS SERVED | 1 | 0% | 0 | 0% | 0 | 0% | 0 | 0% | 0 | 0% | 1 | 0% | 0 | 0% | 0 | 0% |
| SUICIDAL PERSON | 38 | 0% | 7 | 0% | 5 | 0% | 5 | 0% | 6 | 0% | 5 | 0% | 4 | 0% | 6 | 0% |
| SUICIDE/SUICIDAL | 75 | 0% | 7 | 0% | 13 | 0% | 12 | 0% | 10 | 0% | 9 | 0% | 14 | 0% | 10 | 0% |

| | Total | | Sun | | Mon | | Tue | | Wed | | Thu | | Fri | | Sat | |
|-------------------------------|-------|----|-----|----|-----|----|-----|----|-----|----|-----|----|-----|----|-----|-----|
| SUSPICION | 1,364 | 3% | 196 | 3% | 185 | 3% | 197 | 3% | 173 | 3% | 184 | 3% | 227 | 3% | 202 | 3% |
| SUSPICIOUS ACTIVITY | 276 | 1% | 30 | 1% | 32 | 0% | 53 | 1% | 51 | 1% | 49 | 1% | 34 | 1% | 27 | 0% |
| SUSPICIOUS PACKAGE | 2 | 0% | 0 | 0% | 0 | 0% | 0 | 0% | 0 | 0% | 1 | 0% | 1 | 0% | 0 | 0% |
| SUSPICIOUS PERSON | 56 | 0% | 6 | 0% | 8 | 0% | 9 | 0% | 9 | 0% | 5 | 0% | 14 | 0% | 5 | 0% |
| SUSPICIOUS VEHICLE | 97 | 0% | 10 | 0% | 11 | 0% | 17 | 0% | 14 | 0% | 20 | 0% | 17 | 0% | 8 | 0% |
| SWAT CALL OUT | 1 | 0% | 0 | 0% | 0 | 0% | 1 | 0% | 0 | 0% | 0 | 0% | 0 | 0% | 0 | 0% |
| TELECOMMUNICATIONS HA | 13 | 0% | 1 | 0% | 1 | 0% | 1 | 0% | 4 | 0% | 2 | 0% | 2 | 0% | 2 | 0% |
| THEFT | 151 | 0% | 14 | 0% | 30 | 0% | 21 | 0% | 25 | 0% | 21 | 0% | 27 | 0% | 13 | 0% |
| THEFT FROM AUTO | 31 | 0% | 2 | 0% | 3 | 0% | 8 | 0% | 2 | 0% | 6 | 0% | 8 | 0% | 2 | 0% |
| THEFT OF CREDIT CARD | 2 | 0% | 0 | 0% | 0 | 0% | 1 | 0% | 1 | 0% | 0 | 0% | 0 | 0% | 0 | 0% |
| THEFT OF SERVICE | 1 | 0% | 0 | 0% | 0 | 0% | 0 | 0% | 1 | 0% | 0 | 0% | 0 | 0% | 0 | 0% |
| THEFT-FREE TEXT | 624 | 1% | 72 | 1% | 103 | 2% | 89 | 1% | 95 | 2% | 93 | 1% | 103 | 2% | 69 | 1% |
| THREATS | 277 | 1% | 27 | 0% | 40 | 1% | 36 | 1% | 59 | 1% | 47 | 1% | 35 | 1% | 33 | 1% |
| TOW | 5 | 0% | 0 | 0% | 2 | 0% | 0 | 0% | 1 | 0% | 1 | 0% | 0 | 0% | 1 | 0% |
| TOW - RELEASE | 84 | 0% | 1 | 0% | 12 | 0% | 14 | 0% | 24 | 0% | 10 | 0% | 16 | 0% | 7 | 0% |
| TOW-AUTO TOW | 94 | 0% | 6 | 0% | 10 | 0% | 12 | 0% | 25 | 0% | 24 | 0% | 14 | 0% | 3 | 0% |
| TRAFFIC ALTERCATION | 18 | 0% | 3 | 0% | 2 | 0% | 4 | 0% | 1 | 0% | 2 | 0% | 4 | 0% | 2 | 0% |
| TRAFFIC ARREST | 23 | 0% | 7 | 0% | 2 | 0% | 2 | 0% | 4 | 0% | 3 | 0% | 3 | 0% | 2 | 0% |
| TRAFFIC COMPLAINT | 187 | 0% | 33 | 1% | 29 | 0% | 20 | 0% | 19 | 0% | 26 | 0% | 29 | 0% | 31 | 0% |
| TRAFFIC CONTROL DEVICE | 20 | 0% | 1 | 0% | 1 | 0% | 4 | 0% | 3 | 0% | 3 | 0% | 4 | 0% | 4 | 0% |
| TRAFFIC DETAIL | 9 | 0% | 0 | 0% | 3 | 0% | 2 | 0% | 0 | 0% | 3 | 0% | 1 | 0% | 0 | 0% |
| TRAFFIC OFFENSE | 2 | 0% | 0 | 0% | 0 | 0% | 1 | 0% | 1 | 0% | 0 | 0% | 0 | 0% | 0 | 0% |
| TRAFFIC STOP | 2,686 | 6% | 427 | 8% | 317 | 5% | 234 | 4% | 294 | 5% | 320 | 5% | 490 | 7% | 605 | 10% |
| TRAINING | 15 | 0% | 1 | 0% | 4 | 0% | 3 | 0% | 3 | 0% | 2 | 0% | 2 | 0% | 0 | 0% |

| | Total | | Sun | | Mon | | Tue | | Wed | | Thu | | Fri | | Sat | |
|-------------------------------|-------|----|-----|----|-----|----|-----|----|-----|----|-----|----|-----|----|-----|----|
| TRANSPORT | 15 | 0% | 0 | 0% | 2 | 0% | 3 | 0% | 3 | 0% | 4 | 0% | 2 | 0% | 1 | 0% |
| TRASH COMPLAINT | 10 | 0% | 2 | 0% | 1 | 0% | 1 | 0% | 2 | 0% | 0 | 0% | 0 | 0% | 4 | 0% |
| TREE DOWN | 4 | 0% | 0 | 0% | 1 | 0% | 1 | 0% | 0 | 0% | 1 | 0% | 1 | 0% | 0 | 0% |
| TRESPASSING | 240 | 1% | 31 | 1% | 26 | 0% | 35 | 1% | 33 | 1% | 47 | 1% | 38 | 1% | 30 | 0% |
| UNATTENDED CHILD | 4 | 0% | 0 | 0% | 0 | 0% | 0 | 0% | 3 | 0% | 1 | 0% | 0 | 0% | 0 | 0% |
| UNAUTHORIZED USE | 58 | 0% | 5 | 0% | 15 | 0% | 6 | 0% | 9 | 0% | 8 | 0% | 8 | 0% | 7 | 0% |
| UNRULY JUVENILE | 210 | 0% | 23 | 0% | 48 | 1% | 30 | 0% | 40 | 1% | 18 | 0% | 26 | 0% | 25 | 0% |
| UNWANTED GUEST | 424 | 1% | 62 | 1% | 53 | 1% | 63 | 1% | 61 | 1% | 62 | 1% | 62 | 1% | 61 | 1% |
| UTILITIES-PUBLIC | 73 | 0% | 11 | 0% | 11 | 0% | 9 | 0% | 10 | 0% | 11 | 0% | 9 | 0% | 12 | 0% |
| VANDALISM | 57 | 0% | 13 | 0% | 12 | 0% | 7 | 0% | 8 | 0% | 6 | 0% | 8 | 0% | 3 | 0% |
| VEHICLE MAINTENANCE/W | 36 | 0% | 2 | 0% | 10 | 0% | 4 | 0% | 3 | 0% | 4 | 0% | 8 | 0% | 5 | 0% |
| VEHICLE TRESPASS | 24 | 0% | 3 | 0% | 3 | 0% | 7 | 0% | 0 | 0% | 0 | 0% | 7 | 0% | 4 | 0% |
| VIOLATION OF TEMP PROT | 4 | 0% | 2 | 0% | 0 | 0% | 0 | 0% | 1 | 0% | 0 | 0% | 1 | 0% | 0 | 0% |
| WARRANT | 23 | 0% | 3 | 0% | 1 | 0% | 9 | 0% | 1 | 0% | 2 | 0% | 3 | 0% | 4 | 0% |
| WARRANT PICK UP | 118 | 0% | 17 | 0% | 10 | 0% | 20 | 0% | 17 | 0% | 20 | 0% | 19 | 0% | 15 | 0% |
| WARRANT SERVICE-ARRES | 129 | 0% | 18 | 0% | 25 | 0% | 16 | 0% | 20 | 0% | 22 | 0% | 17 | 0% | 11 | 0% |
| WASH | 2 | 0% | 0 | 0% | 0 | 0% | 0 | 0% | 0 | 0% | 1 | 0% | 1 | 0% | 0 | 0% |
| WEAPON POSSESSION | 2 | 0% | 1 | 0% | 0 | 0% | 0 | 0% | 0 | 0% | 0 | 0% | 0 | 0% | 1 | 0% |
| WELFARE CHECK | 990 | 2% | 140 | 2% | 148 | 2% | 137 | 2% | 119 | 2% | 164 | 3% | 141 | 2% | 141 | 2% |

EUCLID POLICE DEPARTMENT

PERSONNEL

August 2015

POLICE OFFICERS

NUMBER OF PERSONNEL

| | |
|---|-----------|
| Chief | 1 |
| Captain - Executive | 0 |
| Captains | 4 |
| Lieutenants | 5 |
| Sergeants | 9 |
| Uniform Police Officers | 56 |
| Police Officers Assigned to Plain Clothes | 15 |
| TOTAL REGULAR OFFICERS | 90 |
| Warrant Officers (part-time) | 2 |

CIVILIAN PERSONNEL

| | | |
|---|--------------------------------------|---|
| Secretaries: | Chief of Police (part-time) | 1 |
| | Executive Officer | 0 |
| | Narcotics and Vice (part-time) | 1 |
| | Detective Bureau (full-time) | 1 |
| | Detective Bureau (part-time) | 1 |
| | Administrative Secretary (part-time) | 0 |
| Record Room / Communications : | Supervisor | 0 |
| | Record Room Clerks (full-time) | 3 |
| | Record Room Clerks (part-time) | 2 |
| Administrative Assistant | | 1 |
| Administrative Assistant (part-time) | | 1 |
| Computer Coordinator | | 0 |
| Community Policing Specialist (part-time) | | 1 |
| Community Policing Outreach Specialist (part-time) | | 1 |
| Community Policing Education Specialist (part-time) | | 1 |
| Evidence/Property Technician (part-time) | | 2 |
| Animal Control: | Animal Control Officers | 1 |
| | Animal Control Officer (part-time) | 0 |
| | Kennelman (part-time) | 0 |
| | Secretary (full-time) | 0 |
| School Guards (part-time) | | 9 |
| Custodian (part-time) | | 1 |

TOTAL CIVILIAN PERSONNEL

27

Euclid Juvenile Diversion Program

The Euclid Juvenile Diversion program is available for first time Euclid youth offenders that have committed a misdemeanor level offense in the city. If offered this option, the youth must admit to the offense and appear before our Euclid Juvenile Magistrate. If the orders of the court are satisfied, the charges are expunged from the youth's record. In some cases, we're hearing second offenses if they are still at the misdemeanor level and they are a different offense than the original.

Ongoing statistics can be requested from Kate McLaughlin, Euclid Community Policing Unit, 289-8449 or kmclaughlin@cityofeuclid.com.

| August, 2015 | <i>This chart is a snapshot of activity relating to cases received.</i> |
|--------------|--|
| 6 | Number of first-time offenders referred to the Euclid Juvenile Diversion Program |
| 2 | Number of youth admitted into the program |
| 5 | Number of youth sent to Cuyahoga County Juvenile Court |
| 1 | Number of pending cases as of this reporting date |
| 1 | Number of no shows at court |
| 3 | Number of youth scheduled for court next month |

