



Honorable Bill Cervenik, Mayor
Ex-Officio Director of Public Safety
City of Euclid, Ohio

President and Members of Council
City of Euclid, Ohio

It is my pleasure to forward herewith
the monthly report of the Police Department for

JUNE 2015

Respectfully submitted,

A handwritten signature in blue ink that reads "Thomas M. Brickman".

Thomas Brickman
Chief of Police

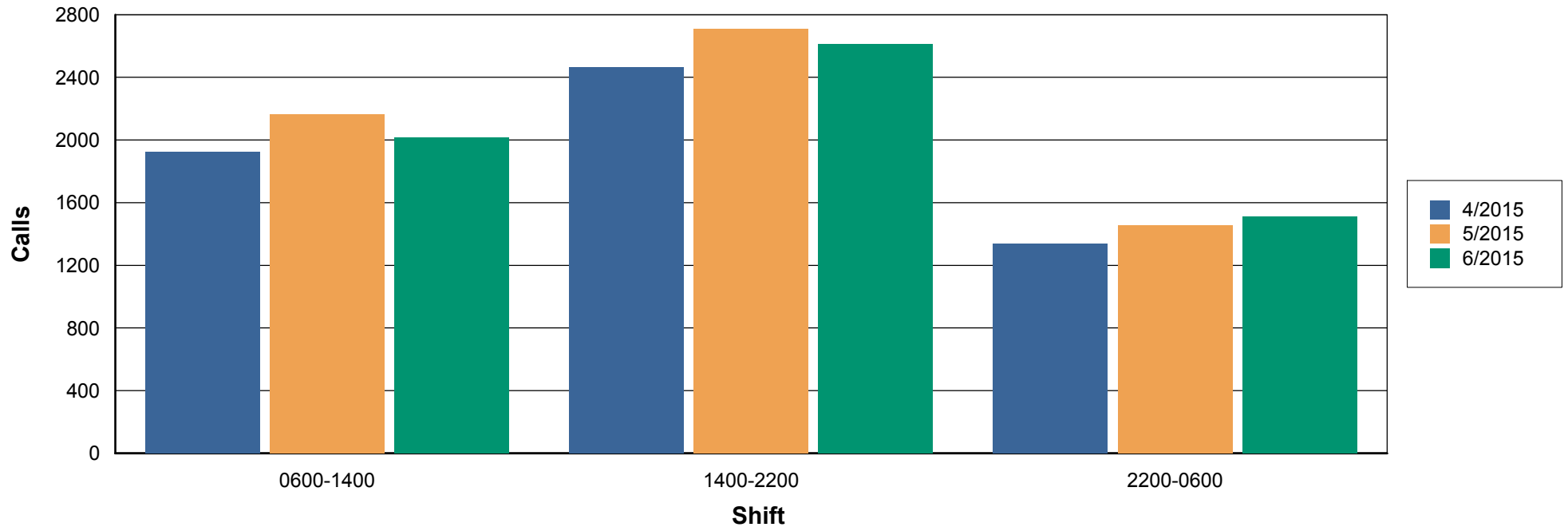
CHAGRIN VALLEY DISPATCH

Euclid Police Department CALLS RECEIVED SUMMARY *by Shift / Month / Year*

Query Dates: 4/1/2015 and 6/30/2015

Calls Received by Month and Shift

For 2015



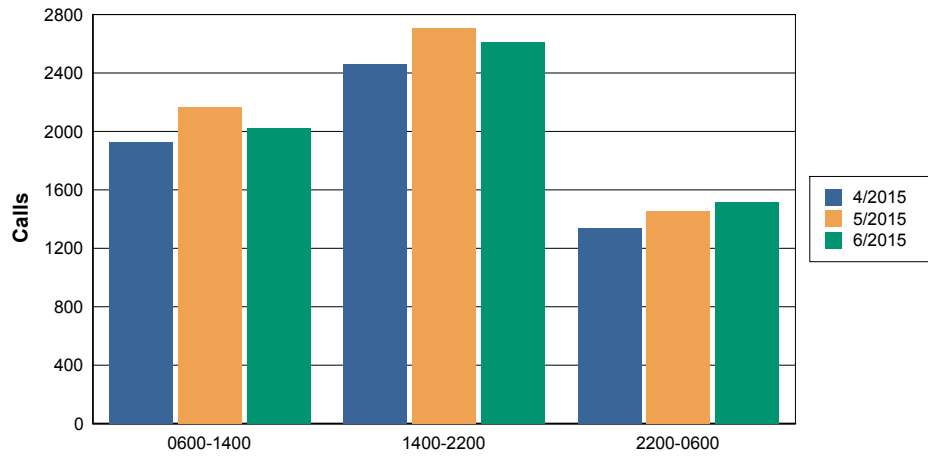
Calls Received by Month and Shift

	Total		0600-1400		1400-2200		2200-0600	
Total	18,198	100%	6,105	34%	7,786	43%	4,307	24%
4/2015	5,726	100%	1,923	34%	2,463	43%	1,340	23%
5/2015	6,325	100%	2,163	34%	2,709	43%	1,453	23%

	Total		0600-1400		1400-2200		2200-0600	
6/2015	6,147	100%	2,019	33%	2,614	43%	1,514	25%

Calls Received by Day of the Week and Shift

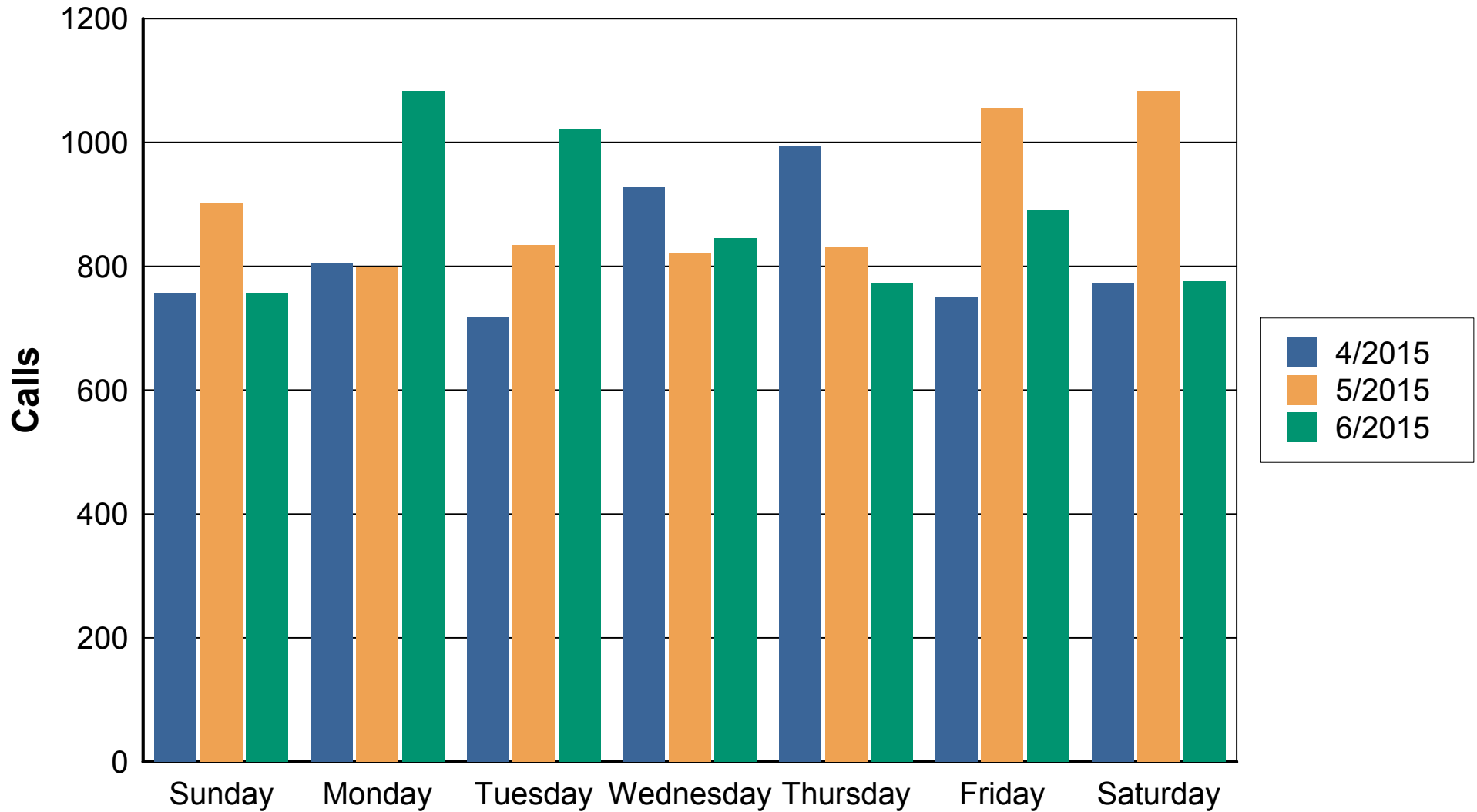
For 2015



Calls Received by Day of the Week and Shift

	Total		0600-1400		1400-2200		2200-0600	
4/2015	5,726	100%	1,923	100%	2,463	100%	1,340	100%
5/2015	6,325	100%	2,163	100%	2,709	100%	1,453	100%
6/2015	6,147	100%	2,019	100%	2,614	100%	1,514	100%

Calls Received by Day of Week and Month

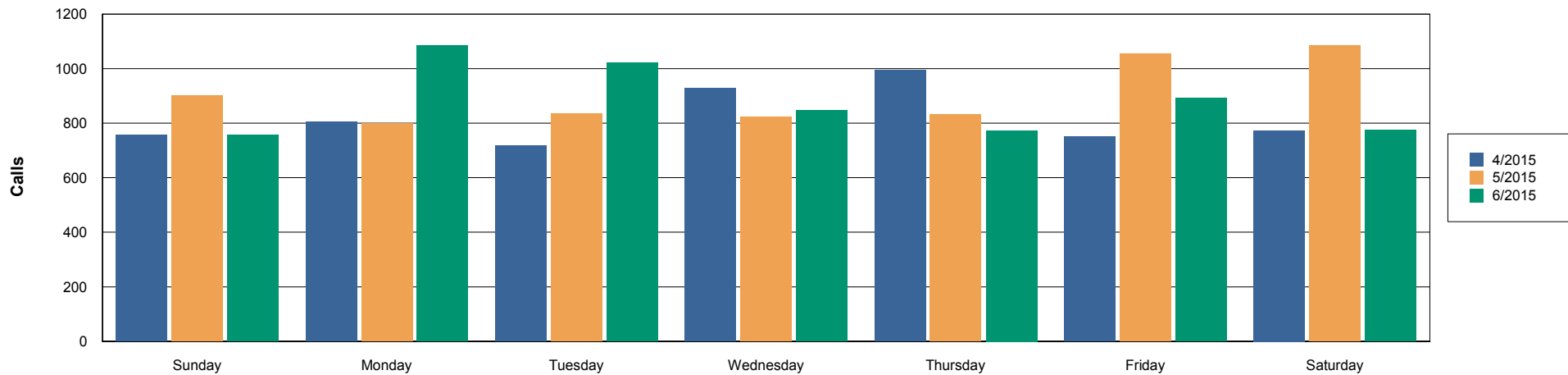


Calls Received by Month, Shift, and Day of Week

		Total		Sunday		Monday		Tuesday		Wednesday		Thursday		Friday		Saturday	
Total		18,194	100%	2,415	13%	2,687	15%	2,571	14%	2,595	14%	2,598	14%	2,697	15%	2,631	14%
4/2015	Total	5,725	100%	757	13%	805	14%	717	13%	928	16%	994	17%	751	13%	773	14%
	0600-1400	1,922	100%	216	11%	274	14%	269	14%	333	17%	347	18%	244	13%	239	12%
	1400-2200	2,463	100%	298	12%	362	15%	303	12%	407	17%	434	18%	331	13%	328	13%
	2200-0600	1,340	100%	243	18%	169	13%	145	11%	188	14%	213	16%	176	13%	206	15%
5/2015	Total	6,325	100%	901	14%	799	13%	834	13%	822	13%	831	13%	1,055	17%	1,083	17%
	0600-1400	2,163	100%	256	12%	275	13%	318	15%	311	14%	305	14%	344	16%	354	16%
	1400-2200	2,709	100%	372	14%	330	12%	330	12%	379	14%	359	13%	473	17%	466	17%
	2200-0600	1,453	100%	273	19%	194	13%	186	13%	132	9%	167	11%	238	16%	263	18%
6/2015	Total	6,144	100%	757	12%	1,083	18%	1,020	17%	845	14%	773	13%	891	14%	775	13%
	0600-1400	2,017	100%	216	11%	372	18%	349	17%	294	15%	254	13%	308	15%	224	11%
	1400-2200	2,613	100%	284	11%	491	19%	427	16%	368	14%	349	13%	357	14%	337	13%
	2200-0600	1,514	100%	257	17%	220	15%	244	16%	183	12%	170	11%	226	15%	214	14%

Calls Received by Day of Week

For 2015



Calls Received by Year, Hour, and Day of Week

		Total	Sunday	Monday	Tuesday	Wednesday	Thursday	Friday	Saturday
4/2015	Total	5,726 100%	757 13%	805 14%	717 13%	928 16%	995 17%	751 13%	773 13%
	0000	218 100%	42 19%	29 13%	27 12%	35 16%	38 17%	13 6%	34 16%
	0100	163 100%	32 20%	19 12%	20 12%	17 10%	27 17%	27 17%	21 13%
	0200	158 100%	42 27%	13 8%	15 9%	17 11%	22 14%	22 14%	27 17%
	0300	121 100%	23 19%	13 11%	10 8%	16 13%	22 18%	20 17%	17 14%
	0400	88 100%	10 11%	16 18%	4 5%	19 22%	12 14%	15 17%	12 14%
	0500	91 100%	14 15%	13 14%	10 11%	20 22%	14 15%	10 11%	10 11%
	0600	72 100%	8 11%	7 10%	15 21%	7 10%	21 29%	7 10%	7 10%
	0700	154 100%	16 10%	28 18%	21 14%	18 12%	27 18%	26 17%	18 12%
	0800	219 100%	22 10%	35 16%	34 16%	34 16%	42 19%	24 11%	28 13%
	0900	258 100%	28 11%	38 15%	37 14%	46 18%	49 19%	29 11%	31 12%
	1000	320 100%	40 13%	50 16%	43 13%	59 18%	52 16%	38 12%	38 12%
	1100	281 100%	34 12%	33 12%	39 14%	51 18%	43 15%	41 15%	40 14%
	1200	277 100%	31 11%	33 12%	36 13%	55 20%	54 19%	42 15%	26 9%
	1300	341 100%	37 11%	50 15%	44 13%	63 18%	59 17%	37 11%	51 15%
	1400	294 100%	35 12%	54 18%	34 12%	43 15%	51 17%	39 13%	38 13%
	1500	305 100%	31 10%	53 17%	44 14%	56 18%	51 17%	30 10%	40 13%
	1600	311 100%	38 12%	46 15%	33 11%	47 15%	66 21%	42 14%	39 13%
	1700	361 100%	32 9%	48 13%	53 15%	68 19%	65 18%	55 15%	40 11%
	1800	337 100%	50 15%	46 14%	35 10%	58 17%	59 18%	43 13%	46 14%
1900	294 100%	45 15%	40 14%	36 12%	46 16%	42 14%	38 13%	47 16%	
2000	280 100%	38 14%	36 13%	33 12%	43 15%	55 20%	38 14%	37 13%	
2100	281 100%	29 10%	39 14%	35 12%	46 16%	45 16%	46 16%	41 15%	

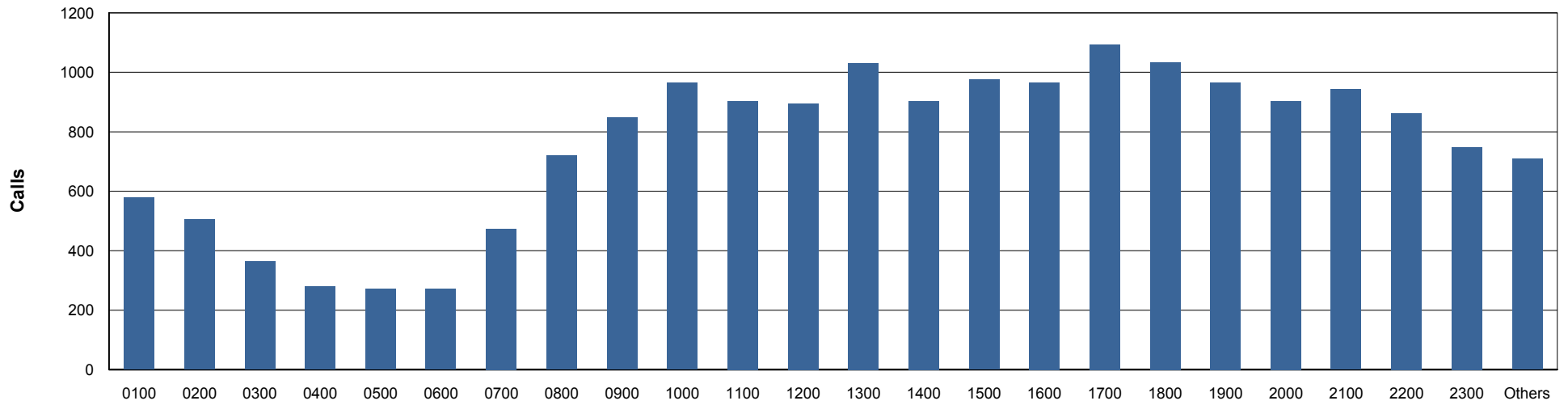
		Total	Sunday	Monday	Tuesday	Wednesday	Thursday	Friday	Saturday
4/2015	2200	272 100%	43 16%	32 12%	32 12%	38 14%	39 14%	43 16%	45 17%
	2300	230 100%	37 16%	34 15%	27 12%	26 11%	40 17%	26 11%	40 17%
5/2015	Total	6,326 100%	901 14%	799 13%	834 13%	822 13%	831 13%	1,055 17%	1,084 17%
	0000	227 100%	53 23%	21 9%	36 16%	14 6%	21 9%	45 20%	37 16%
	0100	209 100%	40 19%	29 14%	25 12%	20 10%	18 9%	26 12%	51 24%
	0200	179 100%	38 21%	23 13%	12 7%	16 9%	27 15%	26 15%	37 21%
	0300	110 100%	22 20%	18 16%	20 18%	6 5%	8 7%	13 12%	23 21%
	0400	93 100%	15 16%	12 13%	15 16%	6 6%	13 14%	17 18%	15 16%
	0500	102 100%	19 19%	11 11%	13 13%	15 15%	11 11%	22 22%	11 11%
	0600	102 100%	25 25%	8 8%	13 13%	13 13%	8 8%	18 18%	17 17%
	0700	176 100%	20 11%	17 10%	24 14%	27 15%	29 16%	33 19%	26 15%
	0800	277 100%	28 10%	32 12%	42 15%	48 17%	44 16%	44 16%	39 14%
	0900	312 100%	39 13%	45 14%	44 14%	49 16%	44 14%	43 14%	48 15%
	1000	339 100%	35 10%	35 10%	48 14%	53 16%	54 16%	63 19%	51 15%
	1100	310 100%	39 13%	41 13%	51 16%	40 13%	33 11%	48 15%	58 19%
	1200	305 100%	39 13%	42 14%	49 16%	32 10%	47 15%	41 13%	55 18%
	1300	342 100%	31 9%	55 16%	47 14%	49 14%	46 13%	54 16%	60 18%
	1400	299 100%	41 14%	32 11%	40 13%	50 17%	36 12%	56 19%	44 15%
	1500	352 100%	42 12%	43 12%	56 16%	46 13%	47 13%	66 19%	52 15%
	1600	341 100%	38 11%	50 15%	52 15%	47 14%	39 11%	62 18%	53 16%
	1700	384 100%	44 11%	50 13%	44 11%	52 14%	59 15%	62 16%	73 19%
	1800	356 100%	48 13%	38 11%	41 12%	63 18%	47 13%	60 17%	59 17%
1900	325 100%	51 16%	37 11%	41 13%	45 14%	45 14%	44 14%	62 19%	
2000	311 100%	48 15%	35 11%	30 10%	37 12%	38 12%	61 20%	62 20%	

		Total	Sunday	Monday	Tuesday	Wednesday	Thursday	Friday	Saturday
5/2015	2100	341 100%	60 18%	45 13%	26 8%	39 11%	48 14%	62 18%	61 18%
	2200	270 100%	51 19%	42 16%	26 10%	37 14%	36 13%	43 16%	35 13%
	2300	264 100%	35 13%	38 14%	39 15%	18 7%	33 13%	46 17%	55 21%
6/2015	Total	6,146 100%	757 12%	1,083 18%	1,021 17%	846 14%	773 13%	891 14%	775 13%
	0000	257 100%	50 19%	42 16%	39 15%	29 11%	20 8%	39 15%	38 15%
	0100	207 100%	40 19%	26 13%	31 15%	28 14%	24 12%	29 14%	29 14%
	0200	168 100%	34 20%	20 12%	31 18%	23 14%	10 6%	29 17%	21 13%
	0300	132 100%	21 16%	18 14%	21 16%	17 13%	22 17%	17 13%	16 12%
	0400	98 100%	16 16%	16 16%	25 26%	8 8%	13 13%	9 9%	11 11%
	0500	79 100%	17 22%	9 11%	19 24%	6 8%	10 13%	8 10%	10 13%
	0600	97 100%	14 14%	19 20%	17 18%	16 16%	12 12%	15 15%	4 4%
	0700	143 100%	10 7%	23 16%	22 15%	25 17%	18 13%	27 19%	18 13%
	0800	222 100%	18 8%	37 17%	36 16%	34 15%	38 17%	33 15%	26 12%
	0900	277 100%	33 12%	57 21%	51 18%	30 11%	28 10%	44 16%	34 12%
	1000	306 100%	30 10%	61 20%	43 14%	52 17%	36 12%	47 15%	37 12%
	1100	312 100%	35 11%	57 18%	58 19%	54 17%	37 12%	37 12%	34 11%
	1200	313 100%	35 11%	53 17%	55 18%	44 14%	39 12%	58 19%	29 9%
	1300	347 100%	41 12%	65 19%	67 19%	39 11%	46 13%	47 14%	42 12%
	1400	310 100%	24 8%	55 18%	46 15%	56 18%	48 15%	45 15%	36 12%
	1500	318 100%	29 9%	59 19%	53 17%	46 14%	47 15%	44 14%	40 13%
	1600	315 100%	34 11%	59 19%	49 16%	42 13%	42 13%	52 17%	37 12%
	1700	347 100%	40 12%	64 18%	60 17%	50 14%	47 14%	45 13%	41 12%
1800	341 100%	34 10%	78 23%	64 19%	44 13%	35 10%	48 14%	38 11%	
1900	348 100%	48 14%	68 20%	52 15%	50 14%	39 11%	42 12%	49 14%	

		Total	Sunday	Monday	Tuesday	Wednesday	Thursday	Friday	Saturday
6/2015	2000	313 100%	37 12%	52 17%	56 18%	37 12%	46 15%	45 14%	40 13%
	2100	321 100%	38 12%	56 17%	47 15%	43 13%	45 14%	36 11%	56 17%
	2200	320 100%	42 13%	52 16%	44 14%	40 13%	42 13%	56 18%	44 14%
	2300	255 100%	37 15%	37 15%	35 14%	33 13%	29 11%	39 15%	45 18%

Calls Received by Hour

For 2015



Calls Received by Month, Hour, and Day of Week

		Total	Sunday	Monday	Tuesday	Wednesday	Thursday	Friday	Saturday
Total		18,198 100%	2,415 13%	2,687 15%	2,572 14%	2,596 14%	2,599 14%	2,697 15%	2,632 14%
4/2015	Total	5,726 100%	757 13%	805 14%	717 13%	928 16%	995 17%	751 13%	773 13%
	0000	218 100%	42 19%	29 13%	27 12%	35 16%	38 17%	13 6%	34 16%
	0100	163 100%	32 20%	19 12%	20 12%	17 10%	27 17%	27 17%	21 13%
	0200	158 100%	42 27%	13 8%	15 9%	17 11%	22 14%	22 14%	27 17%
	0300	121 100%	23 19%	13 11%	10 8%	16 13%	22 18%	20 17%	17 14%
	0400	88 100%	10 11%	16 18%	4 5%	19 22%	12 14%	15 17%	12 14%
	0500	91 100%	14 15%	13 14%	10 11%	20 22%	14 15%	10 11%	10 11%
	0600	72 100%	8 11%	7 10%	15 21%	7 10%	21 29%	7 10%	7 10%
	0700	154 100%	16 10%	28 18%	21 14%	18 12%	27 18%	26 17%	18 12%
	0800	219 100%	22 10%	35 16%	34 16%	34 16%	42 19%	24 11%	28 13%
	0900	258 100%	28 11%	38 15%	37 14%	46 18%	49 19%	29 11%	31 12%
	1000	320 100%	40 13%	50 16%	43 13%	59 18%	52 16%	38 12%	38 12%
	1100	281 100%	34 12%	33 12%	39 14%	51 18%	43 15%	41 15%	40 14%
	1200	277 100%	31 11%	33 12%	36 13%	55 20%	54 19%	42 15%	26 9%
	1300	341 100%	37 11%	50 15%	44 13%	63 18%	59 17%	37 11%	51 15%
	1400	294 100%	35 12%	54 18%	34 12%	43 15%	51 17%	39 13%	38 13%
	1500	305 100%	31 10%	53 17%	44 14%	56 18%	51 17%	30 10%	40 13%
1600	311 100%	38 12%	46 15%	33 11%	47 15%	66 21%	42 14%	39 13%	
1700	361 100%	32 9%	48 13%	53 15%	68 19%	65 18%	55 15%	40 11%	
1800	337 100%	50 15%	46 14%	35 10%	58 17%	59 18%	43 13%	46 14%	
1900	294 100%	45 15%	40 14%	36 12%	46 16%	42 14%	38 13%	47 16%	

		Total	Sunday	Monday	Tuesday	Wednesday	Thursday	Friday	Saturday
4/2015	2000	280 100%	38 14%	36 13%	33 12%	43 15%	55 20%	38 14%	37 13%
	2100	281 100%	29 10%	39 14%	35 12%	46 16%	45 16%	46 16%	41 15%
	2200	272 100%	43 16%	32 12%	32 12%	38 14%	39 14%	43 16%	45 17%
	2300	230 100%	37 16%	34 15%	27 12%	26 11%	40 17%	26 11%	40 17%
5/2015	Total	6,326 100%	901 14%	799 13%	834 13%	822 13%	831 13%	1,055 17%	1,084 17%
	0000	227 100%	53 23%	21 9%	36 16%	14 6%	21 9%	45 20%	37 16%
	0100	209 100%	40 19%	29 14%	25 12%	20 10%	18 9%	26 12%	51 24%
	0200	179 100%	38 21%	23 13%	12 7%	16 9%	27 15%	26 15%	37 21%
	0300	110 100%	22 20%	18 16%	20 18%	6 5%	8 7%	13 12%	23 21%
	0400	93 100%	15 16%	12 13%	15 16%	6 6%	13 14%	17 18%	15 16%
	0500	102 100%	19 19%	11 11%	13 13%	15 15%	11 11%	22 22%	11 11%
	0600	102 100%	25 25%	8 8%	13 13%	13 13%	8 8%	18 18%	17 17%
	0700	176 100%	20 11%	17 10%	24 14%	27 15%	29 16%	33 19%	26 15%
	0800	277 100%	28 10%	32 12%	42 15%	48 17%	44 16%	44 16%	39 14%
	0900	312 100%	39 13%	45 14%	44 14%	49 16%	44 14%	43 14%	48 15%
	1000	339 100%	35 10%	35 10%	48 14%	53 16%	54 16%	63 19%	51 15%
	1100	310 100%	39 13%	41 13%	51 16%	40 13%	33 11%	48 15%	58 19%
	1200	305 100%	39 13%	42 14%	49 16%	32 10%	47 15%	41 13%	55 18%
	1300	342 100%	31 9%	55 16%	47 14%	49 14%	46 13%	54 16%	60 18%
	1400	299 100%	41 14%	32 11%	40 13%	50 17%	36 12%	56 19%	44 15%
	1500	352 100%	42 12%	43 12%	56 16%	46 13%	47 13%	66 19%	52 15%
1600	341 100%	38 11%	50 15%	52 15%	47 14%	39 11%	62 18%	53 16%	
1700	384 100%	44 11%	50 13%	44 11%	52 14%	59 15%	62 16%	73 19%	
1800	356 100%	48 13%	38 11%	41 12%	63 18%	47 13%	60 17%	59 17%	

		Total	Sunday	Monday	Tuesday	Wednesday	Thursday	Friday	Saturday
5/2015	1900	325 100%	51 16%	37 11%	41 13%	45 14%	45 14%	44 14%	62 19%
	2000	311 100%	48 15%	35 11%	30 10%	37 12%	38 12%	61 20%	62 20%
	2100	341 100%	60 18%	45 13%	26 8%	39 11%	48 14%	62 18%	61 18%
	2200	270 100%	51 19%	42 16%	26 10%	37 14%	36 13%	43 16%	35 13%
	2300	264 100%	35 13%	38 14%	39 15%	18 7%	33 13%	46 17%	55 21%
6/2015	Total	6,146 100%	757 12%	1,083 18%	1,021 17%	846 14%	773 13%	891 14%	775 13%
	0000	257 100%	50 19%	42 16%	39 15%	29 11%	20 8%	39 15%	38 15%
	0100	207 100%	40 19%	26 13%	31 15%	28 14%	24 12%	29 14%	29 14%
	0200	168 100%	34 20%	20 12%	31 18%	23 14%	10 6%	29 17%	21 13%
	0300	132 100%	21 16%	18 14%	21 16%	17 13%	22 17%	17 13%	16 12%
	0400	98 100%	16 16%	16 16%	25 26%	8 8%	13 13%	9 9%	11 11%
	0500	79 100%	17 22%	9 11%	19 24%	6 8%	10 13%	8 10%	10 13%
	0600	97 100%	14 14%	19 20%	17 18%	16 16%	12 12%	15 15%	4 4%
	0700	143 100%	10 7%	23 16%	22 15%	25 17%	18 13%	27 19%	18 13%
	0800	222 100%	18 8%	37 17%	36 16%	34 15%	38 17%	33 15%	26 12%
	0900	277 100%	33 12%	57 21%	51 18%	30 11%	28 10%	44 16%	34 12%
	1000	306 100%	30 10%	61 20%	43 14%	52 17%	36 12%	47 15%	37 12%
	1100	312 100%	35 11%	57 18%	58 19%	54 17%	37 12%	37 12%	34 11%
	1200	313 100%	35 11%	53 17%	55 18%	44 14%	39 12%	58 19%	29 9%
	1300	347 100%	41 12%	65 19%	67 19%	39 11%	46 13%	47 14%	42 12%
1400	310 100%	24 8%	55 18%	46 15%	56 18%	48 15%	45 15%	36 12%	
1500	318 100%	29 9%	59 19%	53 17%	46 14%	47 15%	44 14%	40 13%	
1600	315 100%	34 11%	59 19%	49 16%	42 13%	42 13%	52 17%	37 12%	
1700	347 100%	40 12%	64 18%	60 17%	50 14%	47 14%	45 13%	41 12%	

		Total	Sunday	Monday	Tuesday	Wednesday	Thursday	Friday	Saturday
6/2015	1800	341 100%	34 10%	78 23%	64 19%	44 13%	35 10%	48 14%	38 11%
	1900	348 100%	48 14%	68 20%	52 15%	50 14%	39 11%	42 12%	49 14%
	2000	313 100%	37 12%	52 17%	56 18%	37 12%	46 15%	45 14%	40 13%
	2100	321 100%	38 12%	56 17%	47 15%	43 13%	45 14%	36 11%	56 17%
	2200	320 100%	42 13%	52 16%	44 14%	40 13%	42 13%	56 18%	44 14%
	2300	255 100%	37 15%	37 15%	35 14%	33 13%	29 11%	39 15%	45 18%

Calls Received by Call Type by Day of Week

*NOTE: These represent the calls as initially entered with the information first received by the person calling.

	Total		Sun		Mon		Tue		Wed		Thu		Fri		Sat	
Total	18,205	100%	2,416	100%	2,688	100%	2,573	100%	2,597	100%	2,599	100%	2,698	100%	2,634	100%
	6	0%	0	0%	1	0%	2	0%	1	0%	0	0%	1	0%	1	0%
911	227	1%	32	1%	35	1%	26	1%	30	1%	33	1%	28	1%	43	2%
911 HANG UP	54	0%	4	0%	7	0%	13	1%	6	0%	5	0%	10	0%	9	0%
ABANDONED VEHICLE	26	0%	0	0%	4	0%	5	0%	5	0%	6	0%	6	0%	0	0%
ALARM DROP	810	4%	106	4%	120	4%	109	4%	121	5%	110	4%	128	5%	116	4%
ALARM TEST	50	0%	1	0%	10	0%	12	0%	13	1%	7	0%	7	0%	0	0%
ANIMAL- MISC.	368	2%	60	2%	71	3%	44	2%	41	2%	37	1%	48	2%	67	3%
ANIMAL WARDEN DISPATC	5	0%	0	0%	0	0%	0	0%	0	0%	2	0%	3	0%	0	0%
ARREST ON WARRANT	1	0%	1	0%	0	0%	0	0%	0	0%	0	0%	0	0%	0	0%
ARSON	1	0%	0	0%	0	0%	0	0%	0	0%	1	0%	0	0%	0	0%
ASSAULT	156	1%	21	1%	20	1%	26	1%	25	1%	22	1%	24	1%	18	1%
ASSIST-GENERAL	266	1%	38	2%	49	2%	34	1%	31	1%	39	2%	39	1%	36	1%
ASSIST-OTHER DEPT	70	0%	10	0%	6	0%	8	0%	6	0%	11	0%	14	1%	15	1%
ATTEMPT TO LOCATE	17	0%	2	0%	1	0%	4	0%	2	0%	2	0%	3	0%	3	0%
ATTEMPTED MURDER	1	0%	0	0%	0	0%	1	0%	0	0%	0	0%	0	0%	0	0%
AUTO REPO	5	0%	0	0%	0	0%	0	0%	0	0%	2	0%	3	0%	0	0%
AUTO TOWED	2	0%	0	0%	0	0%	0	0%	2	0%	0	0%	0	0%	0	0%
BREAKING AND ENTERING	51	0%	9	0%	7	0%	6	0%	8	0%	7	0%	11	0%	3	0%
BROADCAST	10	0%	2	0%	0	0%	1	0%	0	0%	3	0%	2	0%	2	0%
BURGLARY	84	0%	10	0%	21	1%	14	1%	10	0%	7	0%	9	0%	13	0%

	Total		Sun		Mon		Tue		Wed		Thu		Fri		Sat	
BUSINESS CHECK	4	0%	1	0%	1	0%	0	0%	0	0%	2	0%	0	0%	0	0%
CALL BOX CALL	12	0%	1	0%	5	0%	0	0%	0	0%	0	0%	2	0%	4	0%
CHILD ABUSE-REPORTED	7	0%	0	0%	1	0%	0	0%	3	0%	3	0%	0	0%	0	0%
CHILD ENDANGERMENT	1	0%	0	0%	0	0%	0	0%	1	0%	0	0%	0	0%	0	0%
CIVIL MATTER	31	0%	4	0%	5	0%	4	0%	6	0%	2	0%	5	0%	5	0%
COMPLAINTS-GENERAL	223	1%	23	1%	23	1%	35	1%	31	1%	34	1%	49	2%	28	1%
COMPLAINTS-JUVENILE	292	2%	42	2%	44	2%	48	2%	44	2%	46	2%	42	2%	26	1%
COUNTERFEITING	13	0%	2	0%	2	0%	2	0%	3	0%	2	0%	1	0%	1	0%
COURT	45	0%	0	0%	9	0%	6	0%	11	0%	15	1%	4	0%	0	0%
CRIMINAL DAMAGE	43	0%	4	0%	6	0%	7	0%	7	0%	3	0%	5	0%	11	0%
CRIMINAL MISCHIEF	14	0%	4	0%	0	0%	2	0%	2	0%	2	0%	2	0%	2	0%
CURFEW	2	0%	0	0%	0	0%	0	0%	0	0%	1	0%	0	0%	1	0%
CUSTODY DISPUTE	40	0%	4	0%	9	0%	5	0%	4	0%	5	0%	6	0%	7	0%
DAMAGE TO PROPERTY	54	0%	7	0%	14	1%	8	0%	5	0%	7	0%	7	0%	6	0%
DAMAGE TO VEHICLE	40	0%	6	0%	4	0%	7	0%	3	0%	6	0%	7	0%	7	0%
DEBRIS ON STREET	33	0%	1	0%	7	0%	2	0%	6	0%	8	0%	2	0%	7	0%
DEER KILL	5	0%	1	0%	0	0%	0	0%	1	0%	1	0%	2	0%	0	0%
DEPARTMENTAL INFORMA	104	1%	7	0%	18	1%	21	1%	12	0%	15	1%	21	1%	10	0%
DETAIL	633	3%	67	3%	85	3%	122	5%	97	4%	114	4%	94	3%	54	2%
DISABLED MOTOR VEHICLE	190	1%	25	1%	24	1%	21	1%	28	1%	34	1%	34	1%	24	1%
DISORDERLY	40	0%	7	0%	7	0%	6	0%	3	0%	2	0%	8	0%	7	0%
DISTURBANCE	584	3%	98	4%	77	3%	70	3%	77	3%	82	3%	83	3%	97	4%
DOA AND BODY FOUND	5	0%	1	0%	0	0%	0	0%	2	0%	1	0%	0	0%	1	0%
DOMESTIC	173	1%	40	2%	22	1%	23	1%	17	1%	15	1%	26	1%	30	1%

	Total		Sun		Mon		Tue		Wed		Thu		Fri		Sat	
DRUG ARREST	31	0%	2	0%	3	0%	6	0%	3	0%	2	0%	8	0%	7	0%
DRUG INVESTIGATION	33	0%	1	0%	4	0%	8	0%	12	0%	3	0%	4	0%	1	0%
EQUIPMENT FAILURE/MALF	3	0%	0	0%	3	0%	0	0%	0	0%	0	0%	0	0%	0	0%
ERRANDS	3	0%	0	0%	1	0%	0	0%	0	0%	0	0%	2	0%	0	0%
ERRATIC DRIVER	94	1%	15	1%	6	0%	5	0%	13	1%	19	1%	14	1%	22	1%
ESCORT	15	0%	3	0%	0	0%	1	0%	3	0%	4	0%	0	0%	4	0%
FAMILY DISTURBANCE	1	0%	0	0%	0	0%	0	0%	0	0%	0	0%	1	0%	0	0%
FAMILY TROUBLE	91	0%	22	1%	14	1%	12	0%	4	0%	10	0%	15	1%	14	1%
FIGHT- DISTURBANCE	141	1%	12	0%	15	1%	25	1%	21	1%	23	1%	24	1%	21	1%
FIRE CALL-CARBON MON-I	6	0%	2	0%	1	0%	1	0%	0	0%	0	0%	1	0%	1	0%
FIRE CALL-CARBON MONO	26	0%	6	0%	6	0%	4	0%	1	0%	1	0%	3	0%	5	0%
FIRE CALL-COOKING	8	0%	2	0%	1	0%	1	0%	0	0%	1	0%	0	0%	3	0%
FIRE CALL-ELEVATOR RES	16	0%	6	0%	2	0%	3	0%	0	0%	3	0%	0	0%	2	0%
FIRE CALL-FIRE ALARM	128	1%	23	1%	25	1%	18	1%	13	1%	18	1%	18	1%	13	0%
FIRE CALL-GENERAL	57	0%	15	1%	10	0%	10	0%	3	0%	8	0%	6	0%	5	0%
FIRE CALL-GRASS	3	0%	0	0%	1	0%	0	0%	1	0%	0	0%	0	0%	1	0%
FIRE CALL-HAZMAT	1	0%	0	0%	1	0%	0	0%	0	0%	0	0%	0	0%	0	0%
FIRE CALL-MUTUAL AID	3	0%	1	0%	0	0%	1	0%	0	0%	0	0%	0	0%	1	0%
FIRE CALL-ODOR INV/INSID	25	0%	5	0%	4	0%	4	0%	3	0%	3	0%	3	0%	3	0%
FIRE CALL-ODOR INV/OUTS	16	0%	3	0%	3	0%	2	0%	1	0%	0	0%	5	0%	2	0%
FIRE CALL-STRUCTURE FIR	20	0%	2	0%	2	0%	3	0%	5	0%	2	0%	2	0%	4	0%
FIRE CALL-UTILITIES	34	0%	5	0%	9	0%	10	0%	2	0%	5	0%	2	0%	1	0%
FIRE CALL-VEH FIRE/INSIDE	1	0%	0	0%	1	0%	0	0%	0	0%	0	0%	0	0%	0	0%
FIRE CALL-VEH FIRE/OUTS	7	0%	1	0%	1	0%	2	0%	0	0%	0	0%	2	0%	1	0%

	Total		Sun		Mon		Tue		Wed		Thu		Fri		Sat	
FOLLOW UP INVESTIGATIO	145	1%	17	1%	29	1%	23	1%	21	1%	18	1%	21	1%	16	1%
FRAUD	61	0%	4	0%	10	0%	5	0%	13	1%	13	1%	10	0%	6	0%
FUEL	2	0%	0	0%	0	0%	0	0%	1	0%	1	0%	0	0%	0	0%
GUARDIAN CALL - WELFAR	2	0%	1	0%	0	0%	0	0%	0	0%	0	0%	1	0%	0	0%
HARASSING-COMMUNICAT	99	1%	8	0%	16	1%	20	1%	16	1%	18	1%	10	0%	11	0%
HIGH WATER	1	0%	0	0%	0	0%	0	0%	0	0%	0	0%	0	0%	1	0%
HIT CONFIRMATION	489	3%	50	2%	77	3%	81	3%	72	3%	75	3%	71	3%	63	2%
HITCH-HIKING	1	0%	0	0%	0	0%	0	0%	0	0%	0	0%	0	0%	1	0%
HOUSE WATCH	27	0%	1	0%	2	0%	5	0%	5	0%	6	0%	5	0%	3	0%
IDENTITY THEFT	34	0%	1	0%	5	0%	7	0%	7	0%	5	0%	7	0%	2	0%
ILLEGAL DUMPING	4	0%	0	0%	0	0%	0	0%	2	0%	0	0%	2	0%	0	0%
INJURY TO OFFICER	3	0%	1	0%	0	0%	1	0%	0	0%	0	0%	0	0%	1	0%
JUVENILE DIVERSION	11	0%	1	0%	1	0%	1	0%	4	0%	3	0%	1	0%	0	0%
JUVENILE-RUNAWAY	14	0%	1	0%	1	0%	0	0%	1	0%	4	0%	6	0%	1	0%
K9-CALL OUT	2	0%	0	0%	0	0%	0	0%	0	0%	1	0%	1	0%	0	0%
LAST OUT	46	0%	4	0%	12	0%	9	0%	12	0%	1	0%	7	0%	1	0%
LEADS - ENTRY	1,575	9%	178	7%	209	8%	247	10%	272	10%	222	9%	201	7%	246	9%
LEADS - REMOVAL	705	4%	45	2%	134	5%	139	5%	111	4%	109	4%	100	4%	67	3%
LINES DOWN	4	0%	0	0%	1	0%	2	0%	1	0%	0	0%	0	0%	0	0%
LOCK-OUT HOUSE	15	0%	4	0%	5	0%	1	0%	2	0%	2	0%	1	0%	0	0%
LOCK-OUT VEHICLE	399	2%	50	2%	56	2%	57	2%	37	1%	70	3%	60	2%	69	3%
LUNCH/OFFICER	1	0%	0	0%	0	0%	1	0%	0	0%	0	0%	0	0%	0	0%
MENACING	1	0%	1	0%	0	0%	0	0%	0	0%	0	0%	0	0%	0	0%
MISSING JUVENILE	91	0%	13	1%	11	0%	11	0%	15	1%	13	1%	16	1%	12	0%

	Total		Sun		Mon		Tue		Wed		Thu		Fri		Sat	
MISSING PERSON	24	0%	4	0%	4	0%	6	0%	2	0%	5	0%	0	0%	3	0%
MUTUAL AID, GIVEN	11	0%	3	0%	1	0%	1	0%	2	0%	3	0%	1	0%	0	0%
MUTUAL AID, REQUESTED	5	0%	1	0%	2	0%	0	0%	0	0%	2	0%	0	0%	0	0%
MVA	280	2%	31	1%	43	2%	40	2%	35	1%	37	1%	50	2%	44	2%
MVA - DEER	6	0%	0	0%	1	0%	0	0%	2	0%	2	0%	0	0%	1	0%
MVA - HIT SKIP	57	0%	9	0%	6	0%	5	0%	11	0%	8	0%	14	1%	4	0%
MVA - INJURY	17	0%	1	0%	4	0%	1	0%	2	0%	4	0%	1	0%	4	0%
MVA-PEDESTRIAN	4	0%	0	0%	3	0%	0	0%	0	0%	0	0%	1	0%	0	0%
MVA-PRIVATE PROPERTY	53	0%	6	0%	15	1%	2	0%	7	0%	6	0%	9	0%	8	0%
NEIGHBOR TROUBLE	59	0%	7	0%	8	0%	8	0%	12	0%	7	0%	9	0%	8	0%
NOISE COMPLAINT	449	2%	99	4%	52	2%	47	2%	39	2%	39	2%	67	2%	106	4%
NOTIFICATION	116	1%	10	0%	12	0%	15	1%	27	1%	17	1%	18	1%	17	1%
OFF DUTY DETAIL	169	1%	3	0%	34	1%	29	1%	25	1%	22	1%	26	1%	30	1%
ON THE AIR	5	0%	0	0%	0	0%	0	0%	3	0%	1	0%	1	0%	0	0%
OPEN BURNING	11	0%	2	0%	2	0%	1	0%	2	0%	0	0%	4	0%	0	0%
OPEN CONTAINER	2	0%	0	0%	0	0%	1	0%	0	0%	0	0%	1	0%	0	0%
OPEN DOOR	36	0%	6	0%	5	0%	8	0%	2	0%	3	0%	6	0%	6	0%
OUT OF THE VILLAGE	1	0%	0	0%	0	0%	0	0%	0	0%	1	0%	0	0%	0	0%
OVERDOSE	8	0%	1	0%	2	0%	1	0%	2	0%	1	0%	0	0%	1	0%
PARKING COMPLAINT	291	2%	49	2%	35	1%	39	2%	42	2%	50	2%	33	1%	43	2%
PARKING PERMISSION	706	4%	143	6%	96	4%	72	3%	89	3%	88	3%	92	3%	126	5%
PARKING VIOLATION	36	0%	5	0%	8	0%	3	0%	1	0%	8	0%	4	0%	7	0%
PHONE MESSAGE	219	1%	14	1%	29	1%	31	1%	35	1%	46	2%	33	1%	31	1%
PORTABLE	2	0%	0	0%	0	0%	1	0%	0	0%	0	0%	0	0%	1	0%

	Total	Sun	Mon	Tue	Wed	Thu	Fri	Sat
PREMISE CHECK	7 0%	1 0%	0 0%	2 0%	1 0%	0 0%	3 0%	0 0%
PRISONER PICK UP	25 0%	0 0%	6 0%	6 0%	3 0%	2 0%	2 0%	6 0%
PRISONER RELEASE	1 0%	0 0%	0 0%	1 0%	0 0%	0 0%	0 0%	0 0%
PRISONER TRANSPORT	9 0%	3 0%	1 0%	1 0%	1 0%	2 0%	1 0%	0 0%
PROPERTY - FOUND	61 0%	7 0%	6 0%	7 0%	15 1%	11 0%	7 0%	8 0%
PROPERTY - LOST	27 0%	1 0%	4 0%	4 0%	3 0%	9 0%	1 0%	5 0%
PROPERTY DAMAGE	24 0%	3 0%	3 0%	1 0%	6 0%	5 0%	4 0%	2 0%
PROTECTION ORDER VIOLA	6 0%	0 0%	1 0%	1 0%	1 0%	0 0%	3 0%	0 0%
PURSUIT	10 0%	0 0%	0 0%	1 0%	1 0%	1 0%	2 0%	5 0%
RECEIVE STOLEN PROPER	4 0%	0 0%	1 0%	1 0%	0 0%	2 0%	0 0%	0 0%
RECORD CHECKS	90 0%	1 0%	21 1%	22 1%	21 1%	10 0%	7 0%	8 0%
RECOVERED PROPERTY	4 0%	0 0%	1 0%	1 0%	0 0%	2 0%	0 0%	0 0%
RECOVERED STOLEN VEH	1 0%	0 0%	1 0%	0 0%	0 0%	0 0%	0 0%	0 0%
REGISTRATION CHECK	50 0%	0 0%	4 0%	12 0%	12 0%	13 1%	6 0%	3 0%
REPOSSESSION	183 1%	18 1%	13 0%	30 1%	41 2%	29 1%	25 1%	27 1%
ROAD CLOSED	6 0%	0 0%	0 0%	0 0%	1 0%	1 0%	3 0%	1 0%
ROAD HAZARD	36 0%	4 0%	6 0%	5 0%	8 0%	3 0%	7 0%	3 0%
ROBBERY	29 0%	7 0%	2 0%	4 0%	5 0%	5 0%	4 0%	2 0%
ROLL CALL	1 0%	0 0%	0 0%	0 0%	1 0%	0 0%	0 0%	0 0%
SCHOOL DETAIL	1 0%	0 0%	1 0%	0 0%	0 0%	0 0%	0 0%	0 0%
SEARCH WARRANT	5 0%	0 0%	1 0%	1 0%	0 0%	2 0%	1 0%	0 0%
SEX OFFENSE	9 0%	1 0%	0 0%	1 0%	1 0%	1 0%	5 0%	0 0%
SHIFT CALL IN	144 1%	19 1%	25 1%	23 1%	19 1%	18 1%	23 1%	17 1%
SHOPLIFTING	39 0%	3 0%	7 0%	5 0%	5 0%	7 0%	6 0%	6 0%

	Total		Sun		Mon		Tue		Wed		Thu		Fri		Sat	
SHOTS FIRED	56	0%	13	1%	7	0%	3	0%	7	0%	9	0%	7	0%	10	0%
SOLICITING	13	0%	4	0%	1	0%	2	0%	1	0%	1	0%	3	0%	1	0%
SPECIAL ATTENTION	215	1%	23	1%	35	1%	34	1%	31	1%	35	1%	28	1%	29	1%
SPECIAL ATTENTION CHEC	26	0%	0	0%	7	0%	6	0%	6	0%	2	0%	4	0%	1	0%
SQUAD CALL-1-GENERAL-B	913	5%	117	5%	143	5%	120	5%	146	6%	124	5%	135	5%	128	5%
SQUAD CALL-2-GENERAL-A	729	4%	111	5%	118	4%	84	3%	97	4%	95	4%	129	5%	95	4%
SQUAD CALL-3-LIFT ASSIST	65	0%	10	0%	9	0%	8	0%	9	0%	12	0%	6	0%	11	0%
SQUAD CALL-4-MUTUAL AI	6	0%	3	0%	1	0%	0	0%	0	0%	1	0%	1	0%	0	0%
SQUAD CALL-5-MVA	16	0%	2	0%	4	0%	1	0%	1	0%	1	0%	4	0%	3	0%
SQUAD CALL-6-FULL ARRE	6	0%	1	0%	0	0%	2	0%	0	0%	0	0%	2	0%	1	0%
STATION HOUSE REPORT	32	0%	0	0%	8	0%	4	0%	6	0%	5	0%	3	0%	6	0%
STOLEN VEHICLE	74	0%	11	0%	9	0%	8	0%	16	1%	12	0%	9	0%	9	0%
SUBPOENAS SERVED	1	0%	0	0%	0	0%	0	0%	0	0%	1	0%	0	0%	0	0%
SUICIDE/SUICIDAL	47	0%	4	0%	11	0%	8	0%	6	0%	5	0%	8	0%	5	0%
SUSPICION	727	4%	121	5%	99	4%	104	4%	105	4%	90	3%	111	4%	97	4%
THEFT-FREE TEXT	349	2%	38	2%	55	2%	51	2%	57	2%	60	2%	51	2%	37	1%
THREATS	120	1%	15	1%	18	1%	18	1%	22	1%	17	1%	16	1%	14	1%
TOW - RELEASE	34	0%	0	0%	11	0%	3	0%	4	0%	2	0%	11	0%	3	0%
TOW-AUTO TOW	48	0%	3	0%	8	0%	6	0%	10	0%	9	0%	9	0%	3	0%
TRAFFIC ALTERCATION	5	0%	1	0%	1	0%	1	0%	0	0%	1	0%	0	0%	1	0%
TRAFFIC COMPLAINT	109	1%	19	1%	18	1%	11	0%	9	0%	18	1%	18	1%	16	1%
TRAFFIC CONTROL DEVICE	8	0%	0	0%	1	0%	2	0%	2	0%	2	0%	1	0%	0	0%
TRAFFIC DETAIL	6	0%	0	0%	2	0%	1	0%	0	0%	3	0%	0	0%	0	0%
TRAFFIC STOP	1,036	6%	171	7%	111	4%	98	4%	123	5%	129	5%	161	6%	243	9%

	Total		Sun		Mon		Tue		Wed		Thu		Fri		Sat	
TRAINING	12	0%	1	0%	3	0%	2	0%	3	0%	1	0%	2	0%	0	0%
TRASH COMPLAINT	4	0%	2	0%	1	0%	0	0%	0	0%	0	0%	0	0%	1	0%
TREE DOWN	3	0%	0	0%	0	0%	1	0%	0	0%	1	0%	1	0%	0	0%
TRESPASSING	109	1%	19	1%	11	0%	13	1%	16	1%	20	1%	14	1%	16	1%
UNAUTHORIZED USE	18	0%	0	0%	5	0%	1	0%	4	0%	3	0%	4	0%	1	0%
UNRULY JUVENILE	87	0%	6	0%	20	1%	15	1%	13	1%	6	0%	10	0%	17	1%
UNWANTED GUEST	174	1%	29	1%	24	1%	30	1%	21	1%	26	1%	24	1%	20	1%
UTILITIES-PUBLIC	41	0%	4	0%	3	0%	6	0%	5	0%	7	0%	6	0%	10	0%
VANDALISM	42	0%	9	0%	8	0%	6	0%	5	0%	5	0%	6	0%	3	0%
VEHICLE MAINTENANCE/W	21	0%	1	0%	6	0%	3	0%	3	0%	1	0%	2	0%	5	0%
WARRANT SERVICE-ARRES	74	0%	14	1%	13	0%	12	0%	6	0%	12	0%	11	0%	6	0%
WELFARE CHECK	348	2%	55	2%	54	2%	49	2%	37	1%	53	2%	55	2%	45	2%

EUCLID POLICE DEPARTMENT

PERSONNEL

June 2015

POLICE OFFICERS

NUMBER OF PERSONNEL

Chief	1
Captain - Executive	0
Captains	4
Lieutenants	5
Sergeants	9
Uniform Police Officers	56
Police Officers Assigned to Plain Clothes	15
TOTAL REGULAR OFFICERS	90
Warrant Officers (part-time)	2

CIVILIAN PERSONNEL

Secretaries:	Chief of Police (part-time)	1
	Executive Officer	0
	Narcotics and Vice (part-time)	1
	Detective Bureau (full-time)	1
	Detective Bureau (part-time)	1
	Administrative Secretary (part-time)	0
Record Room / Communications :	Supervisor	0
	Record Room Clerks (full-time)	3
	Record Room Clerks (part-time)	2
Administrative Assistant		1
Administrative Assistant (part-time)		1
Computer Coordinator		0
Community Policing Specialist (part-time)		1
Community Policing Outreach Specialist (part-time)		1
Community Policing Education Specialist (part-time)		1
Evidence/Property Technician (part-time)		2
Animal Control:	Animal Control Officers	1
	Animal Control Officer (part-time)	0
	Kennelman (part-time)	0
	Secretary (full-time)	0
School Guards (part-time)		9
Custodian (part-time)		1

TOTAL CIVILIAN PERSONNEL

27

Euclid Juvenile Diversion Program

The Euclid Juvenile Diversion program is available for first time Euclid youth offenders that have committed a misdemeanor level offense in the city. If offered this option, the youth must admit to the offense and appear before our Euclid Juvenile Magistrate. If the orders of the court are satisfied, the charges are expunged from the youth's record. In some cases, we're hearing second offenses if they are still at the misdemeanor level and they are a different offense than the original.

Ongoing statistics can be requested from Kate McLaughlin, Euclid Community Policing Unit, 289-8449 or kmclaughlin@cityofeuclid.com.

June, 2015	<i>This chart is a snapshot of activity relating to cases received.</i>
8	Number of first-time offenders referred to the Euclid Juvenile Diversion Program
3	Number of youth admitted into the program
0	Number of youth sent to Cuyahoga County Juvenile Court
5	Number of pending cases as of this reporting date
0	Number of no shows at court
3	Number of youth scheduled for court next month

