




EUCLIDPD.ORG

 Facebook @Euclid Police Department

 Twitter @EuclidPD

 Instagram @euclidpolice

EUCLID POLICE

545 East 222 Street

216-731-1234

Patrol

The Patrol Division is the largest division in the police department, consisting of one captain, three lieutenants, six sergeants and approximately 50 patrol officers who provide twenty-four hour police service to the community. Patrol is the most visible of all police activities, and it is at the heart of what we do as police officers.

The Division is tasked to actively patrol the city. On a daily basis the patrol officer's duties include preventing crime, responding to calls for service, resolving disputes, taking incident and accident reports, collecting crime evidence, conducting traffic enforcement and arresting those suspected of criminal activities.

Patrol officers are normally the first responders to all types of incidents, and they must contend with constantly changing situations, as routine calls can sometimes turn dangerous quickly. They are highly trained and tasked to rapidly assess situations by taking appropriate action. They are entrusted to protect the public and be vigilant to dangers which could affect those they serve.

"We will continue to work hard at building relationships throughout the community. It is through engaging our residents, and businesses that we are able to best serve our community and ultimately provide more effective police services."

- Chief Scott Meyer

Detective Bureau

The Detective Bureau, which is the criminal investigation division of the police department, assists the Patrol Division by investigating and possibly identifying those that are responsible for a criminal incident and following up with criminal charges. Besides identifying those who committed the crime, steps are taken to recover property that may have been stolen from the victim.

The Detective Bureau is staffed by one lieutenant, one sergeant, and approximately 10 detectives. One detective is assigned to the juvenile unit, one to the warrant unit, and one to the Cuyahoga County Fugitive Task Force. Eight detectives investigate and coordinate the prosecution efforts between the Euclid Police and the Cuyahoga County Prosecutor's Office. These efforts require the detectives to spend time in the County Common Pleas Court, presenting criminal cases along with required evidence and officer testimony.

Narcotics & Vice

The Narcotics & Vice Unit is staffed with four sworn, experienced, and highly motivated investigators and one of these investigators is assigned full-time to the D.E.A. Task Force. The unit investigates drug-related crimes which lead to both short and long-term investigations. All illegally possessed drugs and firearms seized by officers are processed through this unit. Narcotics Detectives serve drug related warrants on cases specific to Euclid and other jurisdictions.



Statue of Euclid Police Officer and Child



Euclid Police New Patrol Vehicle

School Resource Officer

The Euclid Police Department strives to maintain a high level of visibility in the Euclid school community. Officer Erica Rodriguez serves as the School Resource Officer at Euclid High School where she maintains an office and has an open-door policy for all students and staff. Officer Rodriguez is assigned to provide law enforcement services to Euclid High School as well as other classroom programs. Officer Rodriguez will also be seen attending after school activities such as dances and sporting events.

EDGE SWAT

In early 2014, Euclid Police SWAT became integrated in the Eastside Departments Group Enforcement regional SWAT team. This group of specially trained and assembled police officers from member jurisdiction cities can be requested for deployment to critical incidents where special weapons, tactics and communications are needed.

The purpose and intent of EDGE SWAT is to serve as a specialized, flexible and mobile team, activated to assist member jurisdiction departments in addressing and resolving critical incidents outside of normal police operations. EDGE SWAT police departments include Beachwood, Euclid, Shaker Heights, South Euclid, University Heights and Cleveland Heights.

EDGE Mobile Field Force

Designed to provide rapid, organized and disciplined responses to civil disorder and crowd control, the MFF is a platoon of officers from multiple agencies including Euclid Police that uses small squad tactics developed by the Office of Domestic Preparedness to de-escalate critical situations. Team members attend regular trainings, and focus on field force and crowd control tactics, but also firearm drills, rescues, first aid and extrication tactics.



1924 Euclid Police Purchase the First Patrol Car

Traffic

The primary objective of the Traffic Division is to achieve the safe and efficient movement of traffic. "Traffic" includes the movement of automobiles, motorcycles, commercial vehicles, bicycles, and pedestrians. Our objective is achieved through education of the public, traffic engineering, and enforcement.

Traffic enforcement is the responsibility of every police officer. All police officers have been trained to recognize traffic hazards and actions performed by the motoring public which endanger themselves and others. All police officers are empowered to take action in those situations. The Traffic Division, however, is focused specifically on addressing traffic problems throughout the City of Euclid.

One of the main duties of the Traffic Division is selective enforcement, which is defined as the precise placement of officers enforcing specific regulations for the express purpose of preventing serious injuries due to motor vehicle crashes. Violations and their locations are obtained from crash statistics.



Officer George Brentar Memorial Garden

Community Policing Unit

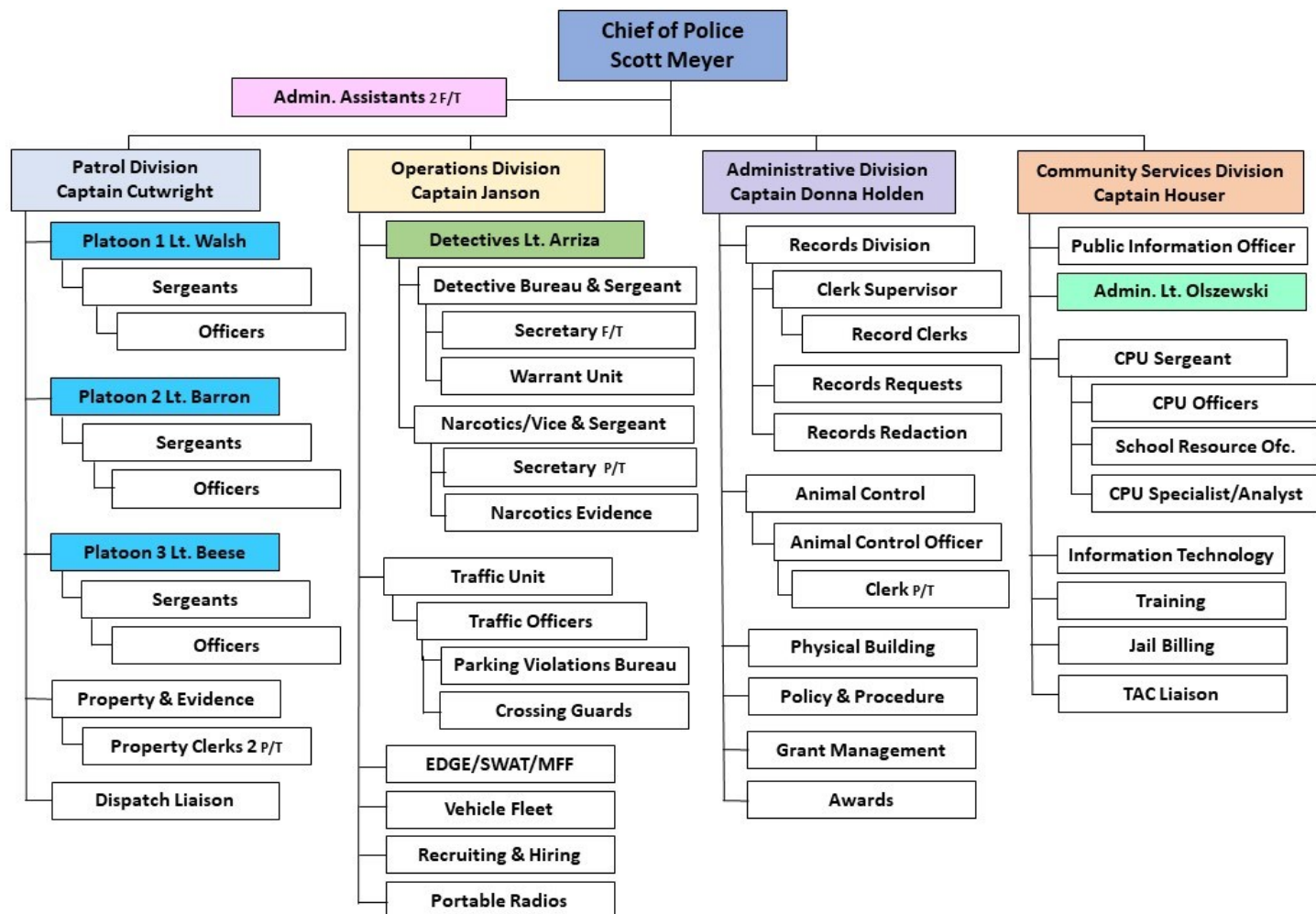
CPU fosters a spirit of cooperation between police and the community by helping to remove communication barriers between citizens and officers in order to establish mutual understanding and respect. Together we strive to form a more peaceful, caring and vital community built on shared respect by cultivating relationships with our neighbors through similar interests. To achieve these ideals, CPU is responsible for developing and implementing several specialized programs and events which promote safety, crime prevention, and outreach aimed at unification of citizens and officers for the sustainment of a more thriving community.

Community Response Unit

CRU focuses a team of officers to address specific problems in targeted hotspots for issues primarily related to illegal firearms and narcotics possession. CRU is not assigned to radio calls but saturates areas in the community that are known for high levels of criminal activity, CRU officers possess a strong work ethic, a smart and proactive policing style, good people skills and flexibility and adaptability. Duties include uniformed and plain clothes details that assist narcotics and the detective bureaus to develop felony cases, address juvenile concerns, and other quality of life issues.

Crime Prevention

EPD's mission is to deliver services that give our residents a feeling of safety and security. The crime prevention philosophy is to remove the opportunity for crime to occur in residences, businesses and in neighborhoods. The more awareness we place in front of our residents, the more we equip ourselves to protect our community. Through sharing of information and training we can help Euclid residents identify and implement strategies that reduce factors for future crimes.



Contact	Number	Email
Patrol Division Capt. Jeff Cutwright	216-289-2711	jcutwright@cityofeuclid.com
Operations Division Capt. Mike Janson	216-289-8431	mjanson@cityofeuclid.com
Community Services Capt. Mitch Houser	216-289-8464	mhouser@cityofeuclid.com
Community Policing Sgt. Shon Williams	216-289-8526	vwilliams@euclidpd.org
Crime Prevention/Crime Analysis Kate McLaughlin	216-289-8449	kmclaughlin@cityofeuclid.com
Police Headquarters	216-731-1234	info@euclidpd.org

